

bizcare

ISSUE 7 . 2025 / 2026



HOW TO BUILD YOUR TEAMS NEW LOOK

First impressions count, especially when your business is service based. A good-looking uniform not only elevates your brand amongst your competitors but also fosters increased morale and productivity among your staff.

Our catalogue is designed to make building your team's new uniform easy in 4 simple steps.



BEFORE

1

**IDENTIFY DEPARTMENTS
AND/OR JOB ROLES
REQUIRING UNIFORM**

Colour-coding apparel for different departments can be helpful markers for your clientele. Refer to pages 4 - 11 for a snapshot of team dressing by colour story.

2

**PICK STYLES AND FABRICS
BASED ON JOB ROLES
AND FUNCTIONS**

Our entire range is designed to cater for both functional and non-functional roles. Available in a range of fabrics and styles to suit all budgets, body shapes and climates.

3

**ALLOCATE ENOUGH
PIECES FOR EACH OF
YOUR TEAM**

Providing the right allocation ensures staff have enough pieces to last them through their working week and increases the longevity of garments.

4

**READY TO
ORDER?**

Get in touch with our uniform specialists who can review your requirements and suggest the perfect uniform solution for your team. Find your local Biz Care stockist at www.biz-care.com

AFTER



A STEP IN THE RIGHT DIRECTION

We're committed to designing and manufacturing ethical and sustainable healthcare attire. At the core of our business is a long-standing commitment to ethical trading. We believe that businesses can be both profitable and responsible.

At Biz Care, we like to think of ourselves as masters of the tiniest details. From sourcing fabrics, to ensuring all our health wear designs are rigorously tested in dedicated laboratories and trialled on real workers to make sure we get the fit and functionality just right.

Biz Care garments have been designed to easily coordinate with the Biz Collection range to ensure everything works perfectly together providing a complete uniform solution.



INNOVATIVE QUALITY IS AT THE HEART OF ALL WE DO

Our experienced team of designers, researchers and technicians are dedicated to sourcing innovative fabrics and processes. Before we release any new product, we perform rigorous testing and evaluation, both in-house and in the workplace. Our garments are fitted on real people, not mannequins, and we conduct wear trials with customers in the field to guarantee they're fit for purpose, comfort and durability.



MORE CHOICES FOR EVERY BODY

We're the first to recognise that one size doesn't fit all, that's why we offer a vast range of styles, sizes and fabrics to suit all body shapes, industries and functional needs. We've created products that can be mixed and matched, catering for different work streams, job roles and also allowing each wearer to feel comfortable in their workwear.



DELIVERING ON OUR PROMISE OF CARE

With a team of local staff in most states and at the ready to take your call, customer service is a natural extension of everything we do. Our library of fit ranges in some states is available to help you effortlessly conduct fittings and borrow samples easily and efficiently.

Because we hold stock in multiple warehouses across Australia and New Zealand, we can ensure your orders are processed, picked and dispatched quickly and efficiently.



WE BELIEVE IN CORPORATE SOCIAL RESPONSIBILITY

We're proud of our parent company Fashion Biz's commitment to sourcing products and services in an ethically responsible manner. We consider the welfare of workers, health and safety and potential environmental impacts.

Our Ethical Sourcing Policy is primarily based on conducting business ethically, manufacturing responsibly and demonstrating environmental consciousness. We choose our partners carefully, with factories across India, China and Bangladesh which must adhere to international manufacturing standards, these may include:



Ethical Trade Initiative Base Code (ETI)



Supplier Ethical Data Exchange (Sedex) ETI/SMETA



Ethically Correct Certified Company SA 8000



Worldwide Responsible Accredited Production (WRAP)



Business Social Compliance Initiative (BSCI)



Textile Exchange's Global Recycled Standard (GRS)



Quality Approved ISO 9001

ISO 9001 Certification



Fashion Biz Ethical Sourcing Policy

We're making it a priority to change our product life cycle for the better. That means growing a better future for both our customers and the planet.

04. TEAM DRESSING

12. INDUSTRIES

24. SHIRTS, T-TOPS & POLOS

34. FUNCTIONAL LOWERS

42. CARE SCRUBS

60. LAB COATS

62. ACCESSORIES

66. HEALTH & BEAUTY

70. KNITWEAR & OUTERWEAR

TEAM DRESSING

INDUSTRIES

SHIRTS, T-TOPS & POLOS

FUNCTIONAL LOWERS

CARE SCRUBS

LAB COATS

ACCESSORIES

HEALTH & BEAUTY

KNITWEAR & OUTERWEAR

NAVY

Navy is a staple colour in any health wardrobe. Best worn with black or navy lowers.



FEATURED - LEFT TO RIGHT 1. S770MS Monaco Shirt, CL959ML Cargo Pant 2. CST243LS Rose Scrub Top, CSP244LL Rose Maternity Scrub Pant

3. CS949LS Florence Tunic, CL956LS Cargo Skirt 4. CST043LS Riley Stretch Scrub Top, CSP042LL Riley Jogger Scrub Pant

5. CST141MS Tokyo Scrub Top, CSP143ML Tokyo Scrub Pant 6. CST240LS Parks Scrub Top, CT247LL Performance Tee, CSP042LL Riley Jogger Scrub Pant, CH248L Hijab

MID BLUE

Match with black, navy or charcoal lowers and outerwear.
For depth, add a secondary colour palette of white, electric blue or navy.



FEATURED - LEFT TO RIGHT 1. **SH3603** Oasis Shirt, **CL959ML** Cargo Pant 2. **CS951LT** Florence 3/4 Shirt, **CK045LC** Cardigan, **CL956LS** Cargo Skirt
3. **CS947LS** Florence Shirt, **CL040LL** Jane 3/4 Pant 4. **H10622** Classic Biz Scrub Top, **CT247LL** Performance Tee, **H10620** Classic Biz Scrub Bootleg Pant, **CH248L** Hijab
5. **H10612** Classic Biz Scrub Top, **H10610** Classic Biz Scrub Cargo Pant 6. **CS952LS** Marley T-Top, **CL041LL** Jane Pant 7. **CS949LS** Florence Tunic, **CL955LL** Straight Leg Pant

PURPLE

Modern and eye-catching, our purple adds richness and depth to your wardrobe without being overly vivid. Try pairing with navy, charcoal, black or white.



FEATURED - LEFT TO RIGHT 1. **CS950LS** Daisy Print Florence Tunic, **CL040LL** Jane 3/4 Pant
2. **CS947LS** Florence Shirt, **CL956LS** Cargo Skirt 3. **CST043MS** Riley Scrub Top, **CSP047ML** Riley Straight Leg Scrub Pant
4. **CST043LS** Riley Scrub Top, **CSP047LL** Riley Straight Leg Scrub Pant 5. **CS952LS** Marley T-Top, **CL955LL** Straight Leg Pant

TEAL

Teal matches well with navy, black or charcoal in both lowers and outerwear.



FEATURED - LEFT TO RIGHT 1. SH3603 Oasis Shirt, CL958ML Flat Front Pant 2. CK962LC Zip Knit, CS948LS Daisy Print Florence Shirt, CL954LL Cargo Pant
3. CS950LS Daisy Print Florence Tunic, CL953LL Slim Leg Pant 4. P400LS Crew Polo, CL956LS Cargo Skirt
5. CS952LS Marley T-Top, CL955LL Straight Leg Pant 6. CST945MS Avery V-Neck Scrub Top, CSP946ML Avery Scrub Pant

TEAM
DRESSING

INDUSTRIES

SHIRTS, T-TOPS
& POLOS

FUNCTIONAL
LOWERS

CARE SCRUBS

LAB COATS

ACCESSORIES

HEALTH
& BEAUTY

KNITWEAR
& OUTERWEAR

CHARCOAL

A colour that will go with everything in your wardrobe and complement any skin tone. Add depth to charcoal with contrasting colours of blue, purple or white.



FEATURED - LEFT TO RIGHT 1. **CS952LS** Marley T-Top, **CL953LL** Slim Leg Pant 2. **P400LS** Crew Polo, **CL953LL** Slim Leg Pant
3. **CST945MS** Avery V-Neck Scrub Top, **CSP946ML** Avery Scrub Pant 4. **CST941LS** Avery V-Neck Scrub Top, **CSP944LL** Avery Straight Leg Scrub Pant
5. **CST141MS** Tokyo Scrub Top, **CSP143ML** Tokyo Scrub Pant 6. **CST141LS** Tokyo Scrub Top, **CSP143LL** Tokyo Scrub Pant

ELECTRIC BLUE

Give your wardrobe a recharge with electric blue.
Pair with navy, charcoal or black for a striking look.

TEAM
DRESSING

INDUSTRIES

SHIRTS, T-TOPS
& POLOS

FUNCTIONAL
LOWERS

CARE SCRUBS

LAB COATS

ACCESSORIES

HEALTH
& BEAUTY

KNITWEAR
& OUTERWEAR



FEATURED - LEFT TO RIGHT 1. **CS952LS** Marley T-Top, **CL956LS** Cargo Skirt 2. **CS949LS** Florence Tunic, **CL953LL** Slim Leg Pant
3. **CK961LV** Knit Vest, **CS947LS** Florence Shirt, **CL953LL** Slim Leg Pant 4. **CST141LS** Tokyo Scrub Top, **CSP143LL** Tokyo Scrub Pant
5. **CST945MS** Avery V-Neck Scrub Top, **CT247ML** Performance Tee, **CSP946ML** Avery Scrub Pant 6. **CST942LS** Avery Round Neck Scrub Top,
CSP944LL Avery Straight Leg Scrub Pant 7. **CST043LS** Riley Scrub Top, **CSP042LL** Riley Jogger Scrub Pant

CHERRY

Match with black or navy lowers and outerwear.

For depth, add a secondary colour palette of white, blue or black.



FEATURED - LEFT TO RIGHT 1. P400LS Crew Polo, CL957LS Cargo Short

2. P400MS Crew Polo, CL960MS Cargo Short 3. CS949LS Florence Tunic, CL954LL Cargo Pant 4. CS951LT Florence Shirt, CL953LL Slim Leg Pant

5. CS947LS Florence Shirt CL955LL Straight Leg Pant 6. CS952LS Marley T-Top, CL954LL Comfort Waist Cargo Pant

BLACK

Black is a staple in any working wardrobe. Biz Care blacks have been tested to ensure that colorfastness is the least of your worries.



FEATURED - LEFT TO RIGHT 1. **CST942LS** Avery Round Neck Scrub Top, **CSP943LL** Avery Slim Leg Scrub Pant
2. **CST043LS** Riley Scrub Top, **CSP042LL** Riley Jogger Scrub Pant 3. **CS952LS** Marley T-Top, **CL956LS** Cargo Skirt 4. **P400MS** Crew Polo, **CL959ML** Cargo Pant
5. **CS949LS** Florence Tunic **CL041LL** Jane Pant 6. **CST243LS** Rose Scrub Top, **CSP042LL** Riley Jogger Scrub Pant



BIZ CARE CARES FOR ALL

It is no secret that the healthcare industry is booming. Biz Care understands that the healthcare industry is made up of more than just public and private hospitals. As such, we offer a comprehensive range of attire to suit an array of CARE industries as well as supporting related services.

The Biz Care healthwear range is designed to extend into various work streams and job roles within any sized clinic or practice.

- Medical Clinics & Dental Services
- Optometry
- Physiotherapy
- Chiropractic
- Aged Care, Out-Patient & Remedial Services
- Pharmaceutical
- Research Labs
- Medical Schools
- Veterinary
- Beauty Therapists & Clinics
- Cosmeceutical Industry
- Transport Services
- Early Learning Centres
- Pathology & Diagnostic Imaging Services
- Hygiene, Cleaning & Housekeeping Services
- And so much more...



WHY CHOOSE BIZ CARE?

At Biz Care, we like to think of ourselves as masters of the finest details. Our healthwear is rigorously tested in our own dedicated laboratories and we trial our designs on real health workers to ensure they are fit for purpose.

By combining on-trend design, comfort and performance, we're proud to produce apparel that suits everybody in every industry by offering a range of contemporary styles, colours and silhouettes to match.



INTER-BRAND COMPATIBILITY

Biz Care has been designed to coordinate easily with key styles and colours from the Biz Collection range.



LOCAL EXPERTS

Our team of dedicated in-house experts work together across our Auckland and Melbourne offices. Biz Care make products that are suitable for all body shapes and sizes with materials that cater for our local climates and job functions.



SAY NO TO FAST FASHION

We create considered ranges that are always on-trend and last well beyond typically seasonal trends. Our ranges are active and stocked for a minimum of 3 - 5 years, which is better for you and the environment.



SHOP LOCAL / SUPPORT LOCAL

Biz Care is proudly sold through a network of over 4000 locally owned and operated businesses, supporting thousands of employees across Australia and New Zealand.

TRANSPORT

Having a uniform is proven to help your business thrive. Not only does it help employee engagement, which has a positive impact on customer engagement, but it also allows customers to spot employees and actively ask for assistance. Which is key for outstanding customer service!



FEATURED - LEFT TO RIGHT 1. J404L Geneva Vest, CS947LS Florence Plain S/S Shirt
2. P400MS Crew S/S Polo, CL960MS Comfort Waist Cargo Short, S770LS Monaco S/S Shirt, CL145LS Comfort Waist Skort **3. J307M Geneva Jacket, S770MS Monaco S/S Shirt**



HYGIENE SERVICES



A consistent apparel policy gives your business professionalism, security and credibility. Specifying uniform will also allow for easy identification and differentiation of job roles.

FEATURED - LEFT TO RIGHT 1. **P105LS** City Polo 2. **CS947LS** Florence Plain S/S Shirt, **CL145LS** Comfort Waist Skort 3. **CS952LS** Marley S/S Jersey Top

TEAM DRESSING

INDUSTRIES

SHIRTS, T-TOPS & POLOS

FUNCTIONAL LOWERS

CARE SCRUBS

LAB COATS

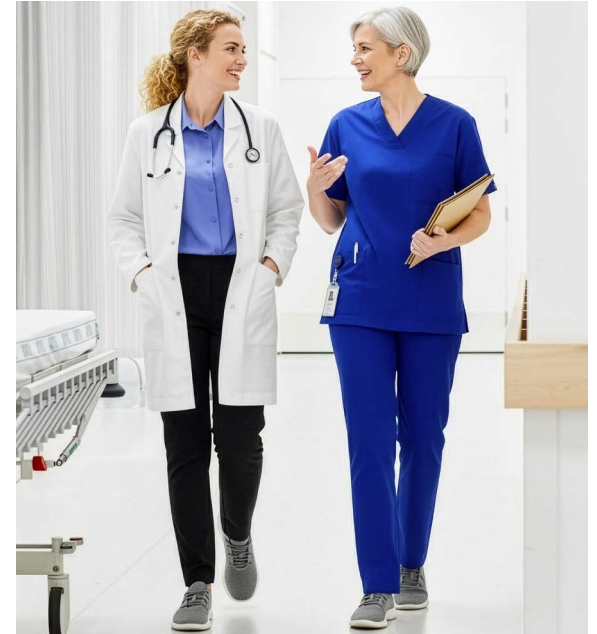
ACCESSORIES

HEALTH & BEAUTY

KNITWEAR & OUTERWEAR



MEDICAL

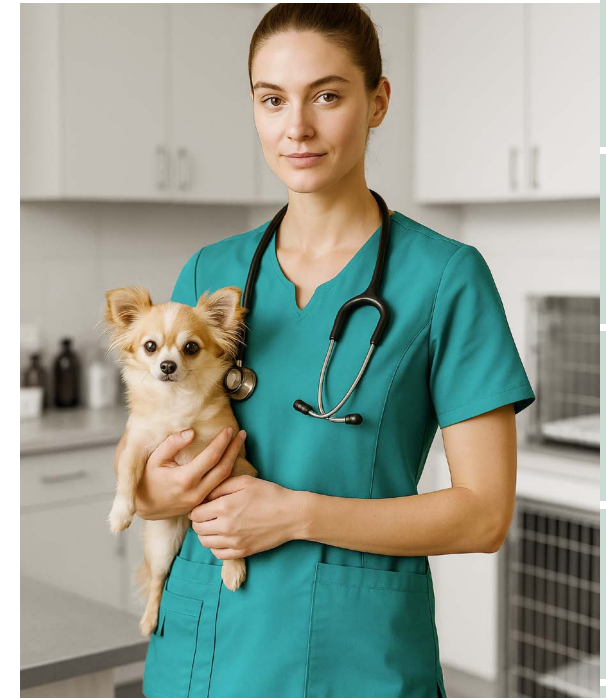


Colour-coding apparel for different departments can be helpful markers for patients. You may have doctors in a certain colour, with nurses and attendees in contrasting colours. Reception and Admin staff who are not in a medical role should be in professional, branded corporate attire.

FEATURED - LEFT TO RIGHT 1. **CST150US** Hartwell Reversible Scrub Top
2. **CST043LS** Riley Stretch Scrub Top 3. **H132ML** Classic Lab Coat,
CS951LT Florence Plain 3/4 Sleeve Shirt, **CL041LL** Jane Stretch Pant,
CST150US Hartwell Reversible Scrub Top, **CSP151UL** Hartwell Reversible Scrub Pant

VETERINARY

A key part of running a Veterinary Clinic is creating a brand your clients can identify and connect with - and preferably, one that's dependable and professional.



FEATURED - LEFT TO RIGHT **CST941LS** Avery V-Neck Scrub Top, **CSP944LL** Avery Straight Leg Scrub Pant **2.** **CST945MS** Avery V-Neck Scrub Top, **CSP946ML** Avery Straight Leg Scrub Pant, **CK962LC** Zip Front S/S Knit Cardigan, **CS952LS** Marley S/S Jersey Top, **CL956LS** Comfort Waist Cargo Skirt **3.** **CST942LS** Avery Round V-Neck Scrub Top

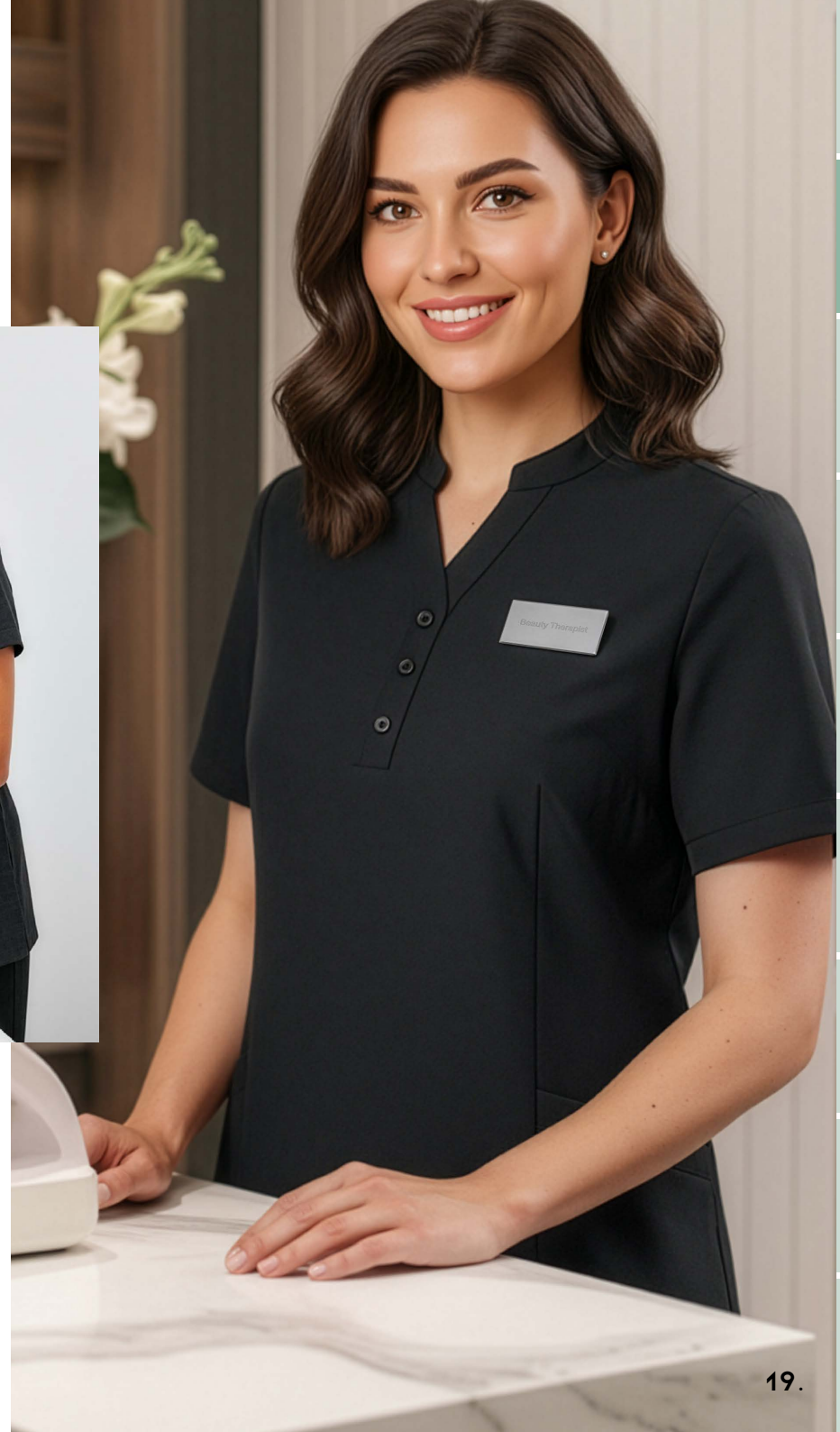
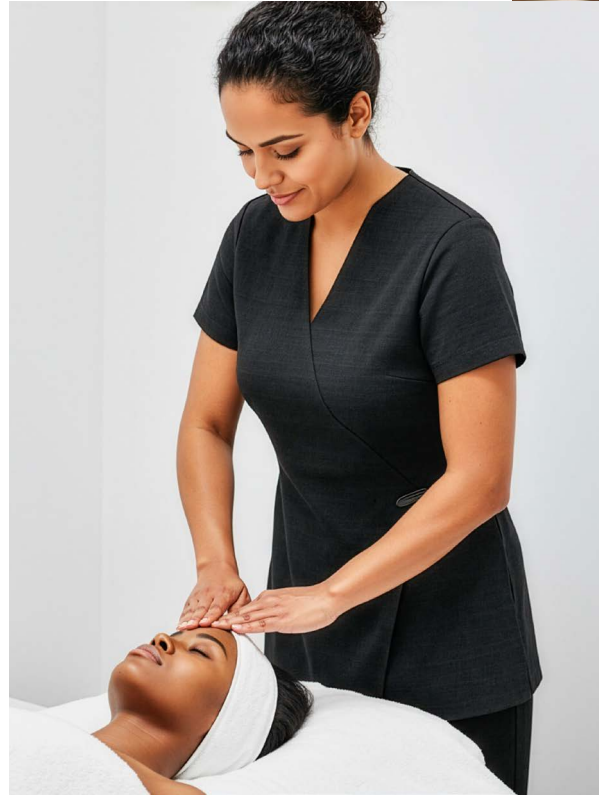
EARLY LEARNING

A consistent apparel policy gives your Child Care Centre professionalism and credibility, as well as a unique brand identity that differentiates your business from the competition.



FEATURED - LEFT TO RIGHT 1. CS950LS Florence Daisy Print Tunic
2. CS952LS Marley S/S Jersey Top, CSP042LL Riley Slim Leg Jogger Scrub Pant
3. CS450LS Florence Stardust Print Tunic

BEAUTY & WELLNESS



Elevate your wellness and beauty establishment with uniforms crafted from easy-to-maintain fabrics, embodying both style and practicality for a sophisticated look.

FEATURED - LEFT TO RIGHT 1. H134LS Zen Tunic 2. H630L Spa Tunic
3. CS949LS Florence Plain Tunic

TEAM
DRESSING

INDUSTRIES

SHIRTS, TTOPS
& POLOS

FUNCTIONAL
LOWERS

CARE SCRUBS

LAB COATS

ACCESSORIES

HEALTH
& BEAUTY

KNITWEAR
& OUTERWEAR

PHARMACEUTICAL

Maintaining a uniform apparel standard enhances your pharmacy's professionalism and sets it apart with a unique brand identity, while Biz Care quality apparel ensures confidence in any retail or clinical setting.



FEATURED - LEFT TO RIGHT 1. CPT451LS Essence Jacket
2. S770MS Monaco S/S Shirt **3. CS949LS** Florence Plain Tunic



DENTAL SERVICES



A vital aspect of managing a Dental Clinic is establishing a brand that fosters connection and approachability for your clients, alongside being dependable and professional.

FEATURED - LEFT TO RIGHT 1. CPT451MS Essense Jacket
2. H133LS Eden Tunic 3. CST945MS Avery V-Neck Scrub Top,
CSP946ML Avery Scrub Pant

FLORENCE STRETCH TOPS



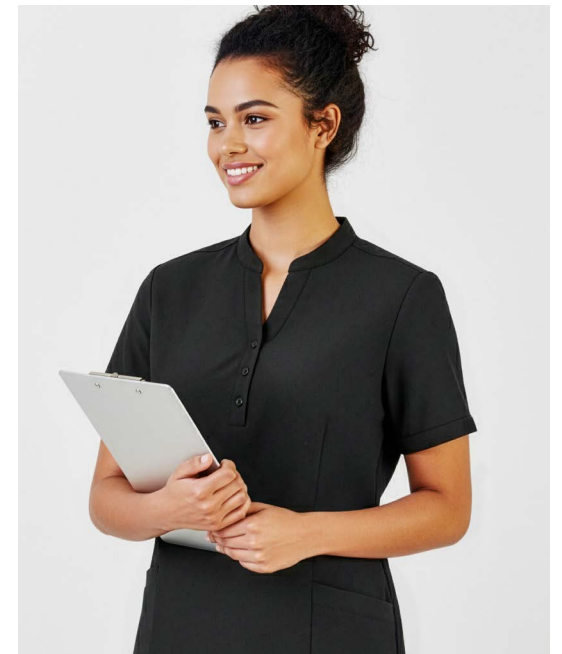
LIGHT
WEIGHT

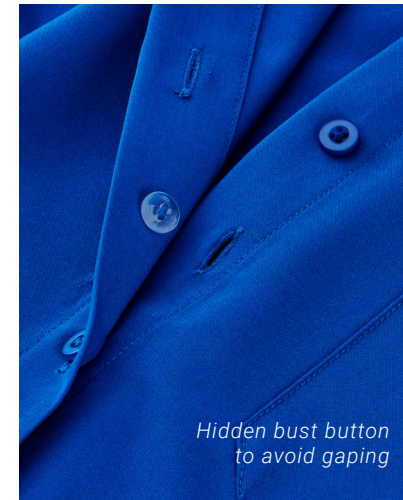


EASY
STRETCH



BREATHABLE





- NAVY
- ELECTRIC BLUE
- MID BLUE
- TEAL
- CHERRY
- CHARCOAL
- BLACK
- PURPLE

A perfect blend of style, comfort and function. The easy-care fabric is breathable, soft and lightweight; perfect for all climates. Styles feature longer hem lengths, hidden bust button (short sleeve and ¾ sleeve styles), side splits and pockets.

FABRIC COMPOSITION
CARE INSTRUCTIONS

94% Polyester 6% Elastane
Gentle machine wash. Wash inside out with similar colours.
Do not bleach, soak or tumble dry. Line dry in shade.



CS947LS
Womens
S/S Shirt
4 - 30



CS949LS
Womens
Tunic
4 - 30



CS951LT
Womens
3/4 Shirt
4 - 30

FLORENCE DAISY PRINT STRETCH TOPS



LIGHT
WEIGHT



EASY
STRETCH



BREATHABLE



A perfect blend of style, comfort and function. The easy-care fabric is breathable, soft and lightweight; perfect for all climates. Styles feature longer hem lengths, hidden bust button on short sleeve style, side splits and pockets.

FABRIC COMPOSITION CARE INSTRUCTIONS

94% Polyester 6% Elastane
Gentle machine wash. Wash inside out with similar colours.
Do not bleach, soak or tumble dry. Line dry in shade.



CS948LS
Womens Daisy
Print S/S Shirt
4 - 30



CS950LS
Womens Daisy
Print Tunic
4 - 30

FLORENCE STARDUST PRINT STRETCH TUNIC



LIGHT
WEIGHT



EASY
STRETCH



BREATHABLE



A perfect blend of style, comfort and function. The easy-care fabric is breathable, soft and lightweight; perfect for all climates. Features longer hem length, side splits and pockets.

FABRIC COMPOSITION CARE INSTRUCTIONS

94% Polyester 6% Elastane

Warm machine wash. Wash garment inside out with like colours.

Do not bleach, soak, wring or tumble dry. Cool iron using press cloth.



CS450LS
Womens
Tunic
4 - 30

MARLEY JERSEY T-TOPS



LIGHT
WEIGHT



EASY
STRETCH



BREATHABLE



Our easy-care Jersey T-Top is an essential piece in any working wardrobe. The lightweight soft knit provides stretch and comfort without clinging to the body. Designed to complement all silhouettes.

FABRIC COMPOSITION CARE INSTRUCTIONS

95% Polyester 5% Elastane

Warm gentle machine wash. Wash with similar colours. Do not bleach, soak or tumble dry. Line dry in shade. Little to no pressing required.



CS952LS
Womens
S/S T-Top
XXS - 4XL



PERFORMANCE TEE

The perfect tee that can be worn as an underscrub or on its own. Made from soft cotton treated with SILVERPLUS® antibacterial protection. Added stretch allows for extra movement and comfort. Designed to sit closer to the body.

FABRIC COMPOSITION

95% Cotton 5% Elastane with antibacterial and odour protection.

CARE INSTRUCTIONS

Machine wash cold, inside out with like colours on gentle cycle. Dry in shade, cool iron if required.



CT247LL
Womens
Cotton L/S Tee
XS - 3XL



CT247ML
Mens
Cotton L/S Tee
XS - 5XL

MIDNIGHT NAVY

BLACK

WHITE



LIGHT WEIGHT



EASY STRETCH



BREATHABLE



ANTI BACTERIAL

TEAM DRESSING

INDUSTRIES

SHIRTS, T-TOPS & POLOS

FUNCTIONAL LOWERS

CARE SCRUBS

LAB COATS

ACCESSORIES

HEALTH & BEAUTY

KNITWEAR & OUTERWEAR

BIZ COLLECTION

OASIS SHIRTS



LIGHT WEIGHT



WRINKLE RESISTANT



Biz Collection Oasis is ideal for demanding work environments. It's soft, durable and requires little to no ironing. Made from yarn-wicked breathable polyester, providing the same cool and dry features of linen.

FABRIC COMPOSITION
CARE INSTRUCTIONS

BIZ COMFORTCOOL™ 100% Polyester
Cold gentle machine wash. Do not bleach, soak or tumble dry. Line dry in shade.



LB3601
Womens
S/S Shirt
6 - 26



S265LS*
Womens
Overblouse
6 - 30



LB3600
Womens
3/4 Shirt
6 - 26



SH3603*
Mens
S/S Shirt
S - 3XL, 5XL

*Limited colours available. See the full range of styles and colours available in the Biz Collection catalogue.

BIZ COLLECTION

MONACO SHIRTS



BREATHABLE



EASY STRETCH



- INK
- ELECTRIC BLUE
- PLATINUM
- BLACK
- WHITE

Get that pristine look with this stretch cotton-rich fabric alternative. The Biz Collection Monaco is a functional and comfortable shirt range for demanding healthcare environments.

FABRIC COMPOSITION
CARE INSTRUCTIONS

68% Cotton 28% Polyester 4% Elastane
Cold gentle machine wash. Do not bleach, soak or tumble dry. Line dry in shade.



S770LS
Womens
S/S Shirt
6 - 26



S770LT
Womens
3/4 Shirt
6 - 26



S770MS
Mens
S/S Shirt
XS - 5XL

See the full range of styles and colours available in the Biz Collection catalogue.

BIZ COLLECTION

CARE POLOS RANGE

Our range of Biz Collection polos are easy-care, come in a wide selection of colours, and are perfect for all healthcare professionals.





FEATURED 1. P313LS Focus Polo 2. P400MS Crew Polo 3. P206LS Action Polo 4. P900MS Galaxy Polo 5. P405LS Razor Polo 6. P419MS Dart Polo

BIZ CARE FUNCTIONAL LOWERS

Designed and developed for Care professionals, the Biz Care Functional Lowers range is comfortable, breathable and durable.



BREATHABLE



EASY
STRETCH

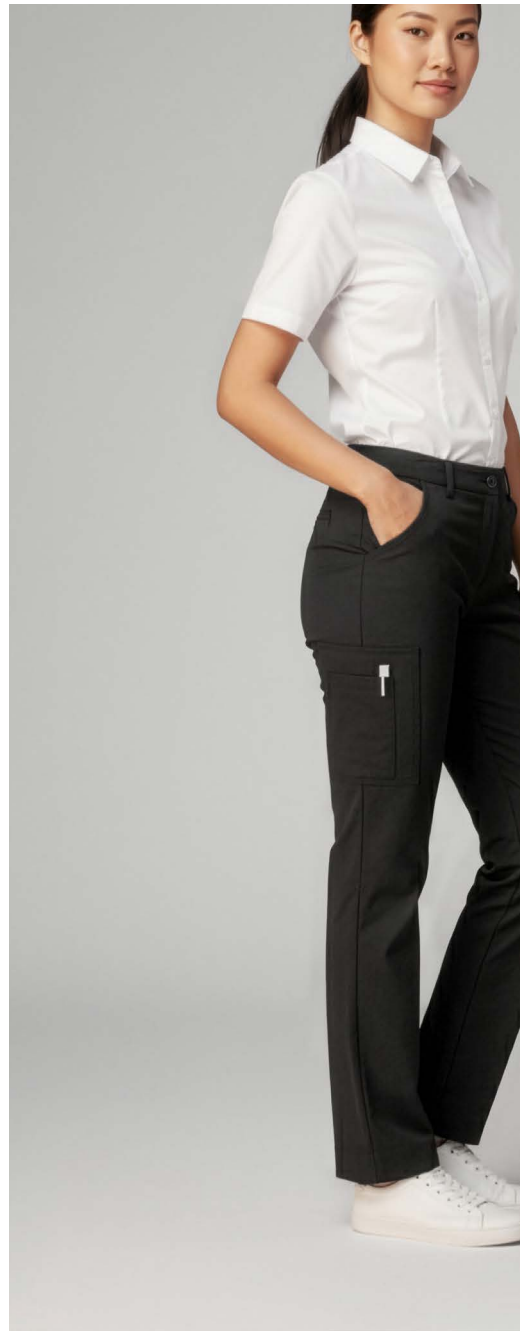


LIGHT
WEIGHT



CLEVER
STORAGE





Biz Care Functional Lowers are designed, developed, fitted and tested in Australia and New Zealand by real Care professionals to ensure our range is comfortable, stylish and fit for purpose.

FUNCTIONAL LOWERS FEATURES:

- Multiple functional and durable pockets.
- Pockets made from self-fabric to withstand sharp tools, and bar tacked to prevent pocket corners ripping.
- Streamlined pockets provide a clean and tailored appearance, and are less like industrial workwear pockets (cargo pant only).
- Roll-up pant leg option provide the flexibility of a 3/4 leg length (cargo pant only).
- Durable, hard-wearing soft fabric with added stretch for comfort and movement.
- Comfort stretch waistband that moves with you.



CL953LL Womens Comfort Waist Slim Leg Pant



CL955LL Womens Comfort Waist Straight Leg Pant



CL954LL Womens Comfort Waist Cargo Pant

Roll up feature

WOMENS COMFORT LOWERS

Breathable, durable, and easy-care fabric. Made from a lightweight plain weave with added stretch for comfort. Comfort lower pants, shorts and skirt have a built in comfort stretch waist band, making it perfect for all functional and admin roles.

FABRIC COMPOSITION CARE INSTRUCTIONS

64% Polyester 34% Viscose 2% Elastane
Warm gentle machine wash 40°. Wash inside out with similar colours.
Do not bleach, soak or tumble dry. Line dry in shade.
Cool iron if required.



CL956LS Womens Comfort Waist Cargo Skirt



CL957LS Womens Comfort Waist Cargo Short



CL145LS Womens Comfort Skort



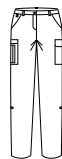
Hidden short



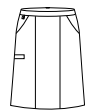
CL953LL
Womens
Slim Leg Pant
4 - 20



CL955LL
Womens
Straight Leg Pant
8 - 30



CL954LL
Womens
Cargo Pant
4 - 30



CL956LS
Womens
Cargo Skirt
4 - 30



CL957LS
Womens
Cargo Short
4 - 26



CL145LS
Womens
Skort
4 - 30
Available in Navy
and Black





CL958ML Mens Comfort Waist Flat Front Pant



CL959ML Mens Comfort Waist Cargo Pant



CL960MS Mens Comfort Waist Cargo Short

- NAVY
- CHARCOAL
- BLACK

MENS COMFORT LOWERS

Breathable, durable, and easy-care fabric. Made from a lightweight plain weave with added stretch for comfort. Comfort lower pants and shorts have a built in comfort stretch waist band, making it perfect for all functional and admin roles.

FABRIC COMPOSITION CARE INSTRUCTIONS

64% Polyester 34% Viscose 2% Elastane
Warm gentle machine wash 40°. Wash inside out with similar colours. Do not bleach, soak or tumble dry. Line dry in shade. Cool iron if required.



CL958ML
Mens Flat Front Pant
72R - 127R



CL959ML
Mens Cargo Pant
72R - 127R



CL960MS
Mens Cargo Short
72R - 127R

JANE LOWERS

The perfect pull-on stretch pant in a lightweight fabric that is durable and comfortable. Quick drying and suitable for all climates.

Perfect for both functional and office roles.



BREATHABLE



EASY STRETCH



LIGHT WEIGHT



QUICK DRYING





Functional back pocket



Light weight fabric that is stretchy, durable and comfortable. Wide basque waistband with anti-roll elastic, no zips or buttons, functional back pocket, and two deep front angled pockets with utility loop on right hand side.

FABRIC COMPOSITION
CARE INSTRUCTIONS

88% Polyester 12% Elastane
Warm gentle machine wash 40°. Wash inside out with similar colours. Do not bleach, soak or tumble dry. Line dry in shade. Cool iron if required.



CL040LL
Womens 3/4 Length Stretch Pant
4 - 30



CL041LL
Womens Stretch Pant
4 - 30

OUR SCRUBS RANGE



HARTWELL SCRUBS

Unisex reversible scrubs. Designed to be commercially laundered and available in sizes XXS - 6XL.
65% Polyester 35% Cotton.

Page 42



CLASSIC BIZ SCRUBS™

Our classic essential scrub range available in Unisex and Womens styles in a relaxed fit.
65% Polyester 35% Cotton.

Page 44



NEW PULSE SCRUBS

Your new go-to scrubs—soft, durable, and made to perform. Modern styling and easy care fabric made with Biz Eco™ recycled fabric. 77% Recycled Polyester 19% Viscose 4% Elastane

Page 46



TOKYO SCRUBS

All-rounder scrubs with added antibacterial and odour protection. Mens and Womens styles in a modern fit.
60% Cotton 40% Polyester.

Page 48





EVERY SCRUBS

Soft, lightweight, wash-and-wear scrubs. Mens and Womens scrubs available in multiple fits and styles.
96% Polyester 4% Elastane.

Page 50



RILEY SCRUBS

Stylish, modern scrubs with antibacterial stretch panels. Mens and Womens scrubs available in multiple fits and styles.
52% Cotton 45% Polyester 3% Elastane.

Page 52



PARKS + ROSE SCRUBS

Riley fabric with added antibacterial protection. Available in Womens Parks zip front top and Rose maternity tunic and pant. 52% Cotton 45% Polyester 3% Elastane with Silverplus®.

Page 54 and 56



PINK SCRUBS

In partnership with NBCF, Biz Care has a range of pink scrubs, polos and accessories with a portion of sales funding breast cancer research.

Page 58



HARTWELL SCRUBS

Unisex reversible scrubs
specifically designed for
commercial laundromats.



BREATHABLE



EASY
IRON



INDUSTRIAL
WASHING



UNISEX

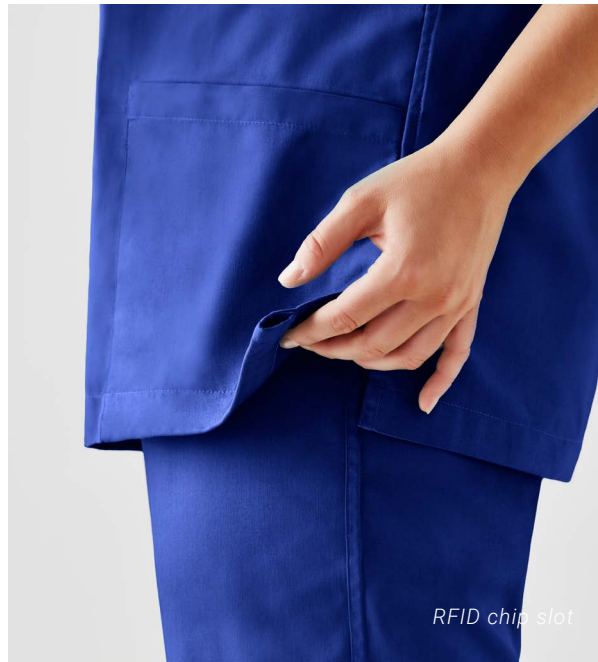


REVERSIBLE





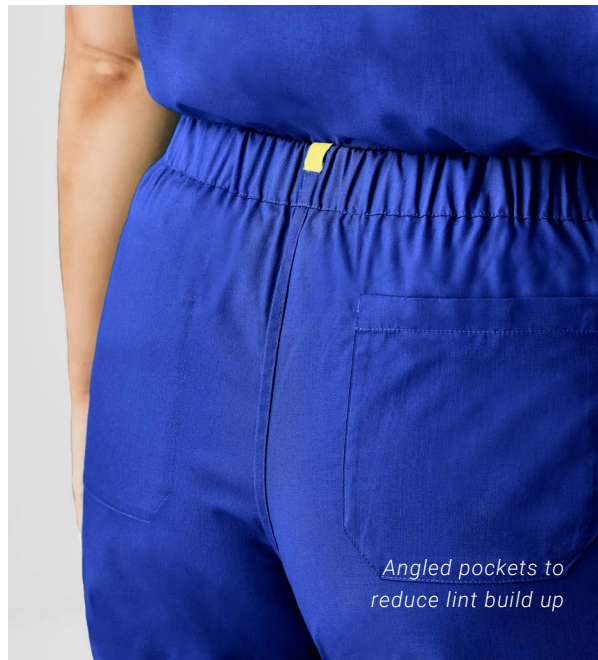
Coloured size pips



RFID chip slot



Full elastic waist and draw string



Angled pockets to reduce lint build up

FABRIC COMPOSITION

65% Polyester 35% Cotton

CARE INSTRUCTIONS

Industrial laundry friendly. Domestic laundry at 60°C or lower. Tumble dry on low or line dry in shade. Warm iron if required.

FEATURES

Chest pocket and back pant pocket on both sides of the garment. Colour coded size pips and RFID chip placement suitability. All trims and fabric suitable for most industrial washing processes.



6XL only available in Dark Blue



CST150US
Unisex Reversible Scrub Top
XXS - 6XL



CSP151UL
Unisex Reversible Scrub Pant
XXS - 6XL



CLASSIC BIZ SCRUBS™

Our Classic scrubs are made from high performance, soft touch fabric with mechanical stretch.



BREATHABLE



EASY
IRON



INDUSTRIAL
WASHING

FABRIC COMPOSITION

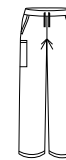
65% Polyester 35% Cotton

CARE INSTRUCTIONS

Can be laundered at 80°C. Do not soak, tumble dry on low, warm iron if needed. Do not dry clean.



H10612
Unisex Classic
Scrub Top
XS - 3XL, 5XL



H10610
Unisex Classic
Scrub Cargo Pant
XS - 3XL, 5XL



H10622
Womens Classic
Scrub Top
XS - 3XL



H10620
Womens Classic
Bootleg Scrub Pant
XXS - 3XL

NAVY

ROYAL

MID BLUE

BLACK

HUNTER
GREEN

PEWTER

PURPLE



CROSSOVER SCRUB TOP

Contrast crossover style can create task or workplace identity and adds a point of difference.



BREATHABLE



EASY
IRON



INDUSTRIAL
WASHING

FABRIC COMPOSITION

65% Polyester 35% Cotton

CARE INSTRUCTIONS

Can be laundered at 80°C. Do not soak, tumble dry on low, warm iron if needed. Do not dry clean.



H10722
Womens Contrast
Crossover Scrub Top
XS - 4XL

NEW

PULSE SCRUBS

Pulse Scrubs are soft, durable, and built for comfort—like your favourite jeans, but made to work. With easy-care Biz Eco™ fabric, they're tough enough for any shift and stylish enough for every wardrobe.



BIZ ECO™



EASY
STRETCH



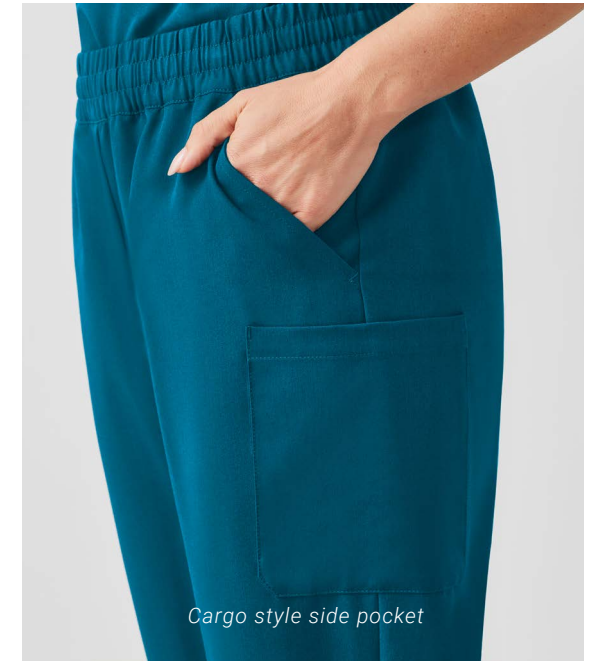
HOT
WASH



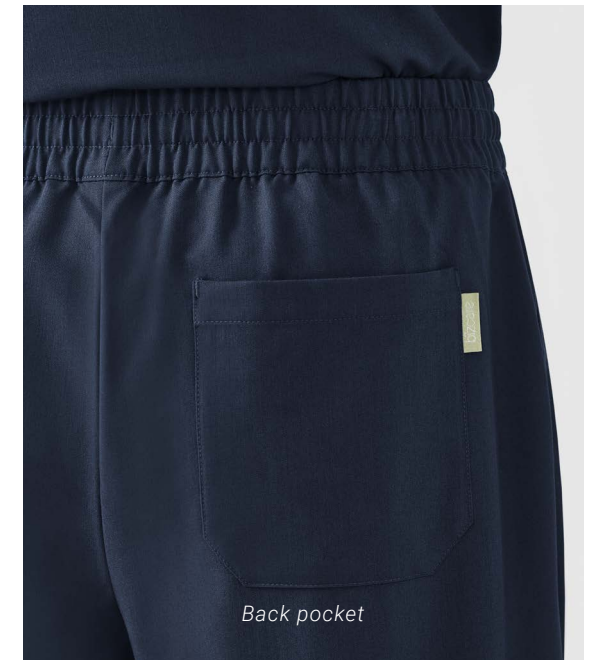
QUICK
DRYING



PET FUR
FRIENDLY



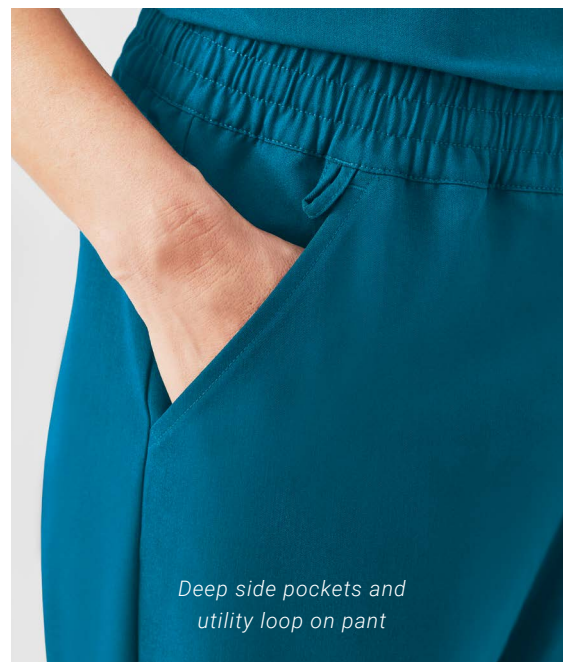
Cargo style side pocket



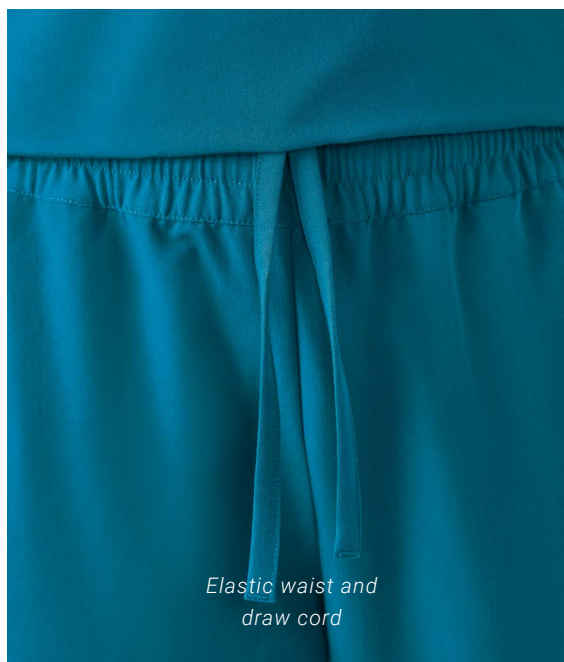
Back pocket



*Durable hem
pockets on top*



*Deep side pockets and
utility loop on pant*



*Elastic waist and
draw cord*



Womens jogger cuff

FABRIC COMPOSITION

77% Recycled Polyester
19% Viscose 4% Elastane

CARE INSTRUCTIONS

Machine washable with similar colours, inside out. Do not bleach. Tumble dry on low. Cool iron if required. Dry cleanable.

CARIBBEAN BLUE

MIDNIGHT NAVY

BLACK



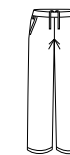
CU543LS
Womens V-Neck
Scrub Top
XXS - 6XL



CL541LL
Womens
Mid Waist
Jogger Pant
XXS - 3XL



CU544US
Unisex V-Neck
Scrub Top
XXS - 6XL



CL542UL
Unisex
Straight Leg
Scrub Pant
XXS - 6XL



TOKYO SCRUBS

A scrub range that is perfect for every body, every function, every day. Treated with SILVERPLUS®, an antimicrobial technology that provides body odour control*.



BREATHABLE



ANTI
ODOUR



CLEVER
STORAGE

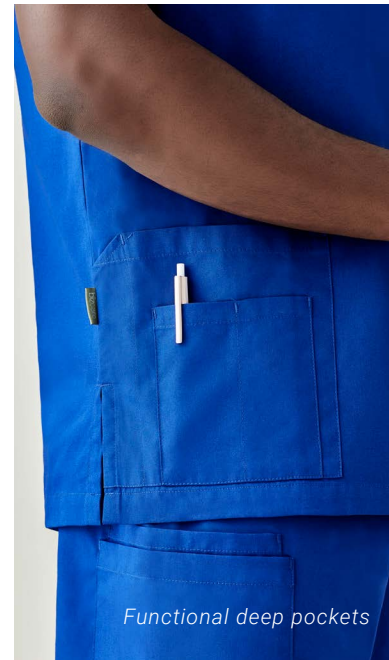


HOT
WASH





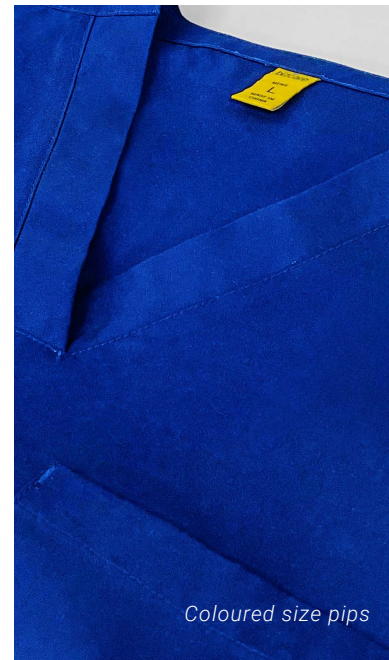
ID loop



Functional deep pockets



Full elastic waist and draw string



Coloured size pips

FABRIC COMPOSITION

60% Cotton
40% Polyester
with antibacterial treatment.

CARE INSTRUCTIONS

For longevity of antibacterial treatment we recommend domestic laundry at 60°C or lower. Tumble dry on low or line dry in shade. Dry cleanable. Warm Iron.

MIDNIGHT NAVY

ROYAL

CHARCOAL

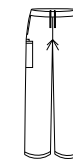
BLACK



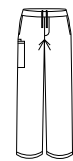
CST141LS
Womens V-Neck
Scrub Top
XXS - 3XL, 5XL



CST141MS
Mens V-Neck
Scrub Top
XXS - 3XL, 5XL



CSP143LL
Womens
Scrub Pant
XXS - 3XL, 5XL











CSP143ML
Mens
Scrub Pant
XXS - 3XL, 5XL



AVERY SCRUBS

Avery scrubs are anything but your typical pair of scrubs! Soft, durable and more comfortable than your favourite pair of pajamas. Designed with attention to detail; functional, responsive, easy-care and durable.

-  BREATHABLE
-  EASY STRETCH
-  MOISTURE WICKING
-  HOT WASH
-  LIGHT WEIGHT
-  QUICK DRYING
-  CLEVER STORAGE
-  PET FUR FRIENDLY



Identifiers



Functional pockets



Utility loops



FABRIC COMPOSITION

96% Polyester
4% Elastane

CARE INSTRUCTIONS

Can be washed at 60°C. Do not bleach, soak or tumble dry. Line dry in shade.



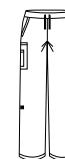
CST941LS
Womens V-Neck
Scrub Top
XS - 5XL



CST942LS
Womens Round
Neck Scrub Top
XXS - 5XL



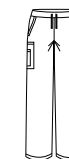
CST945MS
Mens V-Neck
Scrub Top
XS - 5XL



CSP944LL
Womens Straight
Leg Scrub Pant
S - 5XL



CSP943LL
Womens Slim Leg
Scrub Pant
XXS - 3XL



CSP946ML
Mens
Scrub Pant
XS - 5XL



RILEY SCRUBS

Inspired by athleisure and expertly designed to take you through the longest of shifts in comfort. Cotton-rich fabric that feels incredibly soft against the skin, but durable enough for the demands of healthcare.



BREATHABLE



EASY
STRETCH



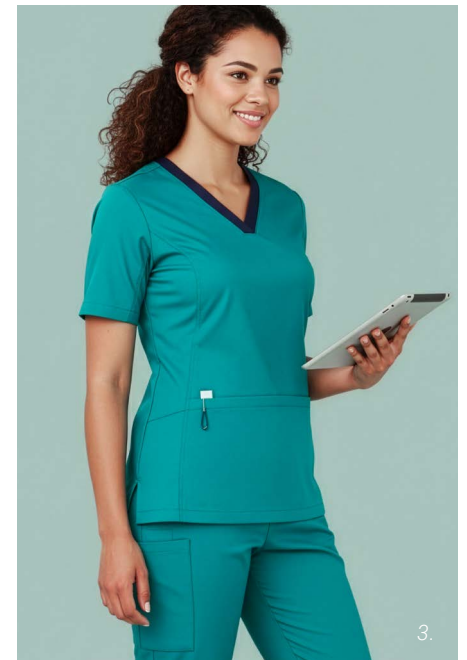
ANTI
ODOUR



CLEVER
STORAGE



HOT
WASH



FEATURED

1. **CST043LS** Scrub Top
CSP047LL Straight Leg
Scrub Pant
CST043MS Scrub Top
CSP042ML Jogger
Scrub Pant
2. **CST043MS** Scrub Top
CSP943LL Straight Leg
Scrub Pant
3. **CST043LS** Scrub Top
4. **CST043LS** Scrub Top
CSP042LL Jogger
Scrub Pant



4.



Antibacterial active stretch side panel



Yoga waistband



Jogger cuff

FABRIC COMPOSITION

Main: 52% Cotton

45% Polyester 3% Elastane

Stretch panels:

88% Polyester 12% Elastane with antibacterial treatment

CARE INSTRUCTIONS

Can be washed at 60°C. Do not bleach or soak. Tumble dry on low or line dry in shade. Dry cleanable. Cool iron body only.

MIDNIGHT NAVY

ELECTRIC BLUE

TEAL

PURPLE

BLACK



CST043LS
Womens V-Neck
Stretch Scrub Top
XXS - 3XL



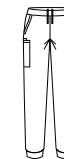
CSP042LL
Womens Slim Leg
Jogger Scrub Pant
XXS - 3XL
Available in Midnight Navy,
Electric Blue and Black



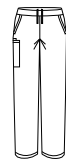
CSP047LL
Womens Straight
Leg Scrub Pant
XXS - 3XL



CST043MS
Mens V-Neck
Stretch Scrub Top
XS - 5XL



CSP042ML
Mens Slim Leg
Jogger Scrub Pant
XS - 5XL
Available in Midnight Navy,
Electric Blue and Black



CSP047ML
Mens Straight
Leg Scrub Pant
XS - 5XL



PARKS ZIP FRONT SCRUB TOP

Cotton-rich fabric with added antibacterial protection and stretch. Full zip front removes the need for overhead removal.

Match tops with Riley lowers, or wear with any Functional lowers.

Suitable for all health and beauty professionals.



BREATHABLE



EASY
STRETCH



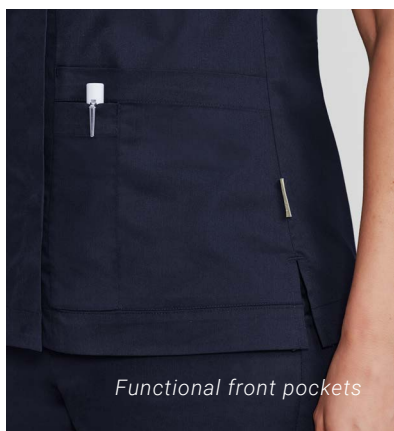
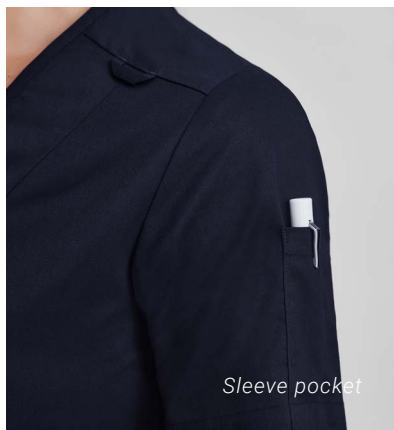
ANTI
ODOUR



CLEVER
STORAGE



HOT
WASH



FABRIC COMPOSITION

52% Cotton 45% Polyester
3% Elastane with
SILVERPLUS® antibacterial
treatment.

CARE INSTRUCTIONS

Can be washed at 60°C. Do not
bleach or soak. Tumble dry on
low or line dry in shade. Dry
cleanable. Cool iron.

MIDNIGHT
NAVY

BLACK



CST240LS
Womens Zip Front
Crossover Scrub Top
XXS - 3XL

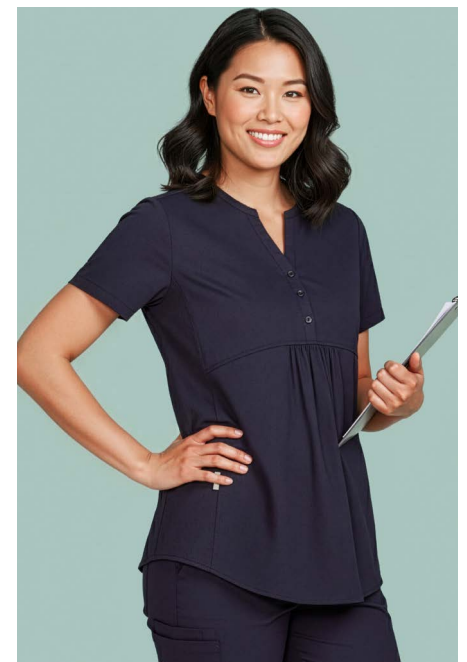
ROSE SCRUBS

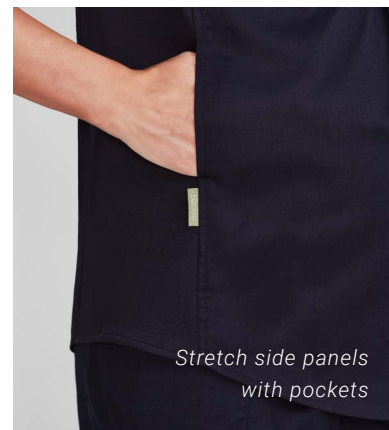
Cotton-rich fabric that feels incredibly soft against the skin, but durable enough for the demands of healthcare. With added Antibacterial protection and stretch.

Rose Tunic can be worn as a maternity scrub top or as a relaxed fit tunic scrub top.



-  BREATHABLE
-  EASY STRETCH
-  ANTI ODOUR
-  CLEVER STORAGE
-  HOT WASH





FABRIC COMPOSITION

Main: 52% Cotton
 45% Polyester
 3% Elastane
 with SILVERPLUS®
 antibacterial treatment
 Stretch panels:
 93% Cotton
 7% Elastane

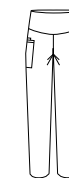


CARE INSTRUCTIONS

Can be washed at 60°C.
 Do not bleach or soak.
 Tumble dry on low or
 line dry in shade.
 Dry cleanable.
 Cool iron body only.



CST243LS
 Womens Tunic
 Scrub Top
 XS - 3XL



CSP244LL
 Womens Maternity
 Scrub Pant
 XS - 3XL

BIZ CARE PINK RANGE

In collaboration with National Breast Cancer Foundation, Biz Care has launched a range of pink products.

A percentage of the proceeds from each item sold will support breast cancer research efforts in Australia.



WOMENS PINK SCRUBS

BIZeco

FABRIC COMPOSITION
77% Recycled Polyester
19% Viscose
4% Elastane

CARE INSTRUCTIONS
Can be washed at 60°C. Do not bleach, soak or tumble dry. Line dry in shade.



CST245LS
Womens Pink
V-Neck Scrub Top
XXS - 3XL



CSP241LL
Womens
Pink Jogger
Scrub Pant
XXS - 3XL



UNISEX PINK SCRUBS

FABRIC COMPOSITION
96% Polyester
4% Elastane

CARE INSTRUCTIONS
Can be washed at 60°C. Do not bleach, soak or tumble dry. Line dry in shade.



CST250US
Unisex Pink
V-Neck Scrub Top
XXS - 6XL



CSP102UL
Unisex Pink
Scrub Pant
XXS - 6XL



WOMENS PINK POLO

FABRIC COMPOSITION

BIZ COOL™ Breathable

80% Polyester

20% Cotton-backed Pique

CARE INSTRUCTIONS

Machine wash cold, line dry, do not tumble dry, do not bleach, do not dry clean, cool iron.



CST313LS
Womens Pink
S/S Polo
6 - 24



MENS PINK POLO

FABRIC COMPOSITION

BIZ COOL™ Breathable

80% Polyester

20% Cotton-backed Pique

CARE INSTRUCTIONS

Machine wash cold, line dry, do not tumble dry, do not bleach, do not dry clean, cool iron.



CST313MS
Mens Pink
S/S Polo
XS - 5XL



PRINTED PINK SCRUB CAP

FABRIC COMPOSITION

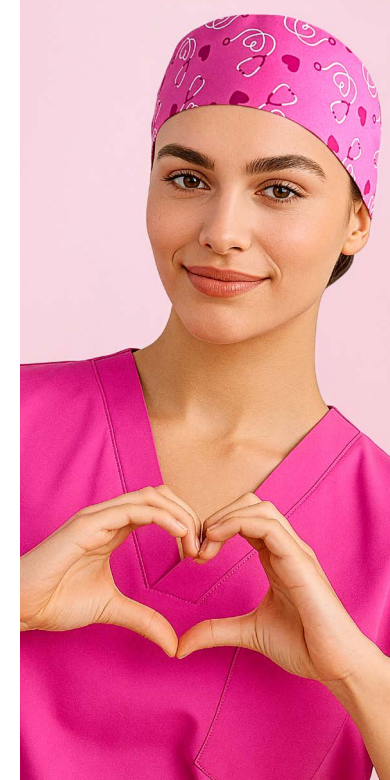
100% Cotton

CARE INSTRUCTIONS

Gentle machine wash. Wash with similar colours. Do not bleach or soak. Tumble dry on low or line dry in shade.



CSC246U
Unisex Pink
Scrub Cap
One Size



HAPPY FEET PINK SOCKS

FABRIC COMPOSITION

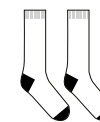
41% Cotton 28% Nylon

26% Polyester

5% Elastane

CARE INSTRUCTIONS

Warm machine wash inside out.



CCS250U
Unisex Pink
Comfort Socks
S, M, L



TEAM DRESSING

INDUSTRY

SHIRTS, T-TOPS & POLOS

FUNCTIONAL LOWERS

CARE SCRUBS

LAB COATS

ACCESSORIES

HEALTH & BEAUTY

KNITWEAR & OUTERWEAR

UNISEX LAB COATS

Our unisex lab coats are made from easy-care performance fabric in a durable cotton twill. Mechanical stretch to provide extra comfort.

FABRIC COMPOSITION

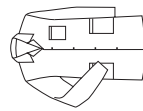
65% Polyester 35% Cotton Twill

CARE INSTRUCTIONS

Easy-care. Machine wash-and-wear.



WHITE



H132ML
Unisex
Lab Coat
XS - 3XL, 5XL





- CHEEKY PETS
- PUPPIES
- SUGAR LAND

PRINTED SCRUB CAP

Made from soft and breathable 100% cotton. Featuring elastic back and tie, designed to stretch easily over buns. Side buttons for your mask.



UNISEX



WARM WASH



BREATHABLE



FABRIC COMPOSITION

100% Cotton

CARE INSTRUCTIONS

Gentle machine wash. Wash with similar colours. Do not bleach or soak. Tumble dry on low or line dry in shade.



CSC245U
Unisex
Scrub Cap
One Size



MIDNIGHT
NAVY

BLACK

REVERSIBLE SCRUB CAP

Reversible scrub caps, perfect for industrial laundering. Made from cotton blend fabric with antibacterial protection. Featuring elastic back and tie, designed to stretch easily over buns.



UNISEX



REVERSIBLE



HOT
WASH



ANTI
BACTERIAL

FABRIC COMPOSITION

60% Cotton 40% Polyester
with antibacterial protection

CARE INSTRUCTIONS

For longevity of antibacterial treatment we recommend domestic laundry at 60°C or lower. Tumble dry on low or line dry in shade. Dry cleanable. Warm Iron.



CSC249U
Unisex Reversible
Scrub Cap
One Size

TEAM
DRESSING

INDUSTRIES

SHIRTS, T-TOPS
& POLOS

FUNCTIONAL
LOWERS

CARE SCRUBS

LAB COATS

ACCESSORIES

HEALTH
& BEAUTY

KNITWEAR
& OUTERWEAR



NAVY

BLACK



SAGE/
BLACK

NAVY/
RED

MID BLUE/
NAVY

HIJAB

Traditional hijab, in a comfortable and non-slip fabric.
Measurements: 172cm (L) x 63cm (W).

FABRIC COMPOSITION
CARE INSTRUCTIONS

100% Polyester Georgette
Machine wash in garment bag on gentle cycle, with little to no pressing required.



CH248L
Hijab
One Size

HAPPY FEET SOCKS

Add a PEP to YOUR STEP with our everyday comfort socks, perfect for those on their feet or sitting down all day.

FABRIC COMPOSITION
CARE INSTRUCTIONS

41% Cotton 28% Nylon
26% Polyester 5% Elastane
Warm machine wash inside out.



CCS149U
Unisex
Comfort Socks
S, M, L



AVERY IDENTIFIERS

The perfect way to differentiate streams and job roles without having the team in different coloured scrubs. Identifiers easily snap onto the hidden press studs on the scrub sleeve. Compatible with Avery Scrub Tops only.

FABRIC COMPOSITION

96% Polyester 4% Elastane with metal press studs



CID940U
Scrub Identifier
One Size

- ELECTRIC BLUE
- MID BLUE
- TEAL
- CHERRY
- GRAPE
- CYAN
- FUCHSIA
- LIME GREEN

ESSENCE JACKETS

Designed to be comfortable and functional, featuring deep pockets, side splits and finished with water repellent treatment. Perfect for Beauty, Dentistry, Pharmacy and Medical industries.



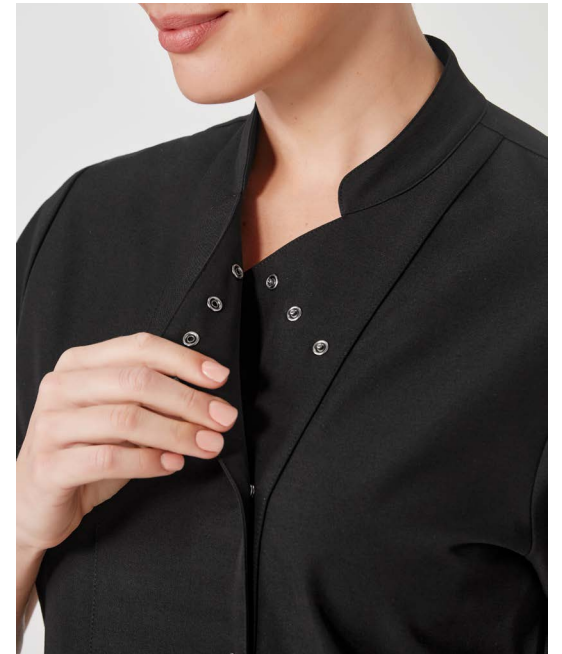
DWR
TREATMENT



WARM
WASH



BREATHABLE





BIZeco

**FABRIC COMPOSITION
CARE INSTRUCTIONS**

77% Recycled Polyester 19% Viscose 4% Elastane with DWR treatment.
Gentle machine wash on warm. Wash inside out with similar colours.
Machine wash inside out with like colours. Do not bleach.
Low tumble dry. Cool iron if required.



CPT451LS
Womens
Jacket
XXS -3XL



CPT451MS
Mens
Jacket
XS-3XL,5XL



ZEN TUNIC

Zen tunic, with Dupont™ Teflon® stain release stretch fabric. Semi-fitted style with side splits and long hemline.

FABRIC COMPOSITION
CARE INSTRUCTIONS

97% Polyester 3% Elastane
Machine wash-and-wear.



H134LS
Womens
Zen Tunic
6 - 20

SPA TUNIC

Our Spa tunic comes in a stretch fabric with linen-like appearance. Dupont™ Teflon® stain release function, asymmetrical mock-wrap front, with invisible centre back zip and deep side splits.

FABRIC COMPOSITION
CARE INSTRUCTIONS

97% Polyester 3% Elastane
Machine wash-and-wear.



H630L
Womens
Spa Tunic
6 - 20



BLACK

NAVY

EDEN TUNIC

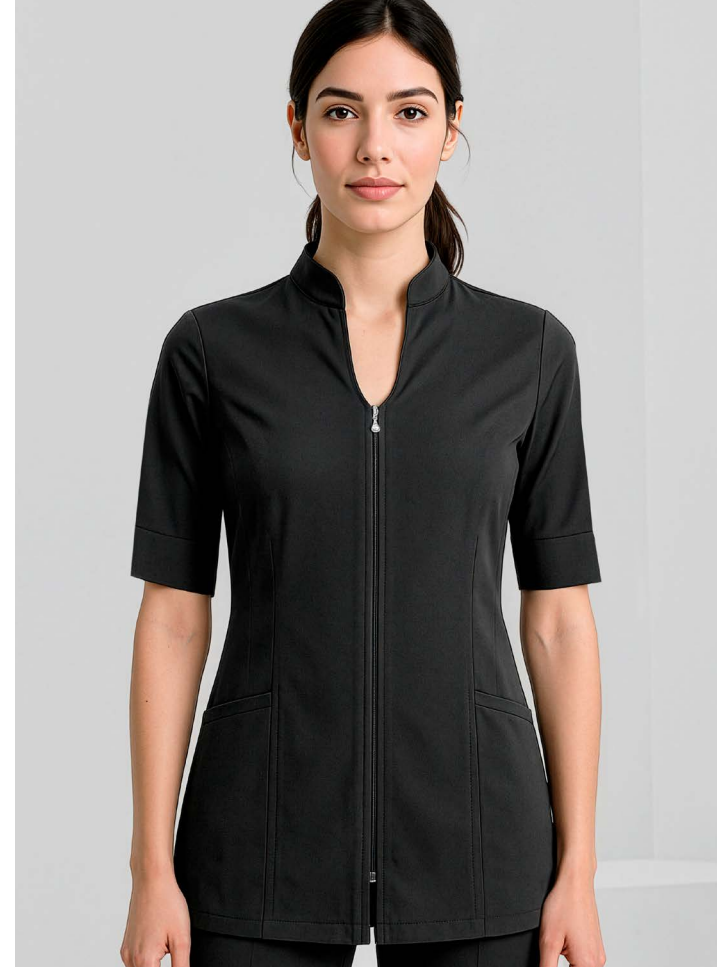
Eden tunic, with Dupont™ Teflon® stain release stretch fabric. Front pockets, longer hem line, semi-fitted, side splits and center back action-back pleat.

FABRIC COMPOSITION
CARE INSTRUCTIONS

97% Polyester 3% Elastane
Machine wash-and-wear.



H133LS
Womens
Eden Tunic
6 - 20



BLACK

BLISS TUNIC

Bliss tunic, with Dupont™ Teflon® stain release stretch fabric. Semi-fitted with side splits, longer length vented sleeves, 2-way zip with nickle free diamantè and front pockets.

FABRIC COMPOSITION
CARE INSTRUCTIONS

97% Polyester 3% Elastane
Machine wash-and-wear.



H632L
Womens
Bliss Tunic
6 - 20

BIZ CARE KNITS





NAVY

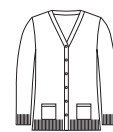
CHARCOAL

BLACK
CK962LC
ONLY

Designed for functional roles, Biz Care knits provide warmth, durability and a soft hand feel. With longer hem lengths to provide extra coverage.

FABRIC COMPOSITION
CARE INSTRUCTIONS

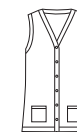
60% Acrylic 40% Merino Wool
Warm gentle machine wash with wool approved detergent.



CK045LC
Womens Button
Front Knit Cardigan
XXS - 4XL




CK962LC
Womens Zip
Front S/S Knit
XXS - 4XL



CK961LV
Womens Button
Front Knit Vest
XXS - 4XL



- NAVY
- CHARCOAL
- BLACK

 BIZ COLLECTION

2-WAY ZIP CARDIGAN

The perfect blend for those after a non-wool alternative. 2-way zip allows for multiple styling options.

FABRIC COMPOSITION
73% Viscose 27% Nylon

CARE INSTRUCTIONS
Machine washable.



LC3505
Womens 2-Way
Zip Cardigan
S - 4XL

See the full range of styles and colours available in the Biz Collection catalogue.



NAVY

CHARCOAL

BLACK

BIZ COLLECTION

MILANO VEST

Easy-care, 12-gauge wool blend knits are perfect for keeping you warm in cooler environments.

FABRIC COMPOSITION
50% Pre-Shrunk Wool 50% Acrylic

CARE INSTRUCTIONS
Machine washable.



LV619L
Womens
Milano Vest
XS - 3XL



WV619M
Mens
Milano Vest
XS - 3XL, 5XL

See the full range of styles and colours available in the Biz Collection catalogue.



NOVA RANGE

The modern take on the traditional fleece outerwear. Nova is made from easy-care performance brushed knit suitable for the most demanding environments.



EASY
CARE



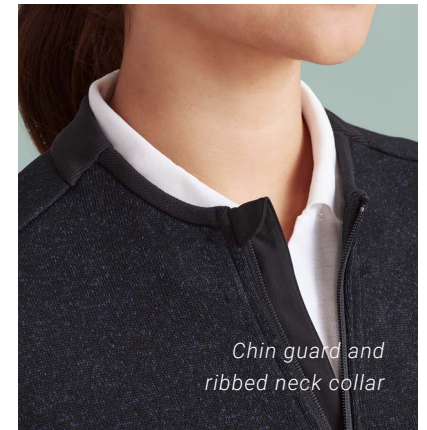
ULTRA
SOFT



ANTI
BACTERIAL



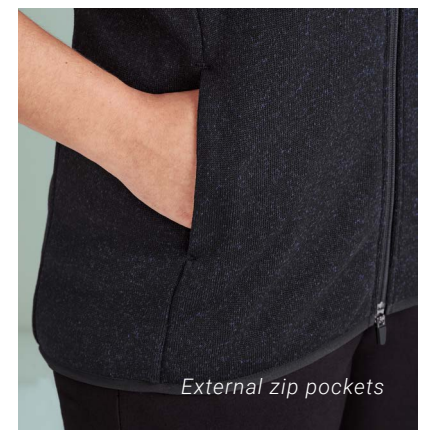
CLEVER
STORAGE



*Chin guard and
ribbed neck collar*



*Womens styles
with 2-way zip*



External zip pockets



Breathable and soft fabric offers warmth and wind protection. Treated with Antibacterial to assist with odor control. Nova is suitable for a wide range of industries.



FABRIC COMPOSITION

Main: 100% Polyester
 Brushed Melange Knit Fleece with Antibacterial Treatment
 Rib Neck: 100% Polyester

CARE INSTRUCTIONS

Machine wash cold. Wash inside out. Do not bleach. Tumble dry low to medium. Warm iron if required. Dry cleanable.



C0342LJ
 Womens Zip Front Jumper
 XS - 3XL



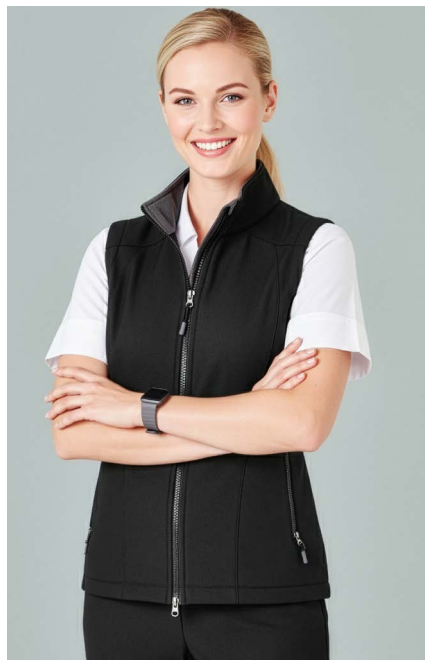
C0343LV
 Womens Zip Front Vest
 XS - 3XL



C0342MJ
 Mens Zip Front Jumper
 XS - 5XL



C0343MV
 Mens Zip Front Vest
 XS - 5XL



NAVY
GRAPHITE

BLACK
GRAPHITE

BIZ COLLECTION

GENEVA RANGE

Breathable softshell membrane offers wind and water repellent protection with ribbed fleece lining for lightweight warmth.

FABRIC COMPOSITION

BIZTECH™ 100% Polyester

CARE INSTRUCTIONS

Machine washable.



J307L
Womens
Geneva Jacket
S - 2XL



J404L
Womens
Geneva Vest
S - 2XL



J307M
Mens
Geneva Jacket
S - 3XL, 5XL



J404M
Mens
Geneva Vest
S - 3XL, 5XL

See the full range of styles and colours available in the Biz Collection catalogue.



NAVY

BLACK

BIZ COLLECTION

FLEECE RANGE

The essential micro-fleece jacket and vest range is low-pilling with 2 side zip pockets.

FABRIC COMPOSITION

100% Polyester

CARE INSTRUCTIONS

Machine washable.



PF631
Womens
Fleece Jacket
8 - 24



PF905
Womens
Fleece Vest
8 - 24



PF630
Mens
Fleece Jacket
XS - 3XL, 5XL



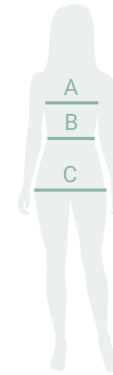
F233MN
Mens
Fleece Vest
XS - 3XL, 5XL

See the full range of styles and colours available in the Biz Collection catalogue.

WOMENS SIZE GUIDE

Biz Care apparel sizes are designed to fit average industry standards for the below body measurements. Please use this handy Body Measurement Guide to compare your own measurements and help you determine which size to order.

Use these measurements as a guide when selecting the right size garment, but also take into consideration the garment fit.



A. BUST - Measure under your arms and across shoulder blades, around the fullest part of your bust.

B. WAIST - Measure around your natural waistline. This is the smallest part of your waist.

C. HIP - Measure around fullest part of your hips (about 20 - 24 cm down from waist) while standing naturally.

PANT AND SKIRT LENGTHS - Pants and skirts will vary in length depending on the height and shape of each individual. Most pants come with a hem allowance for easy alterations.

Womens Shirts, Scrub Tops, Knitwear and Outerwear

AU/NZ		XXS		XS	S	M	L	XL	2XL		3XL		4XL		5XL
		4	6	8	10	12	14	16	18	20	22	24	26	28	30
Bust	cm	75-77	78-82	83-87	88-92	93-97	98-102	103-108	109-114	115-119	120-124	125-129	130-134	135-139	140-144
	in	29-30	30-32	32-34	34-36	36-38	38-40	40-42	42-44	44-46	46-48	48-50	50-52	52-54	54-56

Womens Pants, Scrub Pants and Skirts

AU/NZ		XXS		XS	S	M	L	XL	2XL		3XL		4XL		5XL
		4	6	8	10	12	14	16	18	20	22	24	26	28	30
Waist	cm	57-59	60-64	65-69	70-74	75-79	80-84	85-90	91-96	97-101	102-106	107-111	112-116	117-121	122-126
	in	22-23	23-25	25-27	27-29	29-31	31-33	33-35	35-37	37-39	40-42	42-44	44-46	46-48	48-50
Hip	cm	84-86	87-91	92-96	97-101	102-106	107-111	112-117	118-123	124-128	129-133	134-138	139-143	144-148	149-153
	in	33-34	34-36	36-38	38-40	40-42	42-44	44-46	46-48	48-50	50-52	52-54	54-56	56-58	58-60

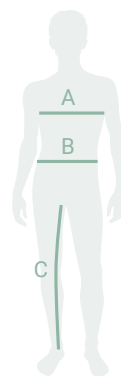
All measurements provided are approximate body measurements and for reference only.

Actual sizing may vary according to the style and fit of the garment. Not all styles are available in all sizes, please refer to product pages for available sizing.

MENS SIZE GUIDE

Biz Care apparel sizes are designed to fit average industry standards for the below body measurements. Please use this handy Body Measurement Guide to compare your own measurements and help you determine which size to order.

Use these measurements as a guide when selecting the right size garment, but also take into consideration the garment fit.



A. CHEST - Measure under your arms and across shoulder blades, around the fullest part of your chest. Hold one finger between body and tape.

B. WAIST - Measure around your natural waistline while holding one finger between body and tape. Measure over shirt at position your pants would normally sit.

C. IN SEAM - Measure from the crotch seam to the bottom of the inside leg of a well-fitting pair of pants.

PANT LENGTHS - Pants will vary in length depending on the height of each individual and also their shape. Most pants come with a hem allowance for easy alterations.

Mens Shirts, Polos, Knitwear and Outerwear

AU/NZ		XXS	XS	S	M	L	XL	2XL		3XL		4XL		5XL		6XL		7XL	
Chest	cm	87	92	97	102	107	112	117	122	127	132	137	142	147	152	157	162	167	172
	in	34	36	38	40	42	44	46	48	50	52	54	56	57.8	59.8	61.8	63.7	65.7	67.7
Neck	cm	34	36	38	40	42	44	46	48	50	52	54	56	56	56	58	58	58	58
	in	13.3	14.1	14.9	15.7	16.5	17.3	18.1	18.8	19.6	20.4	21.2	22	22	22	22.8	22.8	22.8	22.8

Mens Pants, Shorts, and Scrub Pants. Unisex Scrub Pants.

Mens Pant Size	72	77	82	87	92	97	102	107	112	117	122	127	132	137	142	147	152	157	
Alpha Size	XXS	XS	S	M	L	XL	2XL		3XL		4XL		5XL		6XL		7XL		
Waist	cm	72	77	82	87	92	97	102	107	112	117	122	127	132	137	142	147	152	157
	in	28	30	32	34	36	38	40	42	44	46	48	50	52	54	56	58	60	62

Unisex Scrub Tops and Unisex Lab Coats

AU/NZ		XXS	XS	S	M	L	XL	2XL		3XL		4XL		5XL		6XL		7XL	
Chest	cm	87	92	97	102	107	112	117	122	127	132	137	142	147	152	157	162	167	172
	in	34	36	38	40	42	44	46	48	50	52	54	56	58	60	62	64	66	68

This catalogue has been compiled and presented with due care and is considered to be true and correct at the time of publication. Colours are reproduced as closely as possible, but may differ slightly from actual products due to printing processes and paper composition. Please refer to www.biz-care.com for the latest up-to-date products and information.

INDEX

TOPS & SHIRTS

FLORENCE EASY STRETCH TOPS - SOLID COLOURS

CS947LS	Florence Womens Plain S/S Shirt	22
CS949LS	Florence Womens Plain S/S Tunic	22
CS951LT	Florence Womens Plain 3/4 Sleeve Shirt	22

FLORENCE EASY STRETCH TOPS - PRINT

CS450LS	Florence Womens Stardust Print S/S Tunic	25
CS948LS	Florence Womens Daisy Print S/S Shirt	24
CS950LS	Florence Womens Daisy Print S/S Tunic	24

T-TOPS

CS952LS	Marley Womens Jersey S/S Top	26
CT247LL	Performance Womens Cotton L/S Tee	26
CT247ML	Performance Mens Cotton L/S Tee	27

SHIRTS

● LB3600	Oasis Womens ¾ Sleeve Shirt	28
● LB3601	Oasis Womens S/S Shirt	28
● SH3603	Oasis Mens S/S Shirt	28
● S265LS	Oasis Womens Plain Overblouse	28
● S770LS	Monaco Womens S/S Shirt	29
● S770LT	Monaco Womens ¾ Sleeve Shirt	29
● S770MS	Monaco Mens S/S Shirt	29

LOWERS

FUNCTIONAL COMFORT WAIST LOWERS - WOMENS

CL145LS	Womens Skort	34
CL953LL	Womens Slim Leg pant	34
CL954LL	Womens Cargo Pant	34
CL955LL	Womens Straight Leg Pant	34
CL956LS	Womens Cargo Skirt	34
CL957LS	Womens Cargo Short	34

FUNCTIONAL COMFORT WAIST LOWERS - MENS

CL958ML	Mens Straight Leg Pant	36
CL959ML	Mens Cargo Pant	36
CL960MS	Mens Cargo Short	36

FUNCTIONAL STRETCH LOWERS - WOMENS

CL040LL	Jane Womens 3/4 Length Stretch Pant	38
CL041LL	Jane Womens Stretch Pant	38

CARE SCRUBS

HARTWELL SCRUBS

CSP151UL	Hartwell Unisex Reversible Scrub Pant	42
CST150US	Hartwell Unisex Reversible Scrub Top	42

CLASSIC BIZ SCRUBS™

● H10610	Classic Unisex BIZ SCRUBS™ Cargo Pant	44
● H10612	Classic Unisex BIZ SCRUBS™ Top	44
● H10620	Classic Womens BIZ SCRUBS™ Bootleg Pant	44
● H10622	Classic Womens BIZ SCRUBS™ Top	44
● H10722	Contrast Womens BIZ SCRUBS™ Top	45

PULSE SCRUBS

CU543LS	Pulse Womens V-Neck Scrub Top NEW	46
CL541LL	Pulse Womens Mid Waist Jogger Pant NEW	46
CU544US	Pulse Unisex V-Neck Scrub Top NEW	46
CL542UL	Pulse Unisex Straight Leg Scrub Pant NEW	46

TOKYO SCRUBS

CST141LS	Tokyo Womens V-Neck Scrub Top	48
CST141MS	Tokyo Mens V-Neck Scrub Top	48
CSP143LL	Tokyo Womens Scrub Pant	48
CSP143ML	Tokyo Mens Scrub Pant	48

AVERY SCRUBS

CST941LS	Avery Womens V-Neck Scrub Top	50
CST942LS	Avery Womens Round Neck Scrub Top	50
CSP943LL	Avery Womens Slim Leg Scrub Pant	50
CSP944LL	Avery Womens Straight Leg Scrub Pant	50
CST945MS	Avery Mens V-Neck Scrub Top	50
CSP946ML	Avery Mens Straight Leg Scrub Pant	50

RILEY SCRUBS

CSP042LL	Riley Womens Slim Leg Jogger Scrub Pant	52
CSP042ML	Riley Mens Slim Leg Jogger Scrub Pant	52
CSP047LL	Riley Womens Straight Leg Scrub Pant	52
CSP047ML	Riley Mens Straight Scrub Pant	52
CST043LS	Riley Womens V-Neck Scrub Top	52
CST043MS	Riley Mens V-Neck Scrub Top	52

PARKS SCRUBS

CST240LS	Parks Womens Zip Front Scrub Top	54
-----------------	----------------------------------	----

ROSE SCRUBS

CST243LS	Rose Womens Tunic Scrub Top	56
CSP244LL	Rose Womens Maternity Scrub Pant	56

PINK NBCF RANGE

CCS250U	Pink Happy Feet Unisex Comfort Socks	59
CSC246U	Pink Printed Unisex Scrub Cap	59
CSP102UL	Pink Unisex Scrub Pant	58
CSP241LL	Pink Womens Jogger Scrub Pant	58
CST245LS	Pink Womens V-Neck Scrub Top	58
CST250US	Pink Unisex V-Neck Scrub Top	58
CST313LS	Pink Womens S/S Polo	59
CST313MS	Pink Mens S/S Polo	59

LABCOATS

● H132ML	Classic Unisex Lab Coat	60
-----------------	-------------------------	----

ACCESSORIES

CCS149U	Happy Feet Unisex Comfort Socks	64
CH248L	Hijab	64
CID940U	Avery Scrub Identifier (Pack of 5)	65
CSC245U	Printed Unisex Scrub Cap	62
CSC249U	Reversible Unisex Scrub Cap	63

HEALTH & BEAUTY

CPT451LS	Essence Womens Dentist/Pharmacy Jacket	66
CPT451MS	Essence Mens Dentist/Pharmacy Jacket	66
● H133LS	Eden Womens Tunic	69
● H134LS	Zen Womens Crossover Tunic	68
● H630L	Spa Womens Tunic	68
● H632L	Bliss Womens Tunic	69

KNITWEAR & OUTERWEAR**KNITS**

CK045LC	Womens Button Front Cardigan	70
CK961LV	Womens Button Front Vest	70
CK962LC	Womens Zip Front S/S Cardigan	70
C0342LJ	Nova Womens Knit Jacket	74
C0342MJ	Nova Mens Knit Jacket	74
C0343LV	Nova Womens Knit Vest	74
C0343MV	Nova Mens Knit Vest	74
● LC3505	2-Way Zip Womens Cardigan	72
● LV619L	Milano Womens Vest	73
● WV619M	Milano Mens Vest	73

SOFT SHELLS

● J307K	Geneva Kids Jacket	76
● J307L	Geneva Womens Jacket	76
● J307M	Geneva Mens Jacket	76
● J404L	Geneva Womens Vest	76
● J404M	Geneva Mens Vest	76

FLEECEES

● F233MN	Plain Microfleece Mens Vest	77
● PF630	Plain Microfleece Mens Jacket	77
● PF631	Plain Microfleece Womens Jacket	77
● PF905	Plain Microfleece Womens Vest	77

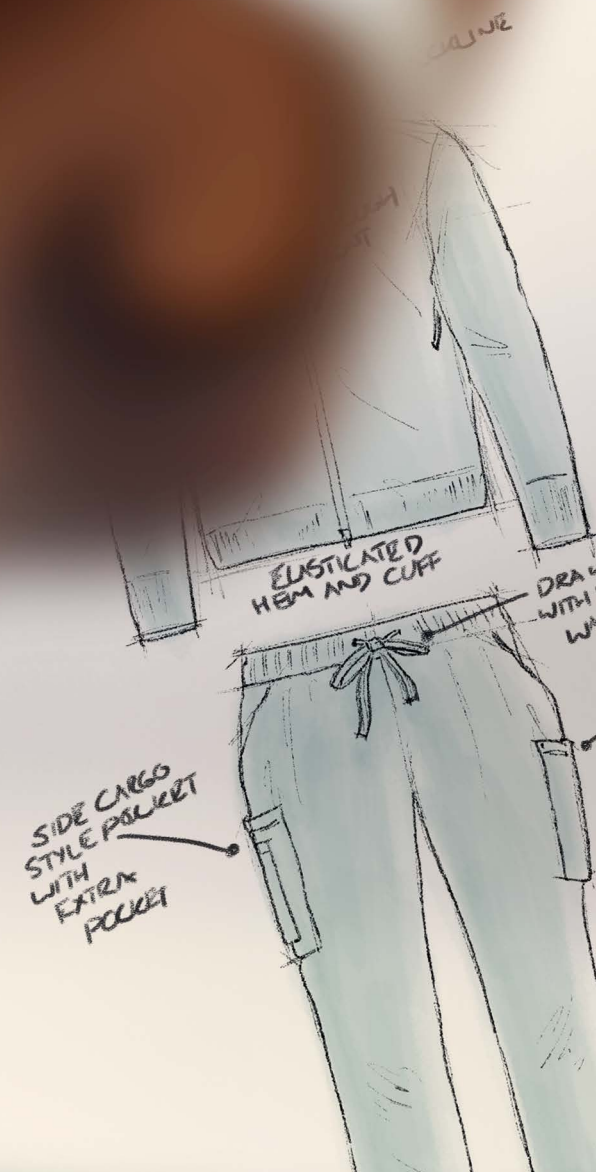
YOUR VISION OUR CREATION

Biz Care and the rest of Fashion Biz's family of brands present a range of styles and garment options that cater for nearly every workplace and team imaginable.

Our garments can be seen across multiple industries in many functions and applications. Having a "stock service" option allows for quick fulfilment of orders, and every garment in this catalogue is housed with good stock depth across all our main warehouses.

In the event you require a bespoke or custom made option, our dedicated 'Special Make' production team can facilitate your specific requirements. Whether for schools, sports, government or corporate, our team can present unique and one-of-a-kind options for all scenarios.

**Please contact your Fashion Biz Representative
to discuss your options.**



bizcare



DESIGN YOUR OWN!

Challenge us with your custom apparel needs.

FASHION BIZ

YOUR EVERYDAY UNIFORM SOLUTION

For over three decades, Fashion Biz and its family of uniform, promotional apparel, teamwear and workwear brands have delivered on style, comfort, performance, and affordability.

Our styles seamlessly co-ordinate together across all our ranges to enable you to build your own unique look no matter if you're in the boardroom, front-of-house, construction site or hospital ward. We continue to be energised by the ever changing needs and demands of the workplace for garments that are modern, functional and utilise more sustainable fibres.

Explore our ranges today and let us provide you with a complete uniform solution.



 BIZ COLLECTION

 BIZCORPORATES

 SYZMIK
WORKWEAR

 bizcare

 YES!CHEF



FASHION BIZ

WANT TO SHARE THE LOVE?
FOLLOW US ON SOCIAL!

@bizcollectionapparel

@syzmikworkwear

@bizcareapparel

@bizcorporates





bizcare

WWW.BIZ-CARE.COM

THANK YOU ♥ FOR CARING



FASHION BIZ