

# Hard Yakka

NOTHING'S TOUGHER



2025  
CATALOGUE

# **WORKWEAR THAT WORKS AS HARD AS YOU DO**

**THE HARD YAKKA RANGE IS DESIGNED TO KEEP PACE WITH YOUR HARDWORKING LIFESTYLE.**

**WITH DEPENDABLE ESSENTIALS AND INNOVATIVE SAFETY FEATURES, WE DELIVER EVERYTHING YOU NEED TO STAY SAFE, COMFORTABLE, AND PRODUCTIVE ON THE JOB.**

# DEPENDABILITY

Hard Yakka workwear is your reliable partner in the toughest jobs. Always in stock and meeting the best industry standards, our gear is built to last.



# QUALITY AND RANGE

Our collection is designed with your diverse needs in mind. Offering a wide selection of quality workwear, we ensure that no matter your job or budget, you'll find the right fit with Hard Yakka.



# PROTECTION

Our workwear isn't just about durability, it's about your safety too. Boasting the highest UPF rating, we provide protection against the harsh Australian environment.



# VALUE

Our wide selection and competitive prices make us the smart and affordable option for high-quality workwear.



# Hard Yakka

NOTHING'S TOUGHER



Workwear Group is committed to reducing our environmental impact and we strive to continually improve our environmental performance. This book is produced on FSC® certified stock, manufactured elemental chlorine free and in accordance to ISO14001 EMS.





**7 WHERE LEGENDS BEGIN**

**8 NOTHING'S TOUGHER**

**10 SUSTAINABILITY**

**12 VISUAL RANGE INDEX**

**16 OUR RANGES**

**28 TECHNOLOGIES GUIDE**

**32 PANTS**

**48 SHORTS**

**56 SHIRTS**

**72 COVERALLS**

**78 POLOS**

**84 T-SHIRTS**

**88 FLEECE**

**92 JACKETS**

**98 ACCESSORIES**

**104 FOOTWEAR**

**120 FITTING GUIDE**

**121 CONTACT US**

**122 HI-VIS STANDARDS**

**123 UPF RATINGS**

**124 INDUSTRY GUIDE**

**126 STYLE INDEX**

# Hard Yakka

NOTHING'S TOUGHER



# WHERE LEGENDS BEGIN

At Hard Yakka, we embody toughness and resilience. Established in 1930 by David K. Laidlaw in the heart of Brunswick, Victoria, we've been setting the bar high for workwear ever since. We started off with a simple mission: to make gear that's as hardworking as the individuals who wear it, a principle that we still stand by today.

Over the years, Hard Yakka has evolved to meet the challenges of the harshest worksites, constantly redefining the standards of durability and quality. But we haven't lost sight of our roots. We're still driven by the same commitment to craftsmanship that gave rise to our first work garments, a testament to our unwavering Aussie spirit.

As leaders in the industrial workwear industry, our gear is designed with advanced technology and sustainability at its core, ensuring optimal performance and durability. Our products are built to withstand the toughest Australian conditions, serving as a trusted companion to our hardworking customers.

But Hard Yakka is more than just workwear – it's a lifestyle embraced by those who aren't afraid to roll up their sleeves and get their hands dirty. It's for the legends who rise to the challenge, day in and day out. Our gear doesn't just meet your expectations, it exceeds them, empowering you to conquer any task head-on.

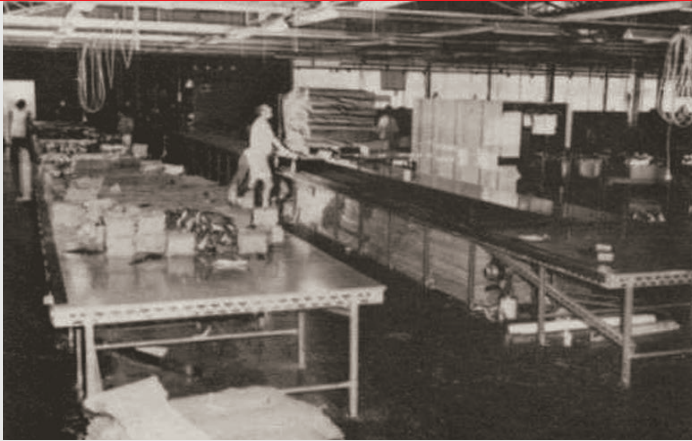
So, when you put on a piece of Hard Yakka apparel or step into our footwear, you're not just wearing a brand, you're stepping into a legacy of toughness and unwavering determination. Choose Hard Yakka – the gear that doesn't just last, but leads the way. After all, there's nothing tougher than Hard Yakka.

# NOTHING'S TOUGHER

## HARD IS IN OUR DNA SINCE 1930.

Born during the Great Depression, we know the meaning of hard.

### 1930's -



In 1930, David K. Laidlaw kick-started Hard Yakka from his parents' home in Brunswick, Victoria.

The brand, drawing its name from the Aboriginal term for "work," quickly became a symbol of quality and durability in workwear. With business flourishing,

Hard Yakka repurposed an old army hall in Sunbury into a factory, producing Nicks (children's bib shorts) and boxer shorts.

### 1960's -



Hard Yakka quickly gained a reputation for resilience, quality, and longevity.

Spurred by the growing demand and continual product enhancements, a new, expansive six-acre manufacturing plant was established in Broadmeadows, becoming the central hub for Yakka Pty Ltd.

### 1970's -



Hard Yakka, deeply entrenched in the Australian narrative, further stamped its mark as an Aussie icon with the "Railway" commercial.

This famous advertisement features the distinctive Hard Yakka chant, crafted by Mike Brady.

## 1980's -

Expanding beyond Australia, Hard Yakka made its mark in New Zealand.

By the mid-1980s, the "Haulpac" commercial, as indomitable as Hard Yakka itself, further amplified the brand's fame.



## 1990's -

With the vision to offer comprehensive work solutions, Hard Yakka launched a range of safety and non-safety footwear, a venture that scored impressive success, or in Aussie terms, "kicked big goals."



## 2000's -

Since the dawn of the new millennium, Hard Yakka has been an unstoppable force in workwear innovation.

The company rolled out several new ranges, including Hard Yakka Koolgear and Hard Yakka Legends.

More recently, they introduced two innovative lines: Hard Yakka Xtreme, designed for those braving extreme conditions, with a focus on safety, comfort, and cutting-edge technology, and Hard Yakka for Women, a unique line offering style and function, specifically designed to comfortably fit women in the workforce.



## 2024 AND BEYOND

Embracing the next phase of our rich legacy, we honour our real champions - the relentless tradespeople who depend on our workwear. They are the embodiment of toughness, moulded by the demanding landscapes of the harshest places on Earth. Their uncompromising standards inspire us to produce nothing less than the best.

We place sustainability at the heart of our business as we continue our innovative journey. Our focus is on crafting superior-quality workwear and footwear, designed to withstand the most challenging climates, all while embodying modern aesthetic trends.

As we expand our global footprint, we stay committed to our cornerstone traits of durability, resilience, and innovation. Trust us to keep you well-dressed, confident, and comfortable, while we champion sustainability.



# BUILDING A BETTER FUTURE

## HARD YAKKA'S PATH TO SUSTAINABLE AND ETHICAL PRACTICES

Hard Yakka, as part of Workwear Group, operates within the Wesfarmers framework that ensures we follow strict procedures and product safety requirements and comply with firm standards on ethical production and human rights.

We take full accountability and are responsible for the products we create. Our key objectives align with our four pillars — people, sourcing, community and environment — which are aligned with the United Nations' Sustainable Development Goals (SDG).

Our mission is clear, to have a positive influence on our community, the products we create and the planet we all share.

### Ethical Sourcing & Human Rights

We strive to source products in a responsible manner while working with suppliers to improve their social and environmental practices.

Hard Yakka opposes the use of Modern Slavery practices in all forms and is committed to an ongoing journey of reducing and eradicating the risk of modern slavery in its supply chains and throughout its business operations, both domestically and abroad. We endeavour to source products in a responsible manner while working with suppliers to improve their Ethical & Modern slavery practices.

Being a subsidiary of Wesfarmers, Hard Yakka as a Workwear Group brand has reported publicly on our ongoing journey and performance against abolishing Modern Slavery within our supply chain since 2015. Progress on how we assess, remediate and mitigate Ethical and Modern Slavery risk throughout our supply base is made publicly available through Wesfarmers 2023 Modern Slavery Statement.

We utilise the Sedex Platform for monitoring of social compliance. To align with global best practice, we use the SMETA 6.1 audit methodology, developed by Sedex. As such, we hold our suppliers accountable in a range of areas including safety practices, legal compliance, labour and human rights, modern slavery, anti-bribery and environmental impact. Our Local Australian Manufacturers are compliant with our ECA Accreditation.

We are committed to collaborating with our people, suppliers and the wider industry, improving working conditions for people employed along our supply chain and strengthen relationships with suppliers. We partner with the Bangladesh Accord (RMG Sustainability Council [RSC]), Ethical Clothing Australia (ECA), Baptist World Aid, Better Cotton and Sedex, and we are constantly looking for new partnerships to ensure we are delivering world-class sustainable objectives. By partnering with industry leading organisations, we guarantee that we are always striving for world's best practice in this ever-growing space.

Our company mission is to be the leading workwear provider and make every wearer feel proud, protected and positive at work, rest or play.

Hard Yakka, as part of Workwear Group, upholds strict standards regarding product quality and safety. Workwear Group quality management system is accredited to the ISO 9001:2015 standard. This system covers every aspect of the production process, from design to finished product. We seek to provide the highest quality products for our customers, and our policies and programs ensure we can deliver on this promise. Workwear Group have robust inspection and testing processes in place for pre and post-production to ensure quality, safety and product performance standards are maintained.

**Sedex** Member

**ACCORD**  
on Fire and Building Safety in Bangladesh

**ethical  
clothing**  
AUSTRALIA

**BAPTIST  
WORLD AID**  
AUSTRALIA

**better  
cotton**<sup>™</sup>



SCAN FOR MODERN  
SLAVERY STATEMENT



SCAN FOR OUR APPROACH  
TO HUMAN RIGHTS

As a member of APCO, Workwear Group is committed to the 2025 National Packaging Targets. Hard Yakka is a trusted brand of Workwear Group and is focused on reducing on-product packaging and increasing recycled content in packaging.

Packaging reduction initiatives that Hard Yakka is working on include:

- Further reducing the number of swing tickets on Hard Yakka products;
- Replacing plastic tags with JUTE twine for Hard Yakka swing tags;
- Reducing excess plastic packaging from Hard Yakka footwear range and providing one swing tag only;
- Reducing the number of garment polybags by introducing a single carton liner for high volume Hard Yakka products.\*
- A partnership with Reground to collect and recycle coloured soft plastic. Reground creates a community around waste resources and our current waste disposal structure to minimise the number of coffee grounds, chaff and soft plastic ending up in landfill.
- Rebranding our new warehouse cartons to ensure the end user knows how to dispose of the packaging correctly.
- Ensuring all footwear boxes are made from fully recycled cardboard and advising customers that branded cardboard cartons are Forest Stewardship Council (FSC®) certified and should be recycled.



## Responsible Fabrics & Responsible Sourcing



### Diverting waste from landfill, by introducing recycled materials.

REPREVE® is a brand of recycled materials made by Unifi, Inc, a global textile solutions provider and one of the world's leading innovators in synthetic and recycled performance fibres. Unifi believes true innovation starts in the fibre, and REPREVE® is one of Unifi's proudest creations – made today for the good of tomorrow.

For consumers who want to care for the environment, now and into the future, REPREVE® is the leading brand that inspires to be a catalyst for change through recycling. When they buy products made with REPREVE®, they know they are part of a movement to protect the land, oceans, wildlife, air and natural resources they love, for the next generation.

REPREVE® is performance fibre made from 100% recycled materials, including recycled plastic bottles. REPREVE® is creating an amazing loop that recovers waste to make our land, oceans, air and natural resources sustainable for the next generation.



### We're on a mission – a mission to improve cotton farming globally.

Hard Yakka, as part of Workwear Group, has committed to sourcing 100 per cent of its cotton from preferred or 'more sustainable sources by 2025. 'More sustainable' cotton includes Better Cotton, Australian Cotton, organic cotton and recycled cotton. Hard Yakka, as part of Workwear Group, has taken a step forward in our sustainability journey by partnering with Better Cotton to improve cotton farming practices globally.

Better Cotton trains farmers according to best-farming practices covering efficient water use, soil health care, harmful pesticides and fertiliser reduction, and respect for worker rights and wellbeing. As of FY24, 79 per cent of our cotton is sourced as Better Cotton, ahead of our 2025 target.\*\* Better Cotton is sourced via a system of 'mass balance'. While the cotton fibre itself is not physically traceable to end products, Better Cotton farmers benefit from the demand for Better Cotton in equivalent volumes to those we 'source.'

Better Cotton brings together farmers, ginners, manufacturers, retailers, brands, civil society and grassroots organisations in a unique global community committed to developing Better Cotton as a sustainable mainstream commodity.

## Footwear For The Future

### Our Sustainability Journey, One Step At A Time

At Hard Yakka, we know how important it is that we all do our part. We continuously seeking ways to reduce our footprint through product design and development. Hard Yakka is very passionate about this and strives to be an industry leader in finding new ways to incorporate both recycled materials and improved processes, minimising waste its waste.

A part of our sustainability journey has been increasing the use of recycled materials in our footwear products.

Key sustainable elements used across our footwear products:

- Recycled ETPU popcorn footbeds
- TPU made with recycled materials
- Recycled cardboard footwear boxes
- Reduction in the number of swing tags (where feasible)
- Removal of the secondary lace packaging (plastic bags).

\* Removing polybags is not feasible in some instances, as it might lead to damage, mould or dirt that makes the garment unfit for sale. In such cases, the environmental impact of using a polybag to protect the garment is perceived as lower than having to discard the garment in question. Workwear Group strives to find solutions to reduce or eliminate plastic bags wherever possible.

\*\* WWG have committed to sourcing 100% of cotton used in our own-brand products (including Hard Yakka) from preferred (more sustainable) sources by 2025. Preferred cotton includes cotton sourced through Better Cotton, Australian cotton, recycled cotton and organic cotton.

# VISUAL RANGE INDEX

## 3056 X-RANGE



**Y02205**  
SEE PAGE 34



**Y08061**  
SEE PAGE 34



**Y05166**  
SEE PAGE 50



**Y05167**  
SEE PAGE 50



**Y19559**  
SEE PAGE 86



**Y08060**  
SEE PAGE 86



**Y60363**  
SEE PAGE 112



**Y60364**  
SEE PAGE 113

## 3056 TOUGHMAXX



**Y02204**  
SEE PAGE 34



**Y05164**  
SEE PAGE 51



**Y05165**  
SEE PAGE 51



**Y60359**  
SEE PAGE 111



**Y60360**  
SEE PAGE 111

## RAPTOR



**Y02441**  
SEE PAGE 34



**Y02717**  
SEE PAGE 35



**Y08382**  
SEE PAGE 35



**Y02586**  
SEE PAGE 35



**Y08411**  
SEE PAGE 35



**Y05161**  
SEE PAGE 52



**Y05160**  
SEE PAGE 52



**Y08497**  
SEE PAGE 52



**Y08228**  
SEE PAGE 52

## 3056



**Y03400**  
SEE PAGE 36



**Y08812**  
SEE PAGE 36



**Y08227**  
SEE PAGE 36



**Y08302**  
SEE PAGE 36



**Y02552**  
SEE PAGE 37



**Y02855**  
SEE PAGE 37



**Y02880**  
SEE PAGE 37



**Y02255**  
SEE PAGE 38



**Y08930**  
SEE PAGE 38



**Y02340**  
SEE PAGE 38



**Y05190**  
SEE PAGE 53



**Y05115**  
SEE PAGE 53



**Y05100**  
SEE PAGE 53



**Y06723**  
SEE PAGE 95



**Y21418**  
SEE PAGE 95



**Y60200**  
SEE PAGE 106



**Y60201**  
SEE PAGE 106



**Y60202**  
SEE PAGE 106



**Y60203**  
SEE PAGE 107



**Y60274**  
SEE PAGE 107



**Y60240**  
SEE PAGE 109



**Y60245**  
SEE PAGE 109



**Y60250**  
SEE PAGE 109

## LEGENDS



**Y02906**  
SEE PAGE 38



**Y02202**  
SEE PAGE 39



**Y08079**  
SEE PAGE 39



**Y02210**  
SEE PAGE 39



**Y02740**  
SEE PAGE 39



**Y03041**  
SEE PAGE 40



**Y03105**  
SEE PAGE 40



**Y05066**  
SEE PAGE 53



**Y07295**  
SEE PAGE 59



**Y08744**  
SEE PAGE 59

## MUSTANG JEANS



**Y43245**  
SEE PAGE 41



**Y43246**  
SEE PAGE 41



**Y43247**  
SEE PAGE 41



**Y43434**  
SEE PAGE 41



**Y02575**  
SEE PAGE 42



**Y02615**  
SEE PAGE 42



**Y08380**  
SEE PAGE 42



**Y02540**  
SEE PAGE 42



**Y02501**  
SEE PAGE 43



**Y02500**  
SEE PAGE 43



**Y08850**  
SEE PAGE 43



**Y02300**  
SEE PAGE 43



**Y02570**  
SEE PAGE 44



**Y08840**  
SEE PAGE 44



**Y02530**  
SEE PAGE 44



**Y08381**  
SEE PAGE 44



**Y02965**  
SEE PAGE 45



**Y02960**  
SEE PAGE 45



**Y02596**  
SEE PAGE 45



**Y02597**  
SEE PAGE 45



**Y02411**  
SEE PAGE 46



**Y03513**  
SEE PAGE 46



**Y02594**  
SEE PAGE 46



**Y03514**  
SEE PAGE 47



**Y44610**  
SEE PAGE 47



**Y03875**  
SEE PAGE 47



**Y03876**  
SEE PAGE 47



**Y05545**  
SEE PAGE 54



**Y05620**  
SEE PAGE 54



**Y05350**  
SEE PAGE 54



**Y05340**  
SEE PAGE 54



**Y05500**  
SEE PAGE 55



**Y05067**  
SEE PAGE 55



**Y07752**  
SEE PAGE 58



**Y04006**  
SEE PAGE 59



**Y08806**  
SEE PAGE 60



**Y07910**  
SEE PAGE 61



**Y04610**  
SEE PAGE 62



**Y04605**  
SEE PAGE 62



**Y07990**  
SEE PAGE 62



**Y04615**  
SEE PAGE 62



**Y07984**  
SEE PAGE 63



**Y07940**  
SEE PAGE 63



**Y04620**  
SEE PAGE 63



**Y08805**  
SEE PAGE 63



**Y07735**  
SEE PAGE 64



**Y07950**  
SEE PAGE 64



**Y08423**  
SEE PAGE 64



**Y07558**  
SEE PAGE 64

## CORE

**CORE**



**Y07978**  
SEE PAGE 65



**Y08225**  
SEE PAGE 65



**Y07754**  
SEE PAGE 65



**Y07559**  
SEE PAGE 65



**Y07996**  
SEE PAGE 66



**Y07899**  
SEE PAGE 66



**Y04265**  
SEE PAGE 67



**Y04275**  
SEE PAGE 67



**Y08421**  
SEE PAGE 67



**Y08420**  
SEE PAGE 67



**Y07530**  
SEE PAGE 68



**Y07540**  
SEE PAGE 68



**Y07500**  
SEE PAGE 68



**Y07510**  
SEE PAGE 68



**Y04630**  
SEE PAGE 69



**Y04625**  
SEE PAGE 69



**Y07227**  
SEE PAGE 66



**Y07590**  
SEE PAGE 70



**Y07591**  
SEE PAGE 70



**Y07691**  
SEE PAGE 70



**Y00262**  
SEE PAGE 74



**Y01055**  
SEE PAGE 74



**Y00270**  
SEE PAGE 74



**Y01526**  
SEE PAGE 74



**Y00010**  
SEE PAGE 75



**Y01555**  
SEE PAGE 75



**Y01010**  
SEE PAGE 75



**Y00015**  
SEE PAGE 76



**Y00030**  
SEE PAGE 76



**Y19619**  
SEE PAGE 80



**Y19617**  
SEE PAGE 80



**Y08604**  
SEE PAGE 80



**Y08603**  
SEE PAGE 80



**Y19618**  
SEE PAGE 81



**Y19616**  
SEE PAGE 81



**Y08602**  
SEE PAGE 81



**Y08601**  
SEE PAGE 81



**Y11379**  
SEE PAGE 82



**Y11389**  
SEE PAGE 82



**Y11307**  
SEE PAGE 82



**Y11383**  
SEE PAGE 83



**Y11396**  
SEE PAGE 83



**Y11306**  
SEE PAGE 83



**Y19251**  
SEE PAGE 87



**Y19326**  
SEE PAGE 90



**Y19542**  
SEE PAGE 90



**Y19324**  
SEE PAGE 90



**Y19325**  
SEE PAGE 91



**Y19270**  
SEE PAGE 91



**Y19330**  
SEE PAGE 91



**Y06680**  
SEE PAGE 96



**Y06675**  
SEE PAGE 96



**Y06670**  
SEE PAGE 96



**Y06057**  
SEE PAGE 97



**Y06685**  
SEE PAGE 97



**Y06545**  
SEE PAGE 97



**Y21480**  
SEE PAGE 97

## ACCESSORIES



**Y20110**  
SEE PAGE 100



**Y08606**  
SEE PAGE 100



**Y20035**  
SEE PAGE 100



**Y20120**  
SEE PAGE 100



**Y22943**  
SEE PAGE 101



**Y26455**  
SEE PAGE 101



**Y26578**  
SEE PAGE 101



**Y26791**  
SEE PAGE 102



**Y22826**  
SEE PAGE 102



**Y09402**  
SEE PAGE 102



**Y22301**  
SEE PAGE 103



**Y22370**  
SEE PAGE 103



**Y22980**  
SEE PAGE 103

## FOOTWEAR



**Y60200**  
SEE PAGE 106



**Y60201**  
SEE PAGE 106



**Y60202**  
SEE PAGE 106



**Y60203**  
SEE PAGE 107



**Y60274**  
SEE PAGE 107



**Y60240**  
SEE PAGE 109



**Y60245**  
SEE PAGE 109



**Y60250**  
SEE PAGE 109



**Y60120**  
SEE PAGE 110



**Y60125**  
SEE PAGE 110



**Y60235**  
SEE PAGE 110



**Y60359**  
SEE PAGE 111



**Y60360**  
SEE PAGE 111



**Y60363**  
SEE PAGE 112



**Y60280**  
SEE PAGE 112



**Y60285**  
SEE PAGE 112



**Y60364**  
SEE PAGE 113



**Y60190**  
SEE PAGE 113



**Y60174**  
SEE PAGE 114



**Y60175**  
SEE PAGE 114



**Y60177**  
SEE PAGE 114



**Y60087**  
SEE PAGE 116



**Y60088**  
SEE PAGE 116



**Y60085**  
SEE PAGE 117



**Y60086**  
SEE PAGE 117



**Y60178**  
SEE PAGE 117

**Hard Yakka**

# 3056 X-RANGE

Sports-inspired workwear: For the athletes of the job site

PERFORMANCE TEE  
SEE PAGE 86

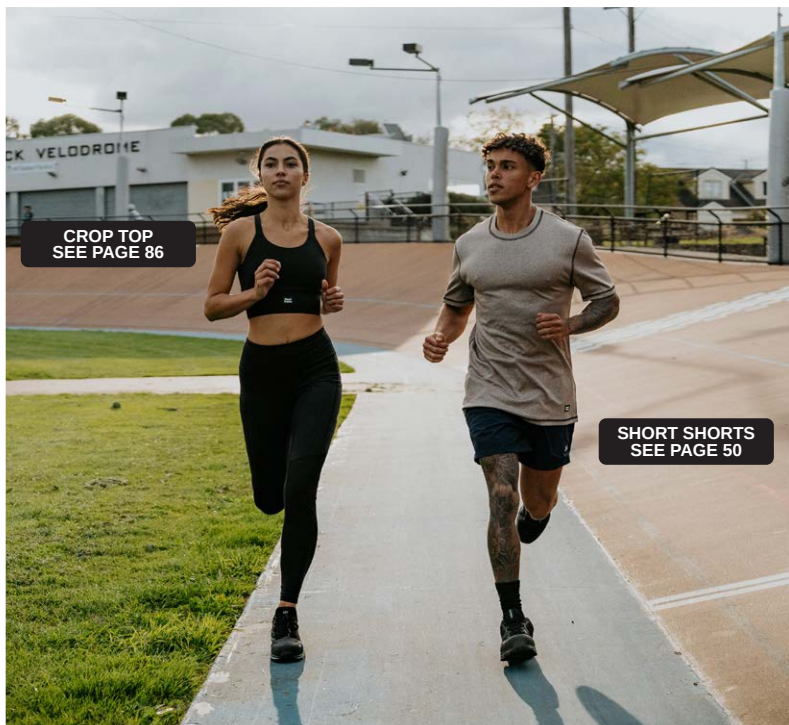
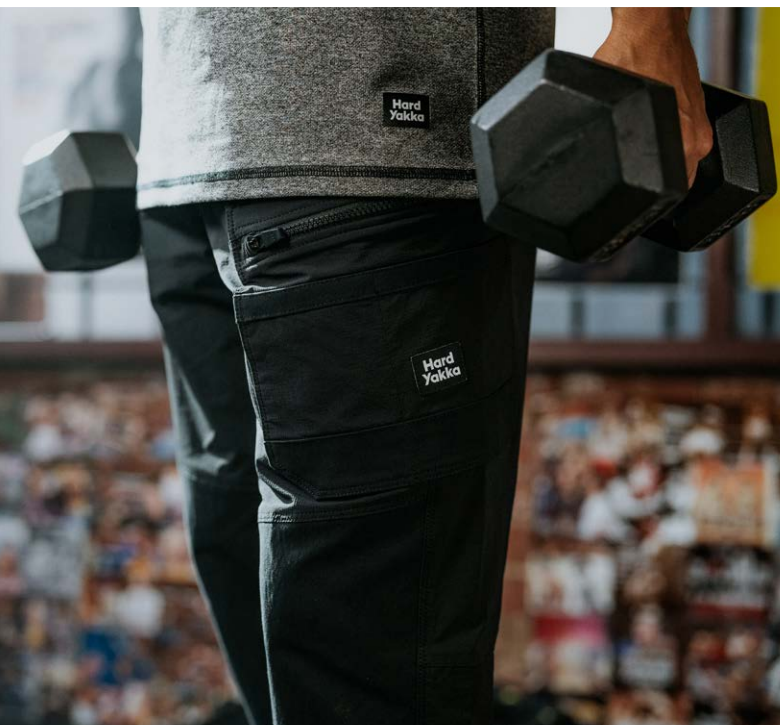
PANTS  
SEE PAGE 34

LEGGINGS  
SEE PAGE 34





MID LENGTH SHORTS  
SEE PAGE 50

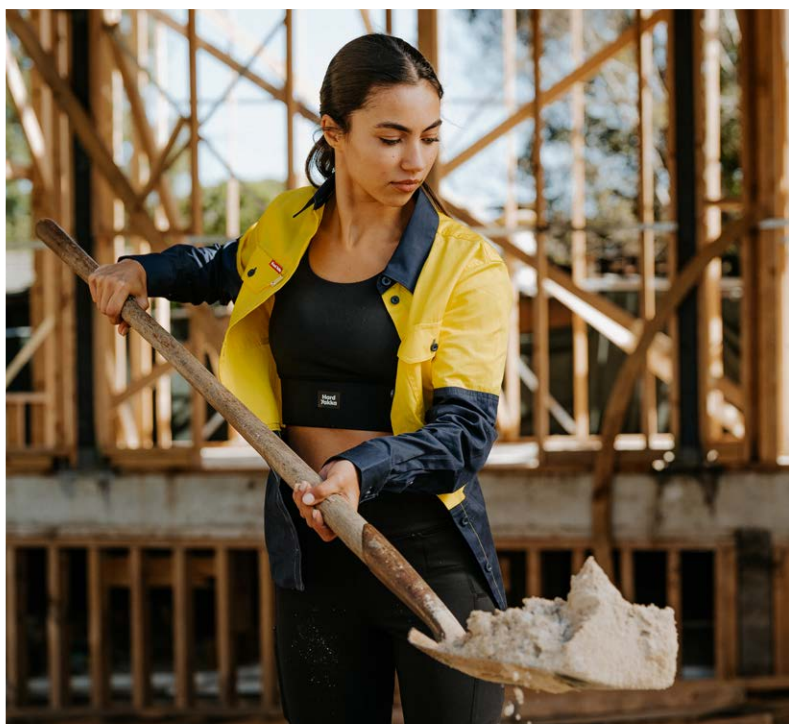


CROP TOP  
SEE PAGE 86

SHORT SHORTS  
SEE PAGE 50



LOW SHOE  
SEE PAGE 113



**Hard Yakka**

# RAPTOR

Performance Workwear for Active  
Tradies: Ultra Durable, Unstoppable

SHORT SHORTS  
SEE PAGE 52

PANTS  
SEE PAGE 34

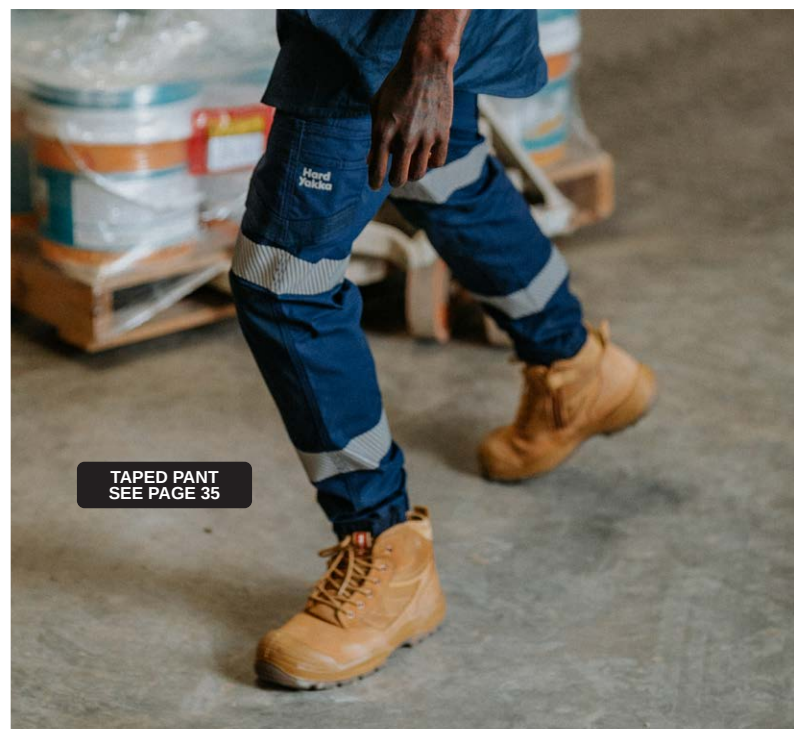




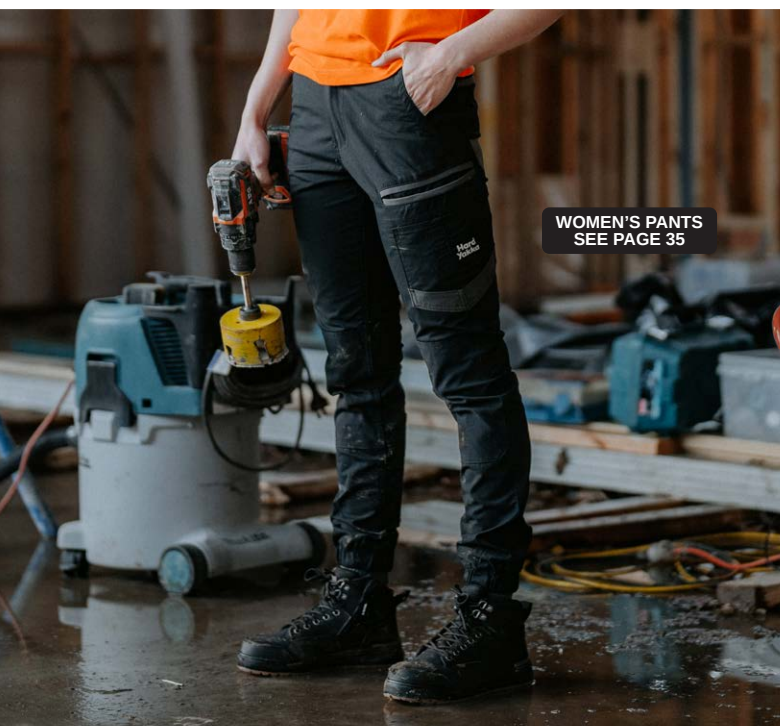
MID LENGTH SHORTS  
SEE PAGE 52



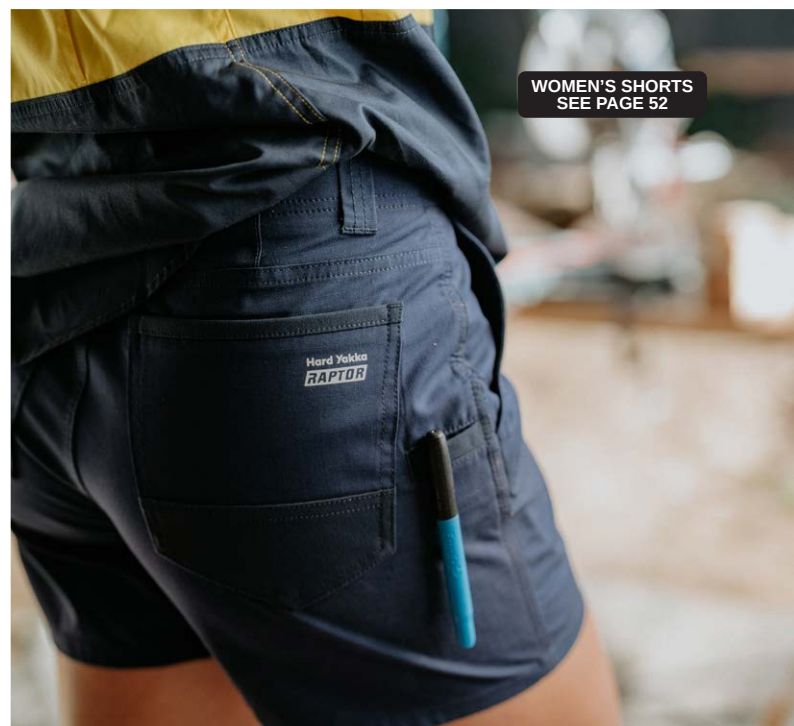
SHORT SHORTS  
SEE PAGE 52



TAPED PANT  
SEE PAGE 35



WOMEN'S PANTS  
SEE PAGE 35



WOMEN'S SHORTS  
SEE PAGE 52

**Hard Yakka**

# 3056 TOUGHMAXX

Designed for those who aren't afraid to get their hands dirty

LYING



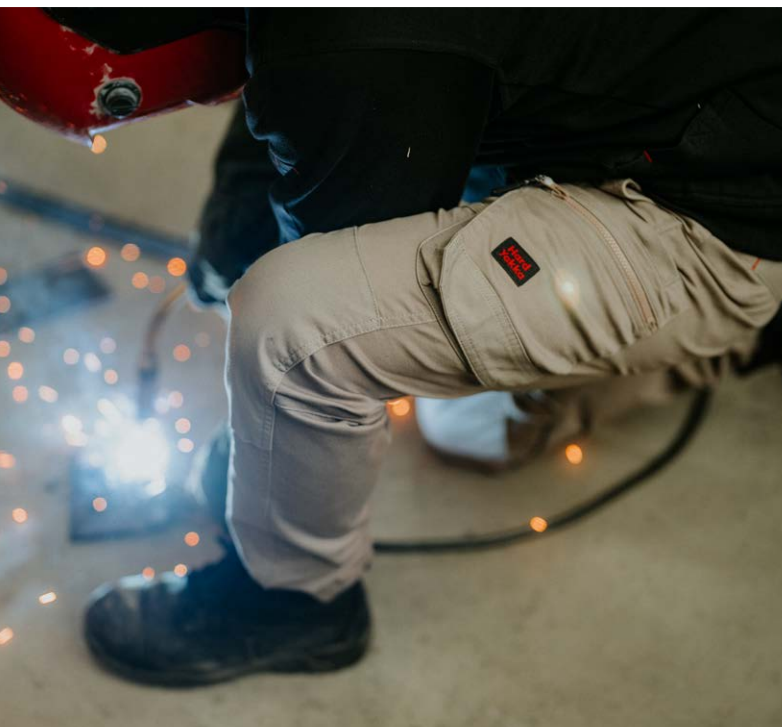
MID LENGTH SHORTS  
SEE PAGE 51

BOOTS  
SEE PAGE 111





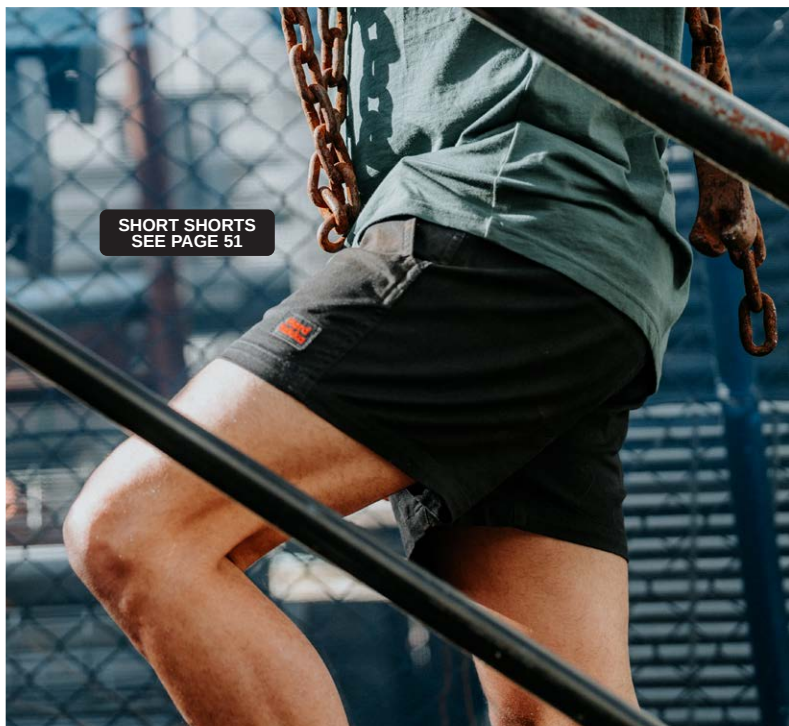
BOOTS  
SEE PAGE 111



BOOTS  
SEE PAGE 111



PANTS  
SEE PAGE 34



SHORT SHORTS  
SEE PAGE 51

**Hard Yakka**

# LEGENDS

Super tough, built to last



SHORTS  
SEE PAGE 53



PANTS  
SEE PAGE 39



WOMEN'S PANTS  
SEE PAGE 39



PANTS  
SEE PAGE 39



PANTS  
SEE PAGE 40



PANTS  
SEE PAGE 40

**Hard Yakka**

# CORE

Built for everyone,  
in every trade

WOMEN'S POLO  
SEE PAGE 81

WOMEN'S PANTS  
SEE PAGE 42

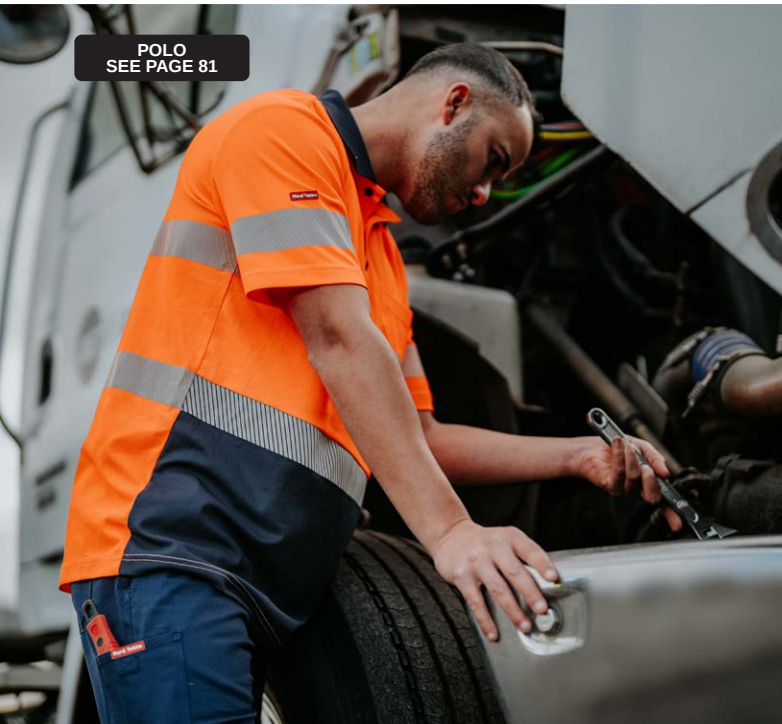




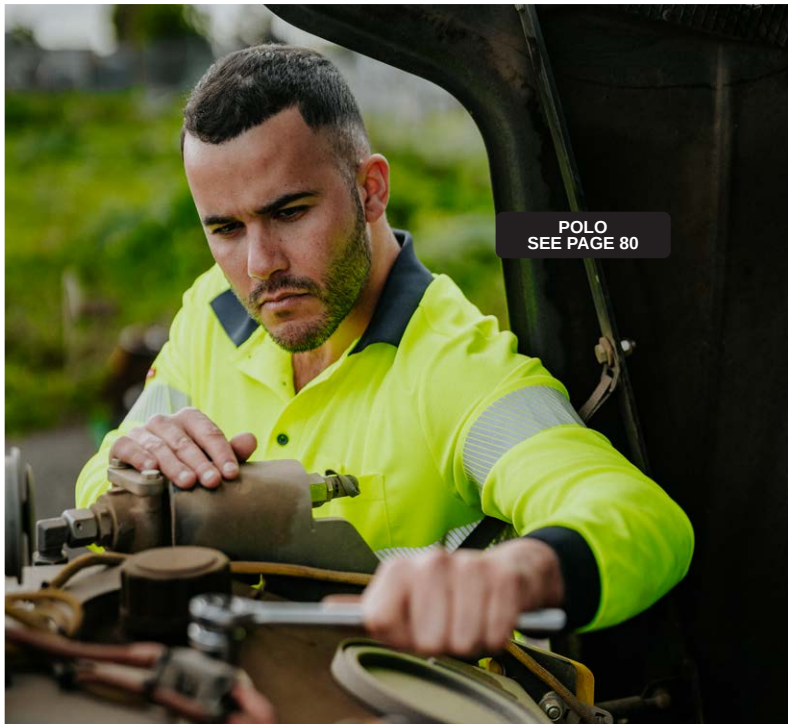
POLO  
SEE PAGE 83



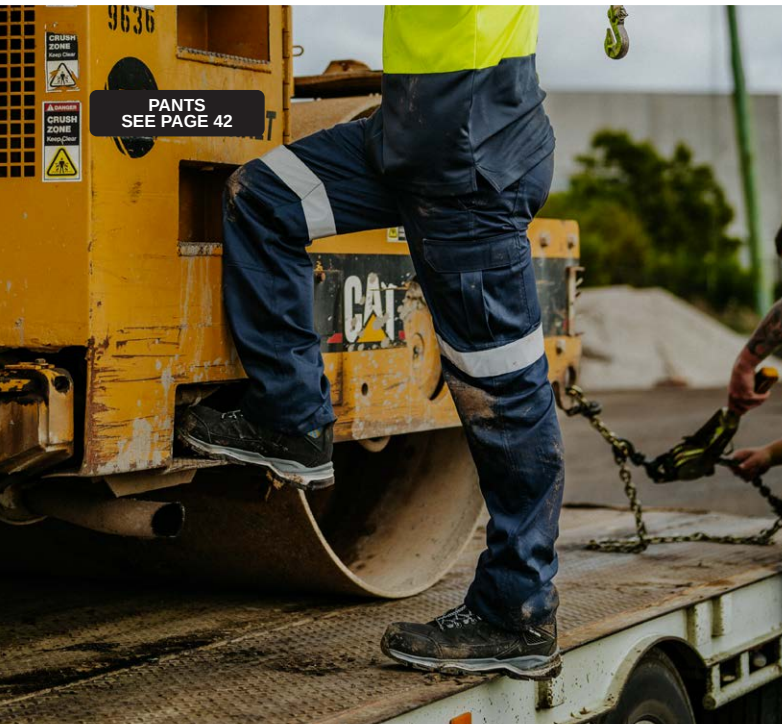
WOMEN'S PANTS  
SEE PAGE 42



POLO  
SEE PAGE 81



POLO  
SEE PAGE 80



PANTS  
SEE PAGE 42



WOMEN'S POLO  
SEE PAGE 80

**Hard Yakka**

# FOOTWEAR

Hard Yakka Footwear is Built to Last:  
Tough, Durable, Reliable

3056 BOOT  
SEE PAGE 107





UTILITY BOOT  
SEE PAGE 110



WOMEN'S 3056 BOOT  
SEE PAGE 109



OUTBACK BOOT  
SEE PAGE 114



OUTBACK BOOT  
SEE PAGE 114



ICON SHOE  
SEE PAGE 113



ATOMIC BOOT  
SEE PAGE 112

# ICONS & TECHNOLOGIES



## ANTIMICROBIAL

Minimise bacteria and odours with Hard Yakka's range of garments treated with antimicrobial finish. You'll end the day as fresh as you started.



## HI-VIS DAY/NIGHT

For use in day, night, dawn, dusk or in poor weather conditions where there is illumination from headlights. Complies with AS 4602.1:2011 Hi-vis Safety Garments Class Day/Night.\*



## BREATHABLE

Hard Yakka products that feature fabrics with naturally breathable properties, to keep you cool and comfortable all day.



## HI-VIS NIGHT

Garments designed for night use using retro reflected light. Complies with AS 4602.1:2011 Hi-vis Safety Garments Class Night.\*



## COOL FLOW

Engineered ventilation placed in high heat zones to allow air to flow through to the body, improving breathability and keeping the wearer cool and comfortable.



## KNEE PAD POCKETS

In built provision for knee pads to be inserted into the pants and held in place.



## CTE3

Reinforced durability, 3x the abrasive resistance of base fabric.



## LIGHTWEIGHT FABRIC

Fabric is lightweight to keep you cool and comfortable.



## DURABLE WATER REPELLENT

Durable water repellent finish sheds water from the garments surface.



## MOISTURE MANAGEMENT

Fabrics designed to keep you dry and comfortable: moisture wicking, quick drying and breathable.



## EASY CARE

Washing and ironing are a breeze for garments featuring the Easy Care icon. You'll look smarter for longer with minimal effort when you choose Easy Care.



## REFLECTEC

Reflective tape used on Hi-vis night garments.



## EXCELLENT UPF RATING

An Ultraviolet Protection Factor (UPF) rating for Ultraviolet Radiation transmitted through a fabric onto the skin. Look for garments with a 50+ rating to be assured of excellent protection. Complies with AS/NZS 4399:2017 Sun Protection Clothing Classification.



## RECYCLED MATERIALS

This product contains recycled materials. Please refer to the product description and features for more details of the recycled components used.



## HI-VIS DAY

A garment that uses hi-vis materials for daytime use only. The hi-vis material must encircle the upper torso. Complies with AS 4602.1:2011 Hi-vis Safety Garments Class Day.\*



## RIPSTOP

Ripstop fabrics have been woven to be highly tear and rip resistant.



### SEAM SEALED

Stitching seams with waterproof fabric to prevent leaking when raining, and maximise waterproof capabilities.



### STRETCH

Features stretch for the ultimate in comfort by allowing for a full range of movement, no matter what the task at hand is.



### THERMAL INSULATION

A barely-there feel with minimal weight, while trapping in the warmth. Thermal insulation while being lightweight.



### TRIPLE STITCHING

Triple stitching assists with the reinforcement of the garment in stress points to make it extra tough and durable.



### WATERPROOF

Garments constructed with waterproof fabrics and have been seam sealed to prevent water penetrating the inside of the garment.



### WATERPROOF 10,000MM H<sub>2</sub>O

A jacket in this range will withstand most downpours as well as heavy snow.



### 3M THINSULATE™

Insulation using 78% recycled polyester from post-consumer waste, giving a new life to resources that might otherwise end up in landfill.



### AUSTRALIAN COTTON

This product is made from Australian cotton, grown by Australian farmers and known for its strength and quality. Hard Yakka proudly supports the Australian cotton industry. You can find products made with Aussie cotton in some of our ranges.



### BETTER COTTON

We partner with Better Cotton to improve cotton farming globally. Better Cotton is sourced via a system of mass balance and is not physically traceable to end products.<sup>1</sup>



### BIONIC-FINISH®

BIONIC-FINISH® Fluorine-free water repellent textile finishing agents for ultimate performance added to repel oil and stains – Registered Trademark of RUDOLF GmbH.



### CORDURA®

Cordura reinforcement offers the ultimate in toughness, standing up to abrasion, tears and scuffs with ease.



### DYNEEMA®

Dyneema® fibre is 15 times stronger than steel, floats on water and is soft as silk. Dyneema® makes your product durable, lightweight and comfortable.



### REPREVE®

The world's trusted manufacturer of recycled polyester fibre, made from 100% certified post-consumer recycled plastic bottles.



### SUPERCREASE®

We know it's important to look good no matter what the day throws at you. Hard Yakka garments treated with Supercrease will ensure you look as polished and sharp at the end of the day as you did at the start of the day.

# FOOTWEAR ICONS GUIDE



## 30 DAY COMFORT GUARANTEE

Our workboots have been engineered to provide maximum comfort. After a careful study of the Australian foot anatomy, we have designed Hard Yakka boots with a wider last, sole and toe cap. We are so confident you will love these boots that they come with a 30-day comfort guarantee.



## AIRPORT FRIENDLY

No need to take off your boots every time you travel. The entire boot is non-metallic, including the toe caps, which can be x-rayed, will not rust and will not transmit electricity. This allows you to move through security environments without triggering metal detectors.



## ANTI-STATIC

Boots with Anti-Static properties are designed to reduce the build up of excess static electricity by conducting body charge to the ground. This offers a level of protection against ignition hazards such as flammable materials and gases.



## COMPOSITE TOE CAP

50% lighter than steel, non-metallic, non-magnetic, non-conductive and anti-corrosive. Its lightweight construction decreases foot fatigue. All Hard Yakka footwear complies with Australian standards AS.2210.3:2019.



## DUAL DENSITY PU / RUBBER

Hard Yakka rubber outsoles are tough, hard wearing, and oil and grease-resistant. The polyurethane midsole provides additional comfort and energy rebound. Heat resistant to 300 degrees Celsius.



## DUAL DENSITY PU / TPU

Thermoplastic polyurethane outsoles have many useful properties including elasticity and resistance to oil, grease and abrasion. The polyurethane midsole provides additional comfort and energy rebound. Heat resistant to 130 degrees Celsius.



## COMPRESSION MOLDED EVA (CME)

Provides energy rebound with every step. Essential for those who cover a high amount of kilometres on hard surfaces, acting as a shock absorber while still being lightweight.



## LIGHTWEIGHT

Hard Yakka footwear incorporate safety toe caps in a durable design which feels lightweight on the wearers foot, which helps reduce strain due to being on your legs and feet all day.



## MEMORY FOAM FOOTBED

Sensitive to pressure and moulds perfectly around the contours of your foot. The PU bottom layer provides permanent cushioning and shock absorption.



## NANO GRAVITY SAFETY TOE

Carbon Nanofibre Safety Toe Caps are up to 50% lighter than steel and 40% lighter than composite toe caps. Our Nano Cap technology makes our work boots more lightweight, comfortable and stronger while maintaining AS.2210.3:2019 and EU & ASTM safety standards.



## REFLECTIVE

Beacon Mesh Reflective Technology for Enhanced Visibility in low light conditions.



## STEEL SAFETY TOE CAP

All Hard Yakka footwear complies with Australian standards AS.2210.3:2019



## TOE BUMPER

Added toe protection which helps to increase strength and abrasion resistance.



## WOMEN'S SPECIFIC FIT

Genuine women's fit.

# FOOTWEAR LEATHERS

## ONE OF THE MOST IMPORTANT MATERIALS USED IN HARD YAKKA FOOTWEAR IS THE UPPER LEATHER

Hard Yakka leathers are carefully selected for their suitability in industrial safety footwear. The softness and absorbency of leather assists in the control of temperature for feet, an important factor in comfort within an industrial environment. Leather has the ability to breathe through numerous small pores, allowing perspiration to diffuse, while at the same time restricting the entry of fluids, including water.

Leather also provides a significant benefit by trapping air between the fibres and becoming a thermal insulator. This characteristic is a barrier to external heat or cold damp and greatly assists in raising the level of comfort for the wearer.

Another important feature of leather is its flexibility and 'give' as well as the capacity to stretch either in wear or by insertion of devices inside the boot or shoe. Hard Yakka leathers have been selected because of their softness and pliable surface.



### FULL-GRAIN LEATHER

is considered amongst the best quality leather you can buy. Hard Yakka full-grain leather is made using premium cow hides, which is one of the most breathable leathers you can wear.



### NUBUCK LEATHER

is made from full-grain cattle hides that have been sanded or buffed on the grain side to give a slight texture (short fibres) producing a velvet-like surface.

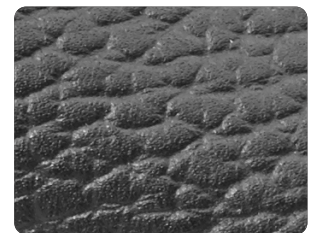
Hard Yakka Nubuck is carefully selected from the thick side of cattle hides ensuring our boots meet 2.2mm thickness requirements for durability.



### SUEDE LEATHER

is made from the underside of cattle hides. Splits from thick cow leather have a woollen finish due to the nature of its fibre.

As suede does not include the tough exterior skin layer, it is less durable but softer than standard full-grain leather.



### RAMBLER LEATHER

is created by applying a pigmented finish to the surface of the leather.

The process is completed by embossing or printing a grain pattern onto the surface.

## HOW TO WORK OUT YOUR SHOE SIZE

MEN'S <small>EEE fit</small>																					
AUS/UK	3	4	5	5.5	6	6.5	7	7.5	8	8.5	9	9.5	10	10.5	11	11.5	12	13	14	15	16
USA	4	5	6	6.5	7	7.5	8	8.5	9	9.5	10	10.5	11	11.5	12	12.5	13	14	15	16	17
European	37	38	39	39.5	40	40.5	41	41.5	42	42.5	43	43.5	44	44.5	45	45.5	46	47	48	49	50









WOMEN'S														
AUS/USA	4	5	5.5	6	6.5	7	7.5	8	8.5	9	9.5	10	10.5	11
UK	2	3	3.5	4	4.6	5	5.5	6	6.5	7	7.5	8	8.5	9
European	35	36	36.5	37	37.5	38	38.5	39	39.5	40	40.5	41	41.5	42

# PANTS





# PANTS

-  **RIPTOP FABRIC**
-  **4 WAY STRETCH**
-  **QUICK DRY**
-  **BREATHABLE FABRIC**
-  **DURABLE WATER REPELLENT**
-  **CTE3 REINFORCED DURABILITY**
-  **REGULAR FIT**
- 



## Y02205 3056 X-RANGE PANTS

SIZE 72R-112R

COLOURS Desert (DST), Navy (NAV), Black (BLA)

- Main: Stretch Cordura Nylon Riptop, 88% Nylon, 12% Elastane, 160gsm;  
Contrast: CTE3 Reinforcement: 97% Nylon, 3% Elastane, 257gsm
- 4 Way stretch Cordura Nylon micro ripstop fabrication
- Light weight 160gsm fabric
- Quick dry
- CTE3 reinforcement knee panels and pocket trims at high abrasion zones
- Perforated laser hole vent crotch and back knee panels for enhanced cooling airflow
- Inner elasticated waistband with stretch drawstring fastening closure

-  **UPF RATING EXCELLENT 50+**
-  **STRETCH FABRIC**
-  **REGULAR FIT**



## Y02204 3056 TOUGHMAXX WORK PANTS

SIZE 67-112R, 112S-132S (S available in NAV only)

COLOURS Desert (DST), Navy (NAV), Black (BLA)

- Main fabric: 98% Cotton, 2% Elastane, 270gsm  
Contrast fabric: 60% Cotton, 38% Polyester, 2% Elastane 260gsm
- Stretch fabrication for enhanced movement
- Elasticated waistband with belt loops and drawstring fastening
- Zip front closure
- Double layer knee panels
- Contrast canvas fabric on pocket trim and knees
- Crotch gusset with twin needle stitching
- Side Utility workwear cargo pockets
- Back welt pockets
- Tradie ruler pocket

-  **WOMEN'S SPECIFIC FIT**
-  **MOISTURE MANAGEMENT**
-  **STRETCH FABRIC**
-  **RECYCLED MATERIALS**
-  **REGULAR FIT**



## Y08061 WOMEN'S 3056 X-RANGE LEGGINGS

SIZE 8-16

COLOURS Black (BLA)

- Main fabric: 81% Nylon, 19% Elastane, 240gsm;  
Reinforcement fabric: 88% Nylon, 12% Elastane
- Made with 81% Nylon from pre-consumer waste materials, including reclaimed manufacturing waste
- Double Peached finish, soft hand feel
- Reinforcement fabric strategic placement at knee and buttocks area
- Wicking with high stretch fabric properties
- Slant Deep side pockets with nylon trim at top of pocket edge on either side of the leg
- Pen/ Pencil pocket on side pocket
- Coin pocket on waistband seam drawstring fasten closure

-  **UPF RATING EXCELLENT 50+**
-  **STRETCH FABRIC**
-  **RIPTOP FABRIC**
-  **CTE3 REINFORCED DURABILITY**
-  **RECYCLED MATERIALS**
-  **SLIM FIT**
- 



## Y02441 3056 RAPTOR ACTIVE PANTS

SIZE 67R-112R

COLOUR Desert (DST), Navy (NAV), Black (BLA)

- Main Fabric: Ripstop 60% Cotton, 38% Polyester, 2% Elastane, 240gsm; Reinforcement: Oxford 2 way stretch, 97% Nylon, 3% Elastane, 257gsm
- Fabric is made with 38% REPVEVE®, a performance fibre. REPVEVE® is made from recycled polyester from post-consumer waste materials, including recycled plastic bottles
- Active Fit waistband for enhanced movement and comfort
- Reinforced CTE3 fabrication technology knee panels and pocket trims for maximum abrasion resistance
- CTE3 reinforced back heel guard
- Reinforced stitching on high stress seams
- Ergonomic pocketing system
- Heavy duty utility belt loops



## Y02717 3056 RAPTOR ACTIVE CUFFED PANTS

SIZES 67R–112R

COLOURS Desert (DST), Navy (NAV), Black (BLA)

- Main Fabric: Ripstop 60% Cotton, 38% Polyester, 2% Elastane, 240gsm; Reinforcement: Oxford 2 way stretch, 97% Nylon, 3% Elastane, 257gsm
- Fabric is made with 38% REPVE®, a performance fibre. REPVE® is made from recycled polyester from post-consumer waste materials, including recycled plastic bottles
- Active Fit Waistband designed with a built-in, expandable waist, offering greater comfort, mobility and fit
- CTE3 Reinforcement on key abrasion zones such as knees and pockets
- Durable, tough metal zipper & tack button

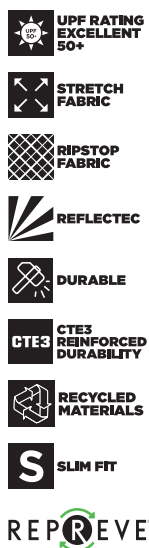


## Y08382 WOMEN'S 3056 RAPTOR ACTIVE CUFFED PANTS

SIZES 6–18

COLOURS Desert (DST), Navy (NAV), Black (BLA)

- Main Fabric: Ripstop 60% Cotton, 38% Polyester, 2% Elastane, 240gsm; Reinforcement: Oxford 2 way stretch, 97% Nylon, 3% Elastane, 257gsm
- Fabric is made with 38% REPVE®, a performance fibre. REPVE® is made from recycled polyester from post-consumer waste materials, including recycled plastic bottles
- Active Fit Waistband designed with a built-in, expandable waist, offering greater comfort, mobility and fit
- CTE3 Reinforcement on key abrasion zones such as knees and pockets
- Durable, tough metal zipper & tack button



## Y02586 3056 RAPTOR ACTIVE CUFFED TAPED PANTS

SIZES 67R–112R

COLOURS Navy (NAV)

- Main Fabric: Ripstop 60% Cotton, 38% Polyester, 2% Elastane, 240gsm; Reinforcement: Oxford 2 way stretch, 97% Nylon, 3% Elastane, 257gsm
- Fabric is made with 38% REPVE®, a performance fibre. REPVE® is made from recycled polyester from post-consumer waste materials, including recycled plastic bottles
- Active fit waistband
- Y-LAB tactical pocket systems
- Reinforced CTE3 panels for abrasion + tear resistance
- Elastic cuff at ankle
- Reflective double hoop segmented stretch tape



## Y08411 WOMEN'S 3056 RAPTOR ACTIVE CUFFED TAPED PANTS

SIZES 6–22

COLOURS Navy (NAV)

- Main Fabric: Ripstop 60% Cotton, 38% Polyester, 2% Elastane, 240gsm; Reinforcement: Oxford 2 way stretch, 97% Nylon, 3% Elastane, 257gsm
- Fabric is made with 38% REPVE®, a performance fibre. REPVE® is made from recycled polyester from post-consumer waste materials, including recycled plastic bottles
- Active fit waistband
- Y-LAB tactical pocket systems
- Reinforced CTE3 panels for abrasion & tear resistance
- Reflective double hoop segmented stretch tape
- Elastic cuff at ankle

# PANTS



With Dyneema®



## Y03400 3056 DYNEEMA® SLIM FIT HEAVY DUTY WORK JEANS

SIZES 77R-107R

COLOURS Black (BLA), Indigo (IND)

- Black: 12oz, 67% cotton, 28% polyester, 4% polyethylene, 1% elastane; Indigo: 74% cotton, 23% polyester, 2% polyethylene, 1% elastane
- Dyneema® denim is designed to be a strong and durable fabric
- Reinforced internal pocket bags
- Durable, tough metal zipper, tack button and rivets
- Slim and articulated fit, tapered from knee to hem
- Multiple pockets for all storage needs



## Y08812 WOMEN'S 3056 GLADIATOR DENIM JEGGINGS

SIZES 6-22

COLOURS Black (BLK)

- 80% Cotton, 18% Polyester, 2% Elastane: 3/1 RHT 9oz
- Stretch light weight denim
- Super soft finish
- Hard Yakka logo with embossed comfort waistband
- Smart device and strategic reach pocket system
- Back yoke lock away zip pocket
- Hard Yakka Womens Arc1 body shaping



## Y08227 WOMEN'S 3056 DENIM JEGGINGS

SIZES 6-22

COLOURS Indigo (IND), Black (BLA)

- 80% cotton, 18% polyester, 2% elastane, 9oz
- Light weight stretch, 9oz denim
- Contoured Slim to Skinny Fit
- Soft comfort wash hand feel
- Reinforced triple needle stitching
- RHS utility tool pocket
- LHS ruler pocket
- Double layer back pocket



## Y08302 WOMEN'S 3056 TAPED DENIM JEGGINGS

SIZES 6-22

COLOURS Indigo (IND), Black (BLK)

- Fabric Indigo: 80% Cotton 18% Polyester 2% Elastane: 3/1 RHT 9oz  
Black On Black Weave: 80% Cotton 18% Polyester 2% Elastane: 3/1 RHT 9oz
- Contoured Slim top Skinny Fit
- Soft comfort wash hand feel
- Reflective double hoop segmented stretch tape
- Reinforced triple needle stitching
- RHS utility pocket
- LHS ruler pocket
- Double layer back pocket

-  **ADVANCED STRETCH**
-  **CTE3 REINFORCED DURABILITY**
-  **RECYCLED MATERIALS**
-  **ACTIVE FIT**
- 



## Y02552 3056 ACTIVE FLEECE CUFFED JOGGER

SIZES S-2XL

COLOURS Grey (GRY), Black (BLA)

- 65% Polyester, 35% Cotton, 320gsm
- Cotton brushed fleece fabric is made with 65% REPVE®. REPVE® is a performance fibre made from recycled polyester from post-consumer waste materials, including recycled plastic bottle
- CTE3 Reinforced knee panels and pocket trims
- Elasticated drawstring comfort waistband
- Rib cuffed ankle



-  **UPF RATING EXCELLENT 50+**
-  **STRETCH FABRIC**
-  **REFLECTEC**
-  **RECYCLED MATERIALS**
-  **SLIM FIT**
- 



## Y02855 3056 STRETCH CANVAS TAPED CARGO PANTS

SIZE 67R-112R, 87S-132S

COLOUR Desert (DST), Navy (NAV), Black (BLA)

- 260gsm, 60% cotton/38% polyester/2% elastane
- Fabric is made with 38% REPVE®, a performance fibre. REPVE® is made from recycled polyester from post-consumer waste materials, including recycled plastic bottle
- Stretch canvas for comfort and freedom of movement
- Reinforced internal pocket bags
- Durable, tough metal zipper & tack button
- Slim and articulated fit, tapered from knee to hem
- Reinforced double layer knee
- Multiple pockets for all storage needs

OUR BEST SELLING CONSTRUCTION PANT!

-  **UPF RATING EXCELLENT 50+**
-  **STRETCH FABRIC**
-  **RECYCLED MATERIALS**
-  **SLIM FIT**
- 



## Y02880 3056 CANVAS CARGO PANTS

SIZE 77R-112R, 87S-132S

COLOUR Khaki (KHA), White (WHI), Desert (DST), Navy (NAV), Black (BLA)

- 260gsm, 60% cotton/38% polyester/2% elastane
- Fabric is made with 38% REPVE®, a performance fibre. REPVE® is made from recycled polyester from post-consumer waste materials, including recycled plastic bottle
- Stretch canvas for comfort and freedom of movement
- Reinforced internal pocket bags
- Durable, tough metal zipper & tack button
- Slim and articulated fit, tapered from knee to hem
- Reinforced double layer knee
- Multiple pockets for all storage needs

# PANTS



## Y02255 3056 RIPSTOP UTILITY COTTON CARGO PANTS

SIZE 72R–102R

**COLOUR** Desert (DST), Military Green (MLG), Charcoal (CHA), Navy (NAV), Black (BLA)

- 240gsm, 60% cotton/38% polyester/2% elastane blend ripstop
- Fabric is made with 38% REP REVE®, a performance fibre.  
REP REVE® is made from recycled polyester from post-consumer waste materials, including recycled plastic bottle
- Reinforced internal pocket bags
- Durable, tough metal zipper, tack button and rivets
- Slim and articulated fit, tapered from knee to hem
- Seasonal colour highlights on internal waistband and hem binding
- Multiple pockets for all storage needs



## Y08930 WOMEN'S 3056 RIPSTOP SLIM FIT CARGO PANTS

SIZES 6–18

**COLOURS** Desert (DST), Navy (NAV), Black (BLA)

- 240gsm, 60% Cotton/38% Polyester/2% Elastane Blend Ripstop
- Fabric is made with 38% REP REVE®, a performance fibre.  
REP REVE® is made from recycled polyester from post-consumer waste materials, including recycled plastic bottle
- Women's slim fit
- Reinforced internal pocket bags
- Durable, tough metal zipper, tack button and rivets
- Slim and articulated fit, tapered from knee to hem
- Seasonal colour highlights on internal waistband and hem binding
- Multiple pockets for all storage needs



## Y02340 3056 RIPSTOP UTILITY CUFFED COTTON CARGO PANTS

SIZE 72R–102R

**COLOUR** Navy (NAV), Desert (DST), Black (BLA)

- 240gsm, 60% cotton/38% polyester/2% elastane ripstop
- Fabric is made with 38% REP REVE®, a performance fibre.  
REP REVE® is made from recycled polyester from post-consumer waste materials, including recycled plastic bottle
- Reinforced internal pocket bags
- Durable, tough metal zipper, tack button & rivets
- Slim & articulated fit, tapered from knee to hem
- Seasonal colour highlights on internal waistband
- Elastic cuff on hem
- Multiple storage pockets



## Y02906 LEGENDS LIGHTWEIGHT COTTON CARGO PANTS

SIZE 72R–112R, 87S–132S, 74L–94L

**COLOUR** Navy (NAV)

- 260gsm, 100% cotton duck weave, lightly washed pre-shrunk canvas
- Multiple storage pockets with provisions for mobile phone
- Ruler pocket containing extra tool & pencil partition, plus concealed gadget pocket on waistband
- Cordura reinforcement on key abrasion zones such as knees and pockets
- Nylon zip fly & plastic button closure
- All stress points bar-tacked & reinforced internal pocket bags



-  UPF RATING EXCELLENT 50+
-  TRIPLE STITCHING
-  KNEE PAD POCKETS
-  RELAXED FIT
- 







## Y02202 LEGENDS HEAVY DUTY COTTON CARGO PANTS

SIZE 77R–112R, 87S–132S, 74L–94L (L available in BLA, GRN, KHA, NAV only)

COLOUR Khaki (KHA), Charcoal/Charcoal (CAC), Green (GRN), Navy (NAV), Black (BLA)

- 340gsm, 100% cotton Panama weave with silicone wash
- Articulated fit for comfort & freedom of movement
- Cordura reinforcement on key abrasion zones such as knees and pockets
- Triple stitched for added strength
- Multiple storage pockets
- Knee pad pocket



-  WOMEN'S SPECIFIC FIT
-  UPF RATING EXCELLENT 50+
-  TRIPLE STITCHING
-  KNEE PAD POCKETS
-  RELAXED FIT
- 


## Y08079 WOMEN'S LEGENDS HEAVY DUTY CARGO PANTS

SIZE 8–20

COLOUR Navy (NAV)

- 340gsm, 100% cotton Panama weave with silicone wash
- Articulated fit for comfort and movement
- Cordura reinforcement on key abrasion zones such as knees and pockets
- Super tough with reinforcement and triple stitching where you need it most
- Multiple pockets have every storage requirement covered – never misplace your phone, ruler or pen again
- Triple stitched for added strength



-  UPF RATING EXCELLENT 50+
-  TRIPLE STITCHING
-  KNEE PAD POCKETS
-  RELAXED FIT
- 



## Y02210 LEGENDS XTREME HEAVY DUTY COTTON CARGO PANTS

SIZE 77R–112R, 87S–117S, 74L–94L (L available in NAB only)

COLOUR Khaki/Black (KHB), Navy/Black (NAB)

- 340gsm, 100% cotton Panama weave with silicone wash
- Articulated fit for comfort & freedom of movement
- Cordura reinforcement on key abrasion zones such as knees and pockets
- Swing away pockets multiply storage for easy access to tools
- Triple stitched for added strength



-  UPF RATING EXCELLENT 50+
-  STRETCH FABRIC
-  KNEE PAD POCKETS
-  CTE3 REINFORCED DURABILITY
-  SLIM FIT
- 

## Y02740 LEGENDS SLIM STRETCH PANTS

SIZES 72R–112R, 87S–132S

COLOURS Khaki (KHA), Navy (NAV), Black (BLA)

- 260gsm, 60% cotton/38% polyester/2% elastane canvas
- Slim articulated modern fit
- 8 utility pockets
- Stretch CTE3 reinforcement at wear zones
- Unisex fit

# PANTS



UPF RATING  
EXCELLENT  
50+



TRIPLE  
STITCHING



KNEE PAD  
POCKETS



RELAXED FIT

CORDURA



STRETCH  
FABRIC



SLIM FIT



## Y03041 LEGENDS HEAVY DUTY COTTON CARGO JEANS (WITH KNEE PAD OPTION)

SIZE 77R–112R, 87S–117S

COLOUR Blue/Charcoal (BUB)

- 490gsm, 100% cotton denim
- Super tough with triple stitching for reinforcement
- Heavy duty denim
- Reinforced knees include provision for knee pads

## Y03105 HERITAGE SLIM FIT WORK JEANS

SIZE 72R–102R

COLOUR Indigo (IND)

- 11oz Denim: Pure indigo 99% Cotton, 1% Elastane
- Denim finished using Ozone based technology which uses less water and energy than traditional denim finishing methods
- Heritage style hardware shank and rivet hardware
- Double layer lower back pocket for durability
- Heavy duty wider belt loops
- Reinforced triple needle stitching
- RHS utility tool pocket





**mustang**  
JEANS

## Y43245 MUSTANG REGULAR FIT STRETCH WORK JEANS - STONEWASH

SIZE 72R–122R, 84S–142S

COLOUR Stonewash (STW)

- Stonewashed Pre-shrunk Stretch Denim, 99% Cotton, 1% Elastane, 13.1oz
- Plain front 5 pocket basic design jean
- 6 belt loops
- Brass zip fly
- Loops, hip pockets and stress points bar-tacked, including fly
- Riveted front pockets and fob pocket
- Heavyweight poly/cotton pocketing
- Prewashed to reduce residual shrinkage associated with denim and to provide fabric comfort



**mustang**  
JEANS

## Y43246 MUSTANG REGULAR FIT STRETCH WORK JEANS - BLACK

SIZE 72R–122R, 87S–142S

COLOUR Black (BLA)

- Stonewashed Pre-shrunk Stretch Denim, 98% Cotton, 2% Elastane, 12.5oz
- Plain front 5 pocket basic design jean
- 6 belt loops
- Brass zip fly
- Loops, hip pockets and stress points bar-tacked, including fly
- Riveted front pockets and fob pocket
- Heavyweight poly/cotton pocketing
- Prewashed to reduce residual shrinkage associated with denim and to provide fabric comfort



**mustang**  
JEANS

## Y43247 MUSTANG REGULAR FIT STRETCH WORK JEANS - INDIGO

SIZE 72R–122R, 87S–122S

COLOUR Navy (NAV)

- Stonewashed Pre-shrunk Stretch Denim, 99% Cotton, 1% Elastane, 425gsm
- Plain front 5 pocket basic design jean
- 6 belt loops
- Brass zip fly
- Loops, hip pockets and stress points bar-tacked, including fly
- Riveted front pockets and fob pocket
- Heavyweight poly/cotton pocketing
- Prewashed to reduce residual shrinkage associated with denim and to provide fabric comfort



**mustang**  
JEANS

## Y43434 MUSTANG REGULAR FIT STRETCH WORK JEANS - BLUE/BLACK

SIZE 77R–107R, 87S–142S

COLOUR Black/Red (BRE)

- Stonewashed Pre-shrunk Stretch Denim, 80% Cotton, 18% Polyester, 2% Elastane, 305gsm
- Plain front 5 pocket basic design jean
- 6 belt loops
- Brass zip fly
- Loops, hip pockets and stress points bar-tacked, including fly
- Riveted front pockets and fob pocket
- Heavyweight poly/cotton pocketing

# CORE PANTS



## Y02575 CORE CARGO COTTON DRILL TAPED PANTS

SIZE 72R–112R, 87S–132S, 79L–94L

COLOUR Navy (NAV)

- 270gsm, 100% cotton drill
- Slanted front pockets
- Darted back waist for comfort fit
- Twin back hip pockets
- Cargo pocket with box pleat and touch tape closure
- Utility, ruler pocket and pen pocket on the RHS
- ReflecTec tape

By choosing our cotton products, you're supporting our investment in Better Cotton's mission. These products are sourced via a system of mass balance and therefore may not contain Better Cotton.



## Y02615 CORE BIOMOTION TAPED COTTON DRILL PANTS

SIZE 72R–112R, 87S–132S, 74L–94L

COLOUR Navy (NAV)

- 290gsm, pre-shrunk 100% cotton drill
- Red internal waistband binding and stitching
- Reinforced internal pocket bags with signature pocket bag print
- Relaxed fit with front pleat
- Updated trims
- Multiple pockets for all storage needs
- ReflecTec 50mm reflective tape

By choosing our cotton products, you're supporting our investment in Better Cotton's mission. These products are sourced via a system of mass balance and therefore may not contain Better Cotton.



## Y08380 WOMEN'S CORE BIOMOTION TAPED CARGO DRILL PANTS

SIZE 6–24

COLOUR Navy (NAV)

- 270gsm, 100% cotton drill
- Slanted front pockets
- Darted back waist for comfort fit
- Twin back hip pockets
- Cargo pocket with box pleat and touch tape closure
- Utility, ruler pocket and pen pocket on the RHS
- ReflecTec tape

By choosing our cotton products, you're supporting our investment in Better Cotton's mission. These products are sourced via a system of mass balance and therefore may not contain Better Cotton.



## Y02540 CORE COTTON DRILL TAPED PANTS

SIZE 72R–112R, 87S–132S, 79L–94L

COLOUR Navy (NAV)

- 270gsm, 100% cotton drill
- Pleat Front
- Slanted front pockets
- Twin back hip pockets
- Fob pocket RHS
- Darted back waist for comfort fit
- Phone pocket on RHS with touch tape closure
- ReflecTec tape

By choosing our cotton products, you're supporting our investment in Better Cotton's mission. These products are sourced via a system of mass balance and therefore may not contain Better Cotton.



## Y02501 CORE PLEATED FRONT HEAVYWEIGHT COTTON DRILL PANTS

SIZE 72R–122R, 87S–132S, 74L–94L

COLOUR Khaki (KHA), Green (GRN), Navy (NAV)

- 290gsm, pre-shrunk 100% cotton drill
- Red internal waistband binding and stitching
- Reinforced internal pocket bags with signature pocket bag print
- Relaxed fit with pleat front
- Multiple pockets for all storage needs

By choosing our cotton products, you're supporting our investment in Better Cotton's mission. These products are sourced via a system of mass balance and therefore may not contain Better Cotton.



## Y02500 CORE HEAVYWEIGHT CARGO COTTON DRILL PANTS

SIZE 67R–122R, 87S–132S, 74L–94L

COLOUR Khaki (KHA), Green (GRN), Navy (NAV), Black (BLA)

- 290gsm, pre-shrunk 100% cotton drill
- Red internal waistband binding and stitching
- Reinforced internal pocket bags with signature pocket bag print
- Relaxed fit with pleat front
- Multiple pockets for all storage needs including bellowed cargo pocket
- Nylon zip fly & plastic button closure

By choosing our cotton products, you're supporting our investment in Better Cotton's mission. These products are sourced via a system of mass balance and therefore may not contain Better Cotton.



## Y08850 WOMEN'S CORE HEAVYWEIGHT COTTON CARGO DRILL PANTS

SIZE 8–22

COLOUR Navy (NAV)

- 290gsm, preshrunk 100% cotton drill
- Red internal waistband binding and stitching
- Reinforced internal pocket bags with signature pocket bag print
- Relaxed women's fit
- Multiple pockets for all storage needs
- Utility & Ruler Pockets

By choosing our cotton products, you're supporting our investment in Better Cotton's mission. These products are sourced via a system of mass balance and therefore may not contain Better Cotton.



## Y02300 CORE VENTED COTTON CARGO PANTS

SIZE KHA: 72R–112R, 87S–132S

NAV: 72R–112R, 87S–132S, 74L–94L

CHA: 77R–87R, 117S–132S

COLOUR Khaki (KHA), Charcoal (CHA), Navy (NAV)

- 235gsm, 100% cotton dobby
- Cotton is naturally breathable and durable
- 100% polyester mesh with antimicrobial treatment to fight odour causing bacteria
- Reinforced, mesh lined pocket bags for added comfort without added weight
- Multiple pockets for storage requirements

By choosing our cotton products, you're supporting our investment in Better Cotton's mission. These products are sourced via a system of mass balance and therefore may not contain Better Cotton.

# CORE PANTS



## Y02570 CORE CARGO COTTON DRILL PANTS

SIZE 72R–112R, 87S–132S, 79L–94L

COLOUR Navy (NAV)

- 270gsm, 100% cotton drill
- Slanted front pockets
- Darted back waist for comfort fit
- Twin back hip pockets
- Cargo pocket with box pleat and touch tape closure
- Utility, ruler pocket and pen pocket RHS

By choosing our cotton products, you're supporting our investment in Better Cotton's mission. These products are sourced via a system of mass balance and therefore may not contain Better Cotton.



## Y08840 WOMEN'S CORE COTTON DRILL PANTS

SIZE 6–24

COLOUR Navy (NAV)

- 270 gsm, 100% Cotton Drill
- Modern Women's fit
- Multifunctional and fob pockets
- Slanted front pockets with facing
- Darted back waist and knife pleat at front
- Twin back hip pockets
- Phone pocket on wearers RHS outleg with touch tape closure

By choosing our cotton products, you're supporting our investment in Better Cotton's mission. These products are sourced via a system of mass balance and therefore may not contain Better Cotton.



## Y02530 CORE PLEATED FRONT COTTON DRILL PANTS

SIZE 72R–112R, 87S–132S, 79L–94L

COLOUR Navy (NAV)

- 270gsm, 100% cotton drill
- Pleat Front
- Slanted front pockets
- Twin back hip pockets
- Fob pocket RHS
- Darted back waist for comfort fit
- Phone pocket on RHS with touch tape closure

By choosing our cotton products, you're supporting our investment in Better Cotton's mission. These products are sourced via a system of mass balance and therefore may not contain Better Cotton.



## Y08381 WOMEN'S CORE CARGO DRILL PANTS

SIZE 6–24

COLOUR Navy (NAV)

- 270gsm, 100% cotton drill
- Slanted front pockets
- Darted back waist for comfort fit
- Twin back hip pockets
- Cargo pocket with box pleat and touch tape closure
- Utility, ruler pocket and pen pocket RHS

By choosing our cotton products, you're supporting our investment in Better Cotton's mission. These products are sourced via a system of mass balance and therefore may not contain Better Cotton.



## Y02965 CORE LIGHTWEIGHT CARGO COTTON DRILL TAPED PANTS

SIZE 72R–112R, 87S–132S, 74L–94L

COLOUR Navy (NAV)

- 190 gsm, 100% Cotton Drill
- Reinforced bar tacks on pockets
- Box pleated cargo pocket
- Wide belt loops, double layered knee
- Nylon zipper, plastic button, ruler and multifunctional pockets
- ReflecTec tape

By choosing our cotton products, you're supporting our investment in Better Cotton's mission. These products are sourced via a system of mass balance and therefore may not contain Better Cotton.



## Y02960 CORE LIGHTWEIGHT CARGO COTTON DRILL PANTS

SIZE 72R–112R, 87S–132S, 74L–94L

COLOUR Navy (NAV)

- 190 gsm, 100% Cotton Drill
- Reinforced bar tacks on pockets
- Box pleated cargo pocket
- Double layered knee
- Wide belt loops
- Nylon zipper, plastic button, ruler and multifunctional pockets

By choosing our cotton products, you're supporting our investment in Better Cotton's mission. These products are sourced via a system of mass balance and therefore may not contain Better Cotton.



## Y02596 CORE STRETCH PANTS

SIZES KHA: 72R–112R, 92S–132S, 74L–94L  
NAV & BLA: 72R–112R, 87S–132S, 74L–94L

COLOUR Khaki (KHA), Navy (NAV), Black (BLA)

- 270gsm, 98% Cotton 2% Elastane
- Reinforced bar tacks on pockets
- Fob pocket for coins
- Deep side pockets and twin back hip pockets

By choosing our cotton products, you're supporting our investment in Better Cotton's mission. These products are sourced via a system of mass balance and therefore may not contain Better Cotton.



## Y02597 CORE STRETCH CARGO PANTS

SIZES 72R–112R, 87S–132S, 74L–94L

COLOUR Khaki (KHA), Navy (NAV), Black (BLA)

- 270gsm, 98% Cotton 2% Elastane
- Reinforced bar tacks on pockets
- Fob pocket for coins
- Deep cargo pockets - Velcro closure
- Pen pocket on wearers RHS

By choosing our cotton products, you're supporting our investment in Better Cotton's mission. These products are sourced via a system of mass balance and therefore may not contain Better Cotton.

# CORE PANTS



## Y02411 CORE STRETCH CUFFED CARGO TAPED PANTS

SIZES 72R–112R

COLOURS Navy (NAV)

- 270gsm, 98% Cotton 2% Elastane
- Key loop on wearers LHS front
- Darted back waist
- Fob pocket on wearers RHS
- Twin back hip pockets
- Cargo pocket with flap & tape closure on LHS outer leg
- Ruler, utility and pen pockets
- Reflective tape above & below knee

By choosing our cotton products, you're supporting our investment in Better Cotton's mission. These products are sourced via a system of mass balance and therefore may not contain Better Cotton.

## Y03513 CORE ENZYME WASHED STRAIGHT LEG TAPED JEANS

SIZE 77R–107R, 87S–132S

COLOUR Navy (NAV)

- 490gsm, 100% cotton denim
- Enzyme washed
- Straight leg cut with traditional 5 pocket jean styling
- Reinforced & riveted stress points for durability
- Metal zip fly & stud button
- 50mm reflective tape hoops

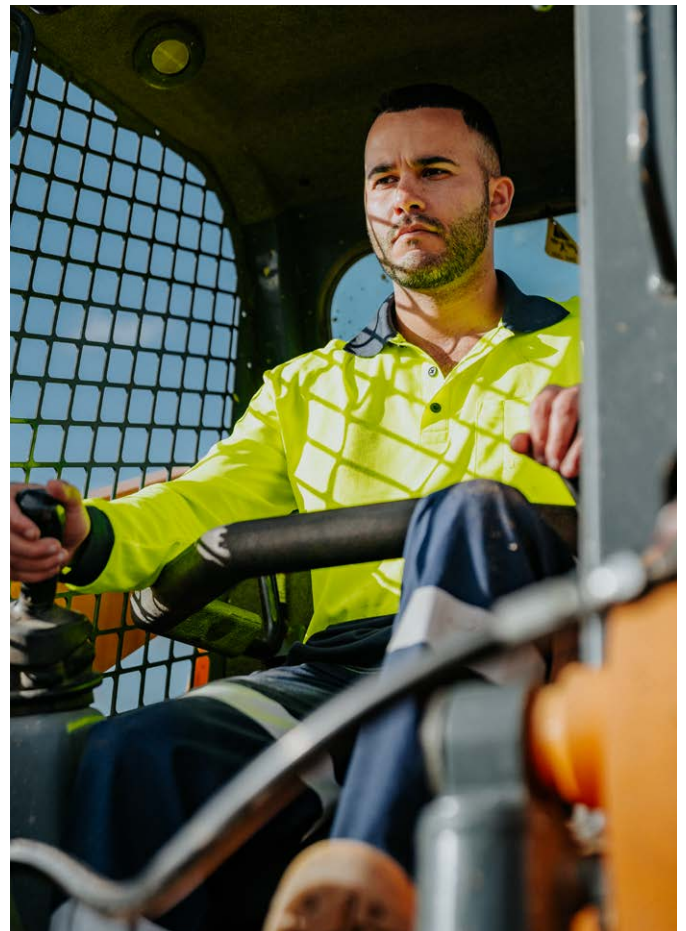


## Y02594 CORE PERMANENT PRESS PANT

SIZE 72R–107R, 87S–132S, 74L–94L

COLOUR Navy (NAV), Midnight (MDN), Black (BLA)

- 245gsm, 80% polyester/20% viscose fabric
- BIONIC-FINISH® added to repel oil and stains – Registered Trademark of RUDOLF GmbH
- Supercrease® finish
- Invisible expandable waistband
- Plain front
- Jetted back hip pockets
- Side pockets and fob pocket
- Nylon zip fly & plastic button closure





## Y03514 CORE HEAVY DUTY WASHED JEANS

SIZE 77R–107R, 87S–132S, 74L–94L

COLOUR Navy (NAV)

- 490gsm, 100% cotton denim
- Enzyme washed
- Straight leg cut with traditional 5 pocket jean styling
- Reinforced & riveted stress points for durability
- Metal zip fly & stud button



## Y44610 CORE STRAIGHT LEG STRETCH JEANS

SIZE 72R–102R, 87S–112S, 74L–89L

COLOUR Navy (NAV)

- 425gsm, 98% cotton/2% elastomer denim
- Lightly washed
- Straight leg cut with traditional 5 pocket jean styling
- Reinforced & riveted stress points
- Metal zip fly & stud button closure



## Y03875 CORE MOLESKIN HEAVY DUTY WORK JEANS

SIZE 77R–102R, 87S–122S

COLOUR Navy (NAV)

- 490gsm, 100% cotton weft sateen brushed fabric
- Straight leg cut with traditional 5 pocket jean styling
- Waistband with six belt loops
- Reinforced stress points
- Plastic zip fly & button closure



## Y03876 CORE MOLESKIN PLAIN FRONT WORK JEANS

SIZE 77R–102R, 87S–122S

COLOUR Navy (NAV)

- 490gsm, 100% cotton weft sateen brushed fabric
- Waistband with seven belt loops & button closure
- Straight leg styling
- Two side pockets & two jetted hip back pockets
- Plastic zip fly & button closure

# SHORTS





Hard  
Yakka

# NEW 3056 X-RANGE SHORTS

## Y05166 3056 X-RANGE SHORT SHORTS

SIZE 72R-112R

COLOUR Desert (DST), Navy (NAV), Black (BLA)

- Main fabric: Stretch Nylon Riptop, 88% Nylon, 12% Elastane, 160gsm  
CTE3 Reinforcement: 97% Nylon 3% Elastane, 257gsm
- Cordura Nylon micro ripstop fabrication
- Light weight 160gsm fabric
- Quick dry
- CTE3 reinforcement pocket trims at high abrasion zones
- Perforated laser hole vent crotch panel for enhanced cooling airflow
- Inner elasticated waistband with stretch drawstring fastening closure
- Hidden button fly zip fastening closure
- No bounce smart phone pocket
- Keys & airpod zip pocket
- Tradie ruler pocket
- Mesh pocket bags
- DWR - Durable Water Repellent finish added to fabric



4 WAY  
STRETCH



RIPSTOP  
FABRIC



QUICK DRY



BREATHABLE  
FABRIC



DURABLE  
WATER  
REPELLENT



CTE3  
REINFORCED  
DURABILITY



REGULAR FIT



CORDURA



## Y05167 3056 X-RANGE MID LENGTH SHORTS

SIZE 72R-112R

COLOUR Desert (DST), Navy (NAV), Black (BLA)

- Main fabric: Stretch Nylon Riptop, 88% Nylon, 12% Elastane, 160gsm  
CTE3 Reinforcement: 97% Nylon 3% Elastane, 257gsm
- Cordura Nylon micro ripstop fabrication
- Light weight 160gsm fabric
- Quick dry
- CTE3 reinforcement pocket trims at high abrasion zones
- Perforated laser hole vent crotch panel for enhanced cooling airflow
- Inner elasticated waistband with stretch drawstring fastening closure
- Hidden button fly zip fastening closure
- No bounce smart phone pocket
- Ergonomic main utility cargo workwear tooling pocket system
- Heavy duty left thigh main zip fastening pocket
- Keys & airpod zip pocket
- Tradie ruler pocket
- Mesh pocket bags
- DWR - Durable Water Repellent finish added to fabric



4 WAY  
STRETCH



RIPSTOP  
FABRIC



QUICK DRY



BREATHABLE  
FABRIC



DURABLE  
WATER  
REPELLENT



CTE3  
REINFORCED  
DURABILITY



REGULAR FIT



CORDURA



# NEW TOUGHMAXX SHORTS

## Y05164 3056 TOUGHMAXX WORK SHORT SHORTS

SIZE 67R-112R

COLOUR Desert (DST), Navy (NAV), Black (BLA)

- Main fabric: 98% Cotton, 2% Elastane, 270gsm  
Contrast: 60% Cotton, 38% Polyester, 2% Elastane 260gsm
- Stretch fabrication for enhanced movement
- Elasticated waistband with belt loops and drawstring fastening
- Contrast canvas fabric on pocket trims
- Zip front closure
- Crotch gusset with twin needle stitching
- Back welt pockets
- Tradie ruler pocket



## Y05165 3056 TOUGHMAXX WORK MID LENGTH SHORTS

SIZE 67R-112R

COLOUR Desert (DST), Navy (NAV), Black (BLA)

- Main fabric: 98% Cotton, 2% Elastane, 270gsm  
Contrast fabric: 60% Cotton, 38% Polyester, 2% Elastane 260gsm
- Stretch fabrication for enhanced movement
- Elasticated waistband with belt loops and drawstring fastening
- Zip front closure
- Contrast canvas fabric on pocket trims
- Crotch gusset with twin needle stitching
- Side Utility workwear cargo pockets
- Back welt pockets
- Tradie ruler pocket
- UPF 50+ Rating



# SHORTS



## Y05161 3056 RAPTOR ACTIVE SHORT SHORTS

SIZE 67R–112R

COLOURS Desert (DST), Navy (NAV), Black (BLA)

- Ripstop: 60% cotton, 38%, polyester, 2% elastane, 240gsm; CTE3 Reinforcement: Oxford 2 way stretch, 97% Nylon 3% Elastane, 257gsm
- Fabric is made with 38% REPREVE®, a performance fibre. REPREVE® is made from recycled polyester from post-consumer waste materials, including recycled plastic bottles
- Active fit waistband
- Tactical pocket systems
- Reinforced CTE3 panels for abrasion and tear resistance
- Reflective logo prints
- Crotch gusset for flexibility
- 4.7 inch in-leg

## Y05160 3056 RAPTOR ACTIVE MID LENGTH SHORTS

SIZE 67R–112R

COLOURS Desert (DST), Navy (NAV), Black (BLA)

- Main Fabric: Ripstop 60% Cotton, 38% Polyester, 2% Elastane, 240gsm; Reinforcement: Oxford 2 way stretch, 97% Nylon, 3% Elastane, 257gsm
- Fabric is made with 38% REPREVE®, a performance fibre. REPREVE® is made from recycled polyester from post-consumer waste materials, including recycled plastic bottle
- Active Fit waistband for enhanced movement and comfort
- Reinforced CTE3 fabrication technology knee panels and pocket trims for maximum abrasion resistance
- CTE3 reinforced back heel guard
- Reinforced stitching on high stress seams
- Ergonomic pocketing system
- Heavy duty utility belt loops



## Y08497 WOMEN'S 3056 RAPTOR ACTIVE SHORT SHORTS

SIZE 6–22

COLOURS Desert (DST), Navy (NAV), Black (BLA)

- Main Fabric: 60% Cotton / 38% Polyester / 2% Elastane-Ripstop 240gsm; Reinforcement: Oxford 2 way stretch, 97% Nylon 3% Elastane, 257gsm
- Active fit waistband
- Durable ripstop fabric construction with sustainable REPREVE® yarn technology
- Reinforced CTE3 panels for abrasion + tear resistance
- Reflective logo prints

## Y08228 WOMEN'S 3056 RAPTOR ACTIVE MID LENGTH SHORTS

SIZE 6–22

COLOURS Desert (DST), Navy (NAV), Black (BLA)

- Ripstop: 60% cotton, 38%, polyester, 2% elastane, 240gsm; CTE3 Reinforcement: Oxford 2 way stretch, 97% Nylon 3% Elastane, 257gsm
- Fabric is made with 38% REPREVE®, a performance fibre. REPREVE® is made from recycled polyester from post-consumer waste materials, including recycled plastic bottles
- Active fit waistband
- Tactical pocket systems
- Reinforced CTE3 panels for abrasion and tear resistance
- Reflective logo prints
- Crotch gusset for flexibility



## Y05190 3056 CANVAS CARGO SHORTS

SIZE 77R–112R

COLOUR Navy (NAV)

- 260gsm, 60% cotton/38% polyester/2% elastane
- Fabric is made with 38% REPREVE®, a performance fibre. REPREVE® is made from recycled polyester from post-consumer waste materials, including recycled plastic bottle
- Stretch canvas for comfort and freedom of movement
- Reinforced internal pocket bags
- Durable, tough metal zipper & tack button
- Slim fit
- Multiple pockets for all storage needs



## Y05115 3056 RIPSTOP UTILITY SHORT SHORTS

SIZE 72R–102R

COLOUR Desert (DST), Charcoal (CHA), Navy (NAV)

- 240gsm, 60% cotton/38% polyester/2% elastane blend ripstop
- Fabric is made with 38% REPREVE®, a performance fibre. REPREVE® is made from recycled polyester from post-consumer waste materials, including recycled plastic bottle
- Reinforced internal pocket bags
- Durable, tough metal zipper, tack button and rivets
- Seasonal colour highlights on internal waistband and hem binding
- Herringbone trim on welt pockets
- 3056 branded trims and labelling
- Multiple pockets for all storage needs
- Upper thigh length

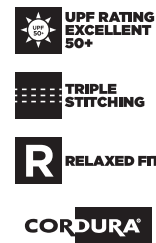


## Y05100 3056 RIPSTOP UTILITY CARGO SHORTS

SIZE 72R–102R

COLOUR Desert (DST), Charcoal (CHA), Navy (NAV)

- 240gsm, 60% cotton/38% polyester/2% elastane blend ripstop
- Fabric is made with 38% REPREVE®, a performance fibre. REPREVE® is made from recycled polyester from post-consumer waste materials, including recycled plastic bottle
- Reinforced internal pocket bags
- Durable, tough metal zipper, tack button and rivets
- Seasonal colour highlights on internal waistband and hem binding
- Herringbone trim on welt pockets
- 3056 branded trims and labelling
- Multiple pockets for all storage needs
- Above the knee length



## Y05066 LEGENDS HEAVY DUTY COTTON CARGO SHORTS

SIZE 77R–112R

COLOUR Khaki (KHA), Navy (NAV), Black (BLA)

- 340gsm, 100% cotton Panama weave with silicone wash
- Cordura reinforcement for extra toughness
- Relaxed fit, above the knee length
- Multiple pockets for storage needs

# CORE SHORTS

**R** RELAXED FIT

investing in  
**better cotton**  
BetterCotton.org/MassBalance



## Y05545 CORE ELASTIC COTTON DRILL SHORTS

SIZE S–5XL

COLOUR Navy (NAV)

- 190gsm, pre-shrunk cotton drill
- Red internal waistband binding and stitching
- Reinforced internal pocket bags with signature pocket bag print
- Relaxed fit with elastic waistband and internal draw cord
- Multiple pockets for all storage needs

By choosing our cotton products, you're supporting our investment in Better Cotton's mission. These products are sourced via a system of mass balance and therefore may not contain Better Cotton.

UPF RATING  
EXCELLENT  
50+

investing in  
**better cotton**  
BetterCotton.org/MassBalance



## Y05620 CORE RELAXED FIT COTTON CARGO DRILL SHORTS

SIZE 67R–112R

COLOUR Navy (NAV)

- 270gsm, 100% cotton drill
- Slanted front pockets
- Darted back waist for comfort fit
- Twin back hip pockets
- Cargo pocket with box pleat and touch tape closure
- Utility, ruler pocket and pen pocket RHS

By choosing our cotton products, you're supporting our investment in Better Cotton's mission. These products are sourced via a system of mass balance and therefore may not contain Better Cotton.

**R** RELAXED FIT

investing in  
**better cotton**  
BetterCotton.org/MassBalance



## Y05350 CORE RELAXED COTTON DRILL SHORTS WITH BELT LOOPS

SIZES 72R–127R

COLOURS Khaki (KHA), Navy (NAV)

- 290gsm, 100% Cotton Drill
- Reinforced internal pocket bags
- Multiple pockets for all storage needs
- Relaxed fit

By choosing our cotton products, you're supporting our investment in Better Cotton's mission. These products are sourced via a system of mass balance and therefore may not contain Better Cotton.

**R** RELAXED FIT

investing in  
**better cotton**  
BetterCotton.org/MassBalance



## Y05340 CORE RELAXED COTTON DRILL SHORT WITH SIDE TABS

SIZES 72R–127R

COLOURS Khaki (KHA), Navy (NAV)

- 290gsm, 100% Cotton Drill
- Reinforced internal pocket bags
- Multiple pockets for all storage needs
- Relaxed fit

By choosing our cotton products, you're supporting our investment in Better Cotton's mission. These products are sourced via a system of mass balance and therefore may not contain Better Cotton.

# CORE SHORTS



## Y05500 CORE COTTON CARGO DRILL SHORTS

SIZE 67R-112R

COLOUR Navy (NAV)

- 290gsm, pre-shrunk 100% cotton drill
- Red internal waistband binding and stitching
- Reinforced internal pocket bags with signature pocket bag print
- Relaxed fit
- Multiple pockets for all storage needs

By choosing our cotton products, you're supporting our investment in Better Cotton's mission. These products are sourced via a system of mass balance and therefore may not contain Better Cotton.



## Y05067 CORE STRETCH CARGO SHORTS

SIZES 67R-112R

COLOUR Khaki (KHA), Navy (NAV), Black (BLA)

- 270 gsm, 98% Cotton 2% Elastane
- Reinforced bar tacks for extra toughness
- Fob pocket for coins plus deep cargo pocket for storage
- Twin back hip pockets
- Cargo pocket with touch tape closure
- Pen pocket on wearers RHS

By choosing our cotton products, you're supporting our investment in Better Cotton's mission. These products are sourced via a system of mass balance and therefore may not contain Better Cotton.



# SHIRTS





# CORE CHECK FLANNEL SHIRT

## Y07752 CORE LONG SLEEVE CHECK FLANNEL SHIRT

SIZE XS-5XL

COLOUR Navy Orange Check (NOK), Green Check (GCK), Charcoal Check (CCK), Blue Check (BHC), Red Check (REC)

- 100% Cotton, 160gsm, One Side Brushed
- Regular fit
- Full open front closure
- Button chest pockets
- Soft and comfortable brushed flannel
- Two button placket sleeve cuffs



UPF RATING  
EXCELLENT  
50+



REGULAR FIT





## Y07295 LEGENDS LONG SLEEVE CHECK FLANNEL SHIRT

SIZE S-3XL

**COLOUR** Smoke (SMO), Bottle Green (BGR), Red Check (REC), Blue Check (BLC)

- 100% Brushed Cotton Flannel, 260gsm
- Full open front closure
- Two button down chest pockets
- Pen partition in left pocket

By choosing our cotton products, you're supporting our investment in Better Cotton's mission. These products are sourced via a system of mass balance and therefore may not contain Better Cotton.



## Y08744 WOMEN'S LEGENDS LONG SLEEVE CHECK FLANNEL SHIRT

SIZE 6-18

**COLOURS** Plum (PLY), Electric Blue (EBP)

- 100% Brushed Cotton Flannel 260gsm
- Heavy duty Flannel
- Collar with collar stand
- Back yoke and shoulders moved forward
- Curved back and front hem
- Full open front closure
- Left chest pocket with button closure
- Adjustable cuff with rounded edges

By choosing our cotton products, you're supporting our investment in Better Cotton's mission. These products are sourced via a system of mass balance and therefore may not contain Better Cotton.



## Y04006 CORE LONG SLEEVE CLOSED FRONT CHECK FLANNEL SHIRT

SIZE XS-5XL

**COLOUR** Blue Check (BHC), Charcoal Check (CCK), Navy Orange Check (NOK), Green Check (GCK), Red Check (REC)

- 100% Cotton, 160gsm, One Side Brushed
- Regular fit
- Closed closure
- Button chest pockets
- Soft and comfortable brushed flannel
- Two button placket sleeve cuffs



# CORE SHIRTS

## Y08806 WOMEN'S CORE LONG SLEEVE LIGHTWEIGHT SPICED TAPED VENTED DRILL SHIRT

SIZE 6-24

COLOUR Blue/Navy (BLN)

- Main Fabric: 100% Cotton Twill 145gsm  
Mesh: 100% Cotton 195gsm
- Twin chest pockets with flap and button closure
- Venting at back yoke with mesh
- Underarm mesh gusset
- ReflecTec tape
- Two tone colour
- Regular fit



## Y07910 CORE LONG SLEEVE LIGHTWEIGHT SPLICED TAPED VENTED DRILL SHIRT

SIZE S-5XL

COLOUR Blue/Navy (BLN)

- Main Fabric: 100% Cotton Twill 145gsm  
Mesh: 100% Cotton 195gsm
- Twin chest pockets with flap and button closure
- Venting at back yoke with mesh
- Underarm mesh gusset
- ReflecTec tape
- Two tone colour
- Regular fit



# CORE SHIRTS



## Y04610 CORE HI VIS LONG SLEEVE HEAVYWEIGHT SPLICED TAPED COTTON DRILL SHIRT

SIZE S-5XL

COLOUR Orange/Navy (ONA), Yellow/Navy (YNA)

- 190 gsm, 100% cotton drill
- UPF 50+
- Twin chest pockets with flap and button closure, pen partition on wearers LHS
- ReflecTec tape in hoop configuration
- Hi-vis compliant, for day and night use
- AS 4602.1:2011

By choosing our cotton products, you're supporting our investment in Better Cotton's mission. These products are sourced via a system of mass balance and therefore may not contain Better Cotton.



## Y04605 CORE HI VIS LONG SLEEVE HEAVYWEIGHT COTTON DRILL SHIRT

SIZE S-5XL

COLOUR Orange/Navy (ONA), Yellow/Navy (YNA)

- 190 gsm, 100% cotton drill
- Reinforced bar tacks on pockets to avoid ripping
- Twin chest pockets with flap and button closure, pen partition on wearers LHS
- Meets Australian standards for Hi-vis AS 4602.1:2011 for day use only
- UPF 50+ Excellent Protection

By choosing our cotton products, you're supporting our investment in Better Cotton's mission. These products are sourced via a system of mass balance and therefore may not contain Better Cotton.



## Y07990 CORE HI VIS LONG SLEEVE HEAVYWEIGHT SPLICED TAPED DRILL SHIRT

SIZE S-4XL

COLOUR Orange/Navy (ONA), Yellow/Navy (YNA)

- 190gsm, pre-shrunk 100% cotton drill
- ReflecTec 50mm reflective tape
- Full open front closure
- Two button down chest pockets
- Pen partition in left pocket
- Back pleats
- Two piece collar and stand

By choosing our cotton products, you're supporting our investment in Better Cotton's mission. These products are sourced via a system of mass balance and therefore may not contain Better Cotton.



## Y04615 CORE HI VIS LONG SLEEVE CLOSED FRONT HEAVYWEIGHT TAPED COTTON DRILL SHIRT

SIZE S-5XL

COLOUR Orange/Navy (ONA), Yellow/Navy (YNA)

- 190 gsm, 100% Cotton Drill
- Closed front
- Reinforced bar tacks on pockets
- Twin chest pockets with flap and button closure, pen partition on wearers LHS
- ReflecTec tape in hoop configuration
- Hi-vis compliant, for day and night use
- AS 4602.1:2011

By choosing our cotton products, you're supporting our investment in Better Cotton's mission. These products are sourced via a system of mass balance and therefore may not contain Better Cotton.

# CORE SHIRTS



## Y07984 CORE HI VIS LONG SLEEVE CLOSED FRONT HEAVYWEIGHT SPLICED GUSSET SLEEVE DRILL SHIRT (SOLID BACK)

SIZE S-5XL

COLOUR Orange/Navy (ONA), Yellow/Navy (YNA)

- 190gsm, pre-shrunk 100% cotton drill
- Closed front
- Two button down chest pockets
- Pen partition in left pocket
- Gusset sleeve
- Two piece collar and stand

By choosing our cotton products, you're supporting our investment in Better Cotton's mission. These products are sourced via a system of mass balance and therefore may not contain Better Cotton.



## Y07940 CORE HI VIS LONG SLEEVE LIGHTWEIGHT SPLICED TAPED VENTED DRILL SHIRT

SIZE S-5XL

COLOUR Yellow/Khaki (YKA), Yellow/Navy (YNA), Orange/Navy (ONA)

- 145gsm, 100% cotton twill
- Twin chest pockets with flap and button closure
- Venting at back yoke with mesh
- Underarm mesh gusset
- ReflecTec tape
- Hi-vis compliant
- Regular fit

By choosing our cotton products, you're supporting our investment in Better Cotton's mission. These products are sourced via a system of mass balance and therefore may not contain Better Cotton.



## Y04620 CORE HI VIS SHORT SLEEVE LIGHTWEIGHT SPLICED VENTED DRILL SHIRT

SIZE S-5XL

COLOUR Orange/Navy (ONA), Yellow/Navy (YNA)

- 145 gsm, 100% Cotton Drill
- UPF 50+
- Two chest pockets with left hand side pen gap
- Underarm Mesh Gusset and Venting at back yoke with mesh
- Hi-vis compliant, for day use only
- AS 4602.1:2011

By choosing our cotton products, you're supporting our investment in Better Cotton's mission. These products are sourced via a system of mass balance and therefore may not contain Better Cotton.



## Y08805 WOMEN'S CORE HI VIS LIGHTWEIGHT SPLICED TAPED VENTED DRILL SHIRT

SIZE 6-24

COLOUR Yellow/Khaki (YKA), Yellow/Navy (YNA), Orange/Navy (ONA)

- 145gsm, 100% Cotton Drill
- Modern Women's fit
- Back & underarm cooling vents
- Twin chest pockets with flap and button closure on wearers LHS
- ReflecTec tape in hoop configuration
- Hi-vis compliant
- Regular fit

By choosing our cotton products, you're supporting our investment in Better Cotton's mission. These products are sourced via a system of mass balance and therefore may not contain Better Cotton.

# CORE SHIRTS



UPF RATING EXCELLENT 50+



COOLFLOW



HI-VISIBILITY DAY/NIGHT



MOISTURE MANAGEMENT



REFLECTEC



RELAXED FIT



LIGHT WEIGHT



BetterCotton.org/MassBalance



## Y07735 CORE HI VIS SHORT SLEEVE LIGHTWEIGHT SPLICED TAPED VENTED DRILL SHIRT

SIZE S-5XL

COLOUR Orange/Navy (ONA), Yellow/Navy (YNA)

- 145gsm, 100% cotton
- Cotton is naturally breathable and durable
- 100% polyester mesh with antimicrobial finish
- Chest pockets with pen partition for storage
- Ventilation at underarm, side body and back body
- ReflecTec 50mm reflective tape

By choosing our cotton products, you're supporting our investment in Better Cotton's mission. These products are sourced via a system of mass balance and therefore may not contain Better Cotton.



UPF RATING EXCELLENT 50+



COOLFLOW



HI-VISIBILITY DAY



LIGHT WEIGHT



BetterCotton.org/MassBalance



## Y07950 CORE HI VIS LONG SLEEVE LIGHTWEIGHT SPLICED VENTED DRILL SHIRT

SIZE S-5XL

COLOUR Orange/Navy (ONA), Yellow/Navy (YNA)

- 145gsm, 100% cotton twill
- Twin chest pockets with flap and button closure
- Venting at back yoke with mesh
- Underarm mesh gusset
- Double fold front placket with button closure

By choosing our cotton products, you're supporting our investment in Better Cotton's mission. These products are sourced via a system of mass balance and therefore may not contain Better Cotton.



WOMEN'S SPECIFIC FIT



UPF RATING EXCELLENT 50+



HI-VISIBILITY DAY



COOLFLOW



LIGHT WEIGHT



REGULAR FIT



BetterCotton.org/MassBalance



## Y08423 WOMEN'S CORE HI VIS LONG SLEEVE LIGHTWEIGHT SPLICED VENTED DRILL SHIRT

SIZES 6-24

COLOURS Orange Navy (ONA), Yellow Navy (YNA)

- 100% Cotton Twill 145gsm; Contrast: 100% Cotton Mesh, 195gsm
- Cotton is naturally breathable and durable
- 100% Cotton Mesh Underarm Gusset & Internal Back Yoke Vent
- Chest pockets with pen partition for storage
- Ventilation at underarm, and Internal back yoke vent
- ReflecTec 50mm reflective tape

By choosing our cotton products, you're supporting our investment in Better Cotton's mission. These products are sourced via a system of mass balance and therefore may not contain Better Cotton.



UPF RATING EXCELLENT 50+



COOLFLOW



HI-VISIBILITY DAY



LIGHT WEIGHT



RELAXED FIT



BetterCotton.org/MassBalance



## Y07558 CORE HI VIS LONG SLEEVE LIGHTWEIGHT SPLICED VENTED DRILL SHIRT (SOLID BACK)

SIZE YNA & ONA: S-5XL; YGR: XS-5XL

COLOUR Yellow/Navy (YNA), Orange/Navy (ONA), Yellow/Green (YGR)

- 145gsm, 100% cotton twill\*
- 200gsm, cotton mesh
- Vented back yoke & shoulders
- Underarm cotton mesh vents
- Two button down chest pockets
- Pen partition in left pocket

By choosing our cotton products, you're supporting our investment in Better Cotton's mission. These products are sourced via a system of mass balance and therefore may not contain Better Cotton.

# CORE SHIRTS



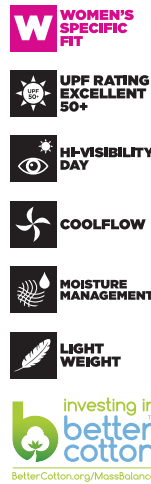
## Y07978 CORE HI VIS LONG SLEEVE LIGHTWEIGHT SPLICED TAPED VENTED DRILL SHIRT (SOLID BACK)

SIZE S-5XL

COLOUR Orange/Navy (ONA), Yellow/Navy (YNA)

- 145gsm, 100% cotton twill
- 200gsm, cotton mesh
- 50mm reflective tape
- Vented back yoke & shoulders
- Underarm cotton mesh vents
- Two button down chest pockets
- Pen partition in left pocket

By choosing our cotton products, you're supporting our investment in Better Cotton's mission. These products are sourced via a system of mass balance and therefore may not contain Better Cotton.



## Y08225 WOMEN'S CORE HI VIS LONG SLEEVE LIGHTWEIGHT SPLICED VENTED DRILL SHIRT

SIZE 8-22

COLOUR Yellow/Navy (YNA)

- 145gsm, 100% cotton twill
- Cotton twill is naturally durable and breathable
- 100% polyester mesh with antimicrobial finish
- Chest pockets with pen partition for storage
- Ventilation at underarm, side body and back body
- Mesh colour matching garment hi-visibility colour
- Tailored fit for women

By choosing our cotton products, you're supporting our investment in Better Cotton's mission. These products are sourced via a system of mass balance and therefore may not contain Better Cotton.



## Y07754 CORE HI VIS SHORT SLEEVE LIGHTWEIGHT SPLICED TAPED VENTED DRILL SHIRT

SIZES S-5XL

COLOURS Orange Navy (ONA), Yellow Navy (YNA)

- 100% Cotton Twill 145gsm; Contrast: 100% Cotton Mesh, 195gsm
- Cotton is naturally breathable and durable
- 100% Cotton Mesh Underarm Gusset & Internal Back Yoke Vent
- Chest pockets with pen partition for storage
- Ventilation at underarm, and Internal back yoke vent
- Reflectec 50mm reflective tape

By choosing our cotton products, you're supporting our investment in Better Cotton's mission. These products are sourced via a system of mass balance and therefore may not contain Better Cotton.



## Y07559 CORE HI VIS SHORT SLEEVE LIGHTWEIGHT SPLICED VENTED DRILL SHIRT (SOLID BACK)

SIZE S-5XL

COLOUR Orange/Navy (ONA), Yellow/Navy (YNA)

- 145gsm, 100% cotton twill\*
- 200gsm, cotton mesh
- Vented back yoke & shoulders
- Underarm cotton mesh vents
- Two button down chest pockets
- Pen partition in left pocket

By choosing our cotton products, you're supporting our investment in Better Cotton's mission. These products are sourced via a system of mass balance and therefore may not contain Better Cotton.

# CORE SHIRTS



## Y07996 CORE HI VIS LONG SLEEVE LIGHTWEIGHT TAPED VENTED DRILL SHIRT

SIZE S-5XL

COLOUR Safety Orange (SOR)

- 145gsm, 100% cotton twill\*\*
- 200gsm, cotton mesh
- 50mm reflective tape
- Vented back yoke & shoulders
- Underarm cotton mesh vents
- Two button down chest pockets
- Pen partition in left pocket

By choosing our cotton products, you're supporting our investment in Better Cotton's mission. These products are sourced via a system of mass balance and therefore may not contain Better Cotton.



## Y07899 CORE HI VIS LONG SLEEVE CLOSED FRONT HEAVYWEIGHT TAPED COTTON DRILL SHIRT

SIZE S-6XL

COLOUR Safety Orange (SOR)

- 190gsm, pre-shrunk 100% cotton drill
- Reflectec 50mm reflective tape
- Closed front
- Two button down chest pockets with pen partition in left pocket
- Back pleats
- Two piece collar and stand

By choosing our cotton products, you're supporting our investment in Better Cotton's mission. These products are sourced via a system of mass balance and therefore may not contain Better Cotton.



## Y07227 CORE HI VIS LONG SLEEVE HEAVYWEIGHT TAPED DRILL SHIRT

SIZE XS-5XL

COLOUR Navy (NAV)

- 190gsm, pre-shrunk 100% cotton fabric
- Reflectec 50mm reflective tape
- Full open front closure
- Two button down chest pockets
- Pen partition in left pocket
- Two piece collar and stand

By choosing our cotton products, you're supporting our investment in Better Cotton's mission. These products are sourced via a system of mass balance and therefore may not contain Better Cotton.



# CORE SHIRTS

**UPF RATING EXCELLENT 50+**

**COOLFLOW**

**HI-VISIBILITY DAY/NIGHT**

**REFLECTEC**

**LIGHT WEIGHT**

investing in **better cotton**  
BetterCotton.org/MossBalance



**RAIL & INFRASTRUCTURE**

## Y04265 CORE HI VIS LONG SLEEVE LIGHTWEIGHT BIOMOTION VIC RAIL SHIRT

SIZE XS-7XL

**COLOUR** Special Purpose Orange (SPO)

- 145gsm, 100% cotton twill
- ReflecTec 50mm retroreflective tape, in Vic Rail and Biomotion configuration – hoop
- Twin chest pockets with flap and button closure
- Venting at back yoke with mesh
- Underarm mesh gusset
- Double fold front placket with button closure

By choosing our cotton products, you're supporting our investment in Better Cotton's mission. These products are sourced via a system of mass balance and therefore may not contain Better Cotton.

**UPF RATING EXCELLENT 50+**

**COOLFLOW**

**HI-VISIBILITY DAY/NIGHT**

**REFLECTEC**

**LIGHT WEIGHT**

investing in **better cotton**  
BetterCotton.org/MossBalance



**RAIL & INFRASTRUCTURE**

## Y04275 CORE HI VIS LONG SLEEVE LIGHTWEIGHT BIOMOTION X BACK TAPED SHIRT

SIZE XS-7XL

**COLOUR** Safety Orange (SOR)

- 145gsm, 100% cotton twill
- ReflecTec 50mm retroreflective tape, in Rail and Biomotion configuration – hoop front, X-back
- Twin chest pockets with flap and button closure
- Venting at back yoke with mesh
- Underarm mesh gusset
- Double fold front placket with button closure

By choosing our cotton products, you're supporting our investment in Better Cotton's mission. These products are sourced via a system of mass balance and therefore may not contain Better Cotton.

**WOMEN'S SPECIFIC FIT**

**UPF RATING EXCELLENT 50+**

**COOLFLOW**

**HI-VISIBILITY DAY/NIGHT**

**REFLECTEC**

**LIGHT WEIGHT**

investing in **better cotton**  
BetterCotton.org/MossBalance



**RAIL & INFRASTRUCTURE**

## Y08421 WOMEN'S CORE HI VIS LONG SLEEVE LIGHTWEIGHT BIOMOTION VIC RAIL SHIRT

SIZE 6-24

**COLOUR** Special Purpose Orange (SPO)

- 145gsm, 100% cotton twill
- ReflecTec 50mm retroreflective tape, in Vic Rail and Biomotion configuration – hoop
- Twin chest pockets with flap and button closure
- Venting at back yoke with mesh
- Underarm mesh gusset
- Double fold front placket with button closure

By choosing our cotton products, you're supporting our investment in Better Cotton's mission. These products are sourced via a system of mass balance and therefore may not contain Better Cotton.

**WOMEN'S SPECIFIC FIT**

**UPF RATING EXCELLENT 50+**

**COOLFLOW**

**HI-VISIBILITY DAY/NIGHT**

**REFLECTEC**

**LIGHT WEIGHT**

investing in **better cotton**  
BetterCotton.org/MossBalance



**RAIL & INFRASTRUCTURE**

## Y08420 WOMEN'S CORE HI VIS LONG SLEEVE LIGHTWEIGHT BIOMOTION X BACK TAPED SHIRT

SIZE 6-24

**COLOUR** Safety Orange (SOR)

- 145gsm, 100% cotton twill
- ReflecTec 50mm retroreflective tape, in Rail and Biomotion configuration – hoop front, X-back
- Twin chest pockets with flap and button closure
- Venting at back yoke with mesh
- Underarm mesh gusset
- Double fold front placket with button closure

By choosing our cotton products, you're supporting our investment in Better Cotton's mission. These products are sourced via a system of mass balance and therefore may not contain Better Cotton.

# CORE SHIRTS



## Y07530 CORE LONG SLEEVE CLOSED FRONT HEAVYWEIGHT DRILL SHIRT

SIZE S-6XL

COLOUR Green (GRN), Khaki (KHA), Navy (NAV)

- 190gsm, preshrunk 100% cotton drill
- Pleated back
- Two piece collar & stand
- Two button down chest pockets
- Pen partition in left pocket
- Closed front & placket sleeves

By choosing our cotton products, you're supporting our investment in Better Cotton's mission. These products are sourced via a system of mass balance and therefore may not contain Better Cotton.



## Y07540 CORE SHORT SLEEVE CLOSED FRONT HEAVYWEIGHT DRILL SHIRT

SIZE S-6XL

COLOUR Khaki (KHA), Green (GRN), Navy (NAV)

- 190gsm, preshrunk cotton drill
- Pleated back
- Two piece collar & stand
- Two button down chest pockets
- Pen partition in left pocket
- Closed front

By choosing our cotton products, you're supporting our investment in Better Cotton's mission. These products are sourced via a system of mass balance and therefore may not contain Better Cotton.



## Y07500 CORE LONG SLEEVE HEAVYWEIGHT COTTON DRILL SHIRT

SIZE XS-6XL

COLOUR Khaki (KHA), Grey (GRY), Green (GRN), Navy (NAV)

- 190gsm, preshrunk 100% cotton drill
- Pleated back
- Two piece collar & stand
- Two button down chest pockets
- Pen partition in left pocket
- Full open front closure

By choosing our cotton products, you're supporting our investment in Better Cotton's mission. These products are sourced via a system of mass balance and therefore may not contain Better Cotton.



## Y07510 CORE SHORT SLEEVE HEAVYWEIGHT COTTON DRILL SHIRT

SIZE XS-6XL

COLOUR Navy (NAV), Khaki (KHA), Green (GRN)

- 190gsm, preshrunk cotton drill
- Pleated back
- Two piece collar & stand
- Two chest pockets button down
- Pen partition in left pocket
- Full open front closure

By choosing our cotton products, you're supporting our investment in Better Cotton's mission. These products are sourced via a system of mass balance and therefore may not contain Better Cotton.

# CORE SHIRTS



UPF RATING  
EXCELLENT  
50+



LIGHT  
WEIGHT



BetterCotton.org/MossBalance



UPF RATING  
EXCELLENT  
50+



LIGHT  
WEIGHT



BetterCotton.org/MossBalance



## Y04630 CORE LONG SLEEVE LIGHTWEIGHT VENTED DRILL SHIRT

SIZE S-5XL

COLOUR Khaki (KHA), Navy (NAV)

- 145 gsm, 100% Cotton Drill
- UPF 50+
- Twin chest pockets with flap and button closure, pen partition on wearers LHS
- Underarm mesh gusset, and venting at back yoke with mesh
- Bartacked for extra strength

By choosing our cotton products, you're supporting our investment in Better Cotton's mission. These products are sourced via a system of mass balance and therefore may not contain Better Cotton.

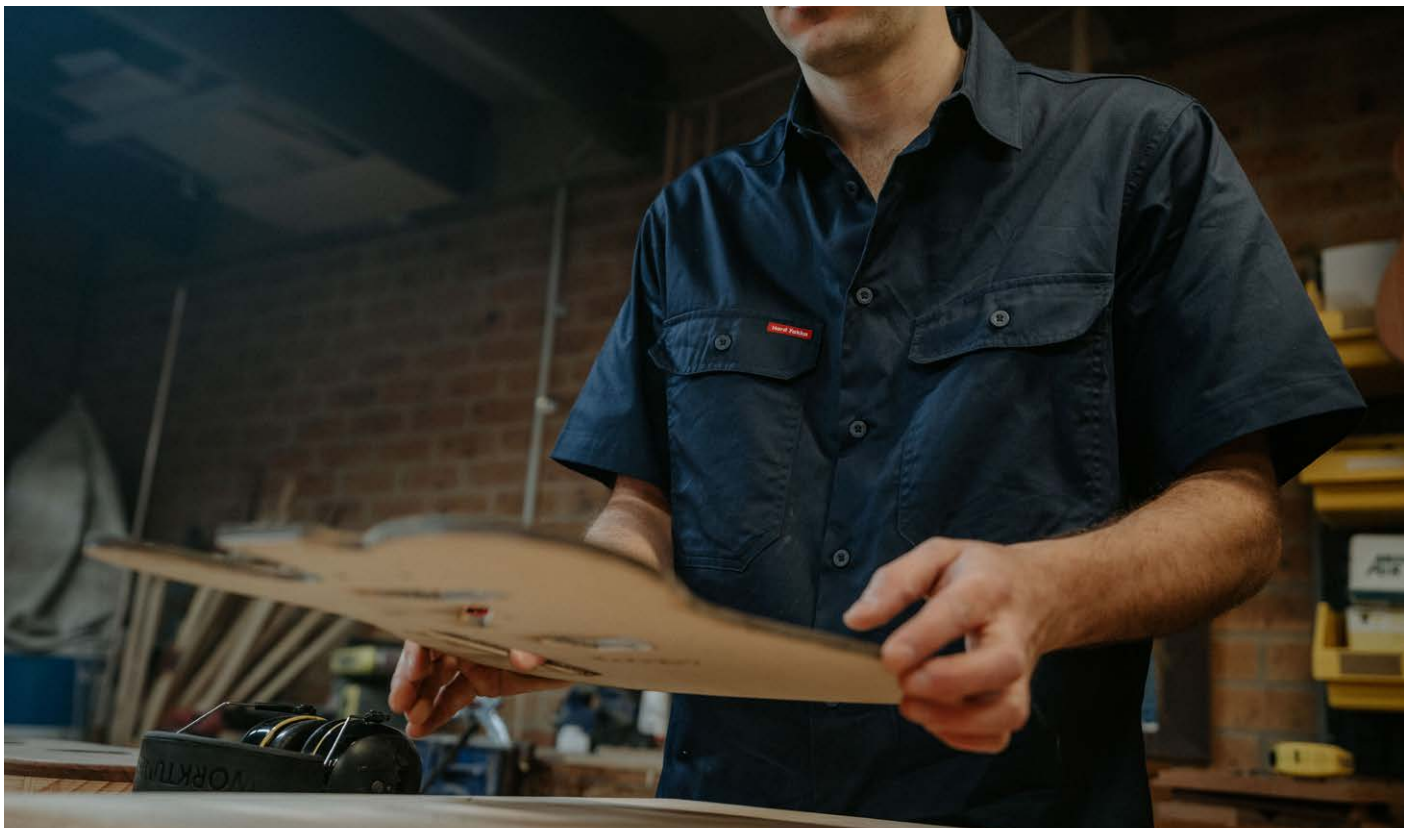
## Y04625 CORE SHORT SLEEVE LIGHTWEIGHT VENTED DRILL SHIRT

SIZE S-5XL

COLOUR Khaki (KHA), Navy (NAV)

- 145 gsm, 100% Cotton Drill
- UPF 50+
- Twin chest pockets with flap and button closure, pen partition on wearers LHS
- Underarm mesh gusset, and venting at back yoke with mesh
- Underarm sleeve vent
- Bartacked for extra strength

By choosing our cotton products, you're supporting our investment in Better Cotton's mission. These products are sourced via a system of mass balance and therefore may not contain Better Cotton.



**HARD YAKKA CORE RANGE IS ALWAYS IN STOCK!**

# CORE SHIRTS



EASY CARE



LIGHT WEIGHT



## Y07590 CORE LONG SLEEVE PERMANENT PRESS SHIRT

SIZE XS-6XL

COLOUR Navy (NAV)

- 120gsm, 65% polyester/35% cotton fabric
- Full open front placket closure
- Two button down chest pockets
- Pen partition in left pocket
- Box pleat for freedom of movement
- Two button adjustable cuff & sleeve placket vent



EASY CARE



LIGHT WEIGHT



## Y07591 CORE SHORT SLEEVE PERMANENT PRESS SHIRT

SIZE XS-6XL

COLOUR Navy (NAV)

- 120gsm, 65% polyester/35% cotton fabric
- Full open front placket closure
- Two button down chest pockets
- Pen partition in left pocket
- Box pleat for freedom of movement



EASY CARE



RELAXED FIT



LIGHT WEIGHT



## Y07691 CORE SHORT SLEEVE PERMANENT PRESS SHIRT WITH EPAULETTES

SIZE XS-6XL

COLOUR White (WHI)

- 120gsm, 65% polyester/35% cotton fabric
- Two piece collar
- Fused shoulder epaulettes
- Full open front placket closure
- Two button down chest pockets
- Pen partition in left pocket
- Box pleat for freedom of movement





# COVERALLS





# CORE COVERALLS



## Y00262 CORE HI VIS SPLICED H TAPED COTTON DRILL COVERALLS

SIZE YNA: 77R–127R, 87S–132S; ONA: 77R–117R, 87S–132S

COLOUR Orange/Navy (ONA), Yellow/Navy (YNA)

- 290gsm, pre-shrunk 100% cotton drill
- 50mm reflective tape in H-configuration, suitable for light industrial wash
- Left chest pocket with pencil & ruler partition
- Mobile phone pocket, reinforced pocket lining and two side pockets
- Utility pocket & elasticised back waist

By choosing our cotton products, you're supporting our investment in Better Cotton's mission. These products are sourced via a system of mass balance and therefore may not contain Better Cotton.



## Y01055 CORE HI VIS SPLICED ACTION BACK TAPED COTTON DRILL OVERALLS

SIZE 72R–117R, 92S–132S

COLOUR Orange/Navy (ONA), Yellow/Navy (YNA)

- 290gsm, pre-shrunk 100% cotton drill
- 50mm reflective tape suitable for light industrial wash
- Elastic straps & elasticised back waist
- Non-spill right chest pocket & left chest pocket with pencil partition
- Mobile phone pocket, reinforced pocket lining & two side pockets
- Heavy-duty nickel plated studs

By choosing our cotton products, you're supporting our investment in Better Cotton's mission. These products are sourced via a system of mass balance and therefore may not contain Better Cotton.



## Y00270 CORE HI VIS SPLICED H TAPED COTTON DRILL COVERALLS

SIZE 77R–117R, 87S–132S

COLOUR Orange/Navy (ONA), Yellow/Navy (YNA)

- 290gsm, pre-shrunk 100% cotton drill
- Left chest pocket with pencil & ruler partition
- Heavy-duty nickel plated studs
- Mobile phone pocket, reinforced pocket lining & two side pockets
- Raglan sleeves & elasticised back waist
- Utility pocket

By choosing our cotton products, you're supporting our investment in Better Cotton's mission. These products are sourced via a system of mass balance and therefore may not contain Better Cotton.



## Y01526 CORE HI VIS SPLICED ACTION BACK COTTON DRILL OVERALLS

SIZE 77R–117R, 92S–132S

COLOUR Orange/Navy (ONA)

- 290gsm, pre-shrunk 100% cotton drill
- Left chest pocket with pencil partition
- Elastic straps & elasticised back waist
- Heavy-duty nickel plated studs
- Ruler leg pocket
- Mobile phone pocket, reinforced pocket lining & two side pockets

By choosing our cotton products, you're supporting our investment in Better Cotton's mission. These products are sourced via a system of mass balance and therefore may not contain Better Cotton.

# CORE COVERALLS



## Y00010 CORE COTTON DRILL COVERALLS

SIZE 72R–122R, 87S–132S

COLOUR Navy (NAV)

- 290gsm, pre-shrunk 100% cotton drill
- Left chest pocket with pencil & ruler partition
- Mobile phone pocket, reinforced pocket lining & two side pockets
- Heavy-duty nickel plated studs
- Raglan sleeves & elasticised back waist
- Utility pocket

By choosing our cotton products, you're supporting our investment in Better Cotton's mission. These products are sourced via a system of mass balance and therefore may not contain Better Cotton.



## Y01555 CORE ACTION BACK COTTON DRILL OVERALLS

SIZE KHA: 72R–122R, 87S–132S; NAV: 67R–122R, 87S–132S

COLOUR Khaki (KHA), Navy (NAV)

- 290gsm, pre-shrunk 100% cotton drill
- Elastic straps & elasticised back waist
- Left chest pocket with pencil partition
- Mobile phone pocket, double layered pocket lining & two side pockets
- Heavy-duty nickel plated studs

By choosing our cotton products, you're supporting our investment in Better Cotton's mission. These products are sourced via a system of mass balance and therefore may not contain Better Cotton.



**WIDE RANGE OF  
SIZE AND COLOUR  
OPTIONS**



## Y01010 CORE BIB & BRACE CROSS BACK COTTON DRILL OVERALLS

SIZE 67R–122R, 87S–132S

COLOUR Khaki (KHA), Navy (NAV)

- 290gsm, pre-shrunk 100% cotton drill
- Chest pocket with pencil partition
- Adjustable straps with heavy duty nickel buckles
- Heavy-duty nickel plated studs
- Ruler leg pocket & two side pockets
- Mobile phone pocket, double layered pocket lining

By choosing our cotton products, you're supporting our investment in Better Cotton's mission. These products are sourced via a system of mass balance and therefore may not contain Better Cotton.

# COVERALLS



## Y00015 CORE LIGHTWEIGHT POLY-COTTON COVERALLS

SIZE 77R–122R, 87S–132S

COLOUR Navy (NAV)

- 220gsm, 65% polyester/35% cotton fabric
- Left chest pocket with pencil partition
- Nickel plated gripper studs
- Raglan sleeves & elasticised back waist
- Utility pocket
- Mobile phone pocket
- Reinforced pocket lining & two side pockets

By choosing our cotton products, you're supporting our investment in Better Cotton's mission. These products are sourced via a system of mass balance and therefore may not contain Better Cotton.



## Y00030 CORE LIGHTWEIGHT COTTON DRILL COVERALLS

SIZE KHA: 77R–122R, 87S–132S

WHI: 77R–122R, 87S–132S

NAV: 72R–122R, 87S–132S, 74L–94L

COLOUR Khaki (KHA), White (WHI)<sup>^</sup>, Navy (NAV)

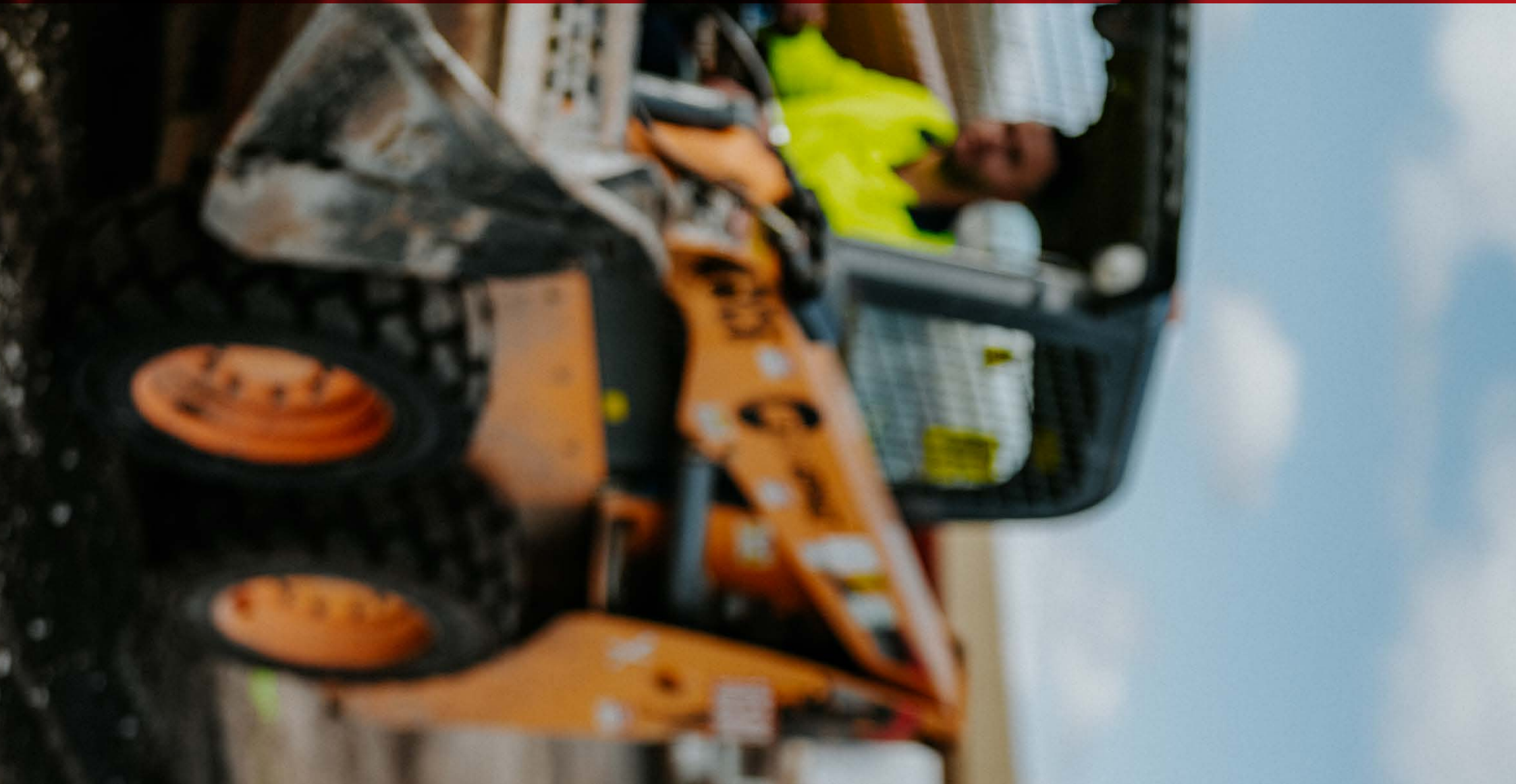
- 185gsm, pre-shrunk 100% cotton drill
- Left chest pocket with pencil & ruler partition
- Raglan sleeves & gusset
- Nylon studs & elasticised back waist
- Utility pocket
- Mobile phone pocket
- Reinforced pocket lining & two side pockets

By choosing our cotton products, you're supporting our investment in Better Cotton's mission. These products are sourced via a system of mass balance and therefore may not contain Better Cotton.





# POLOS





# CORE POLOS

-  **UPF RATING EXCELLENT 50+**
-  **HI-VISIBILITY DAY/NIGHT**
-  **BREATHABLE FABRIC**
-  **MOISTURE MANAGEMENT**
-  **STRETCH FABRIC**
-  **REGULAR FIT**



-  **UPF RATING EXCELLENT 50+**
-  **HI-VISIBILITY DAY**
-  **BREATHABLE FABRIC**
-  **MOISTURE MANAGEMENT**
-  **STRETCH FABRIC**
-  **REGULAR FIT**



## Y19619 CORE HI VIS LONG SLEEVE SPLICED SEGMENTED TAPED POLO

SIZE S-5XL

COLOUR Yellow/Navy (YNA), Orange/Navy (ONA)

- 100% Polyester Pique Knit, 170gsm, UPF50+
- Regular fit
- Hi vis day night compliant with AS 4602.1:2011
- 50mm segmented reflective tape
- Moisture management with wicking
- Breathable soft hand feel
- Single chest pocket with pen partition
- Knitted rib sleeve cuffs and collar with placket
- UPF 50+ Rating

## Y19617 CORE HI VIS LONG SLEEVE SPLICED POLO

SIZE S-5XL

COLOUR Yellow/Navy (YNA), Orange/Navy (ONA)

- 100% Polyester Pique Knit, 170gsm, UPF50+
- Regular fit
- Hi vis day compliant with AS 4602.1:2011
- Moisture management with wicking
- Breathable soft hand feel
- Single chest pocket with pen partition
- Knitted rib sleeve cuffs and collar with placket
- UPF 50+ Rating

-  **WOMEN'S SPECIFIC FIT**
-  **UPF RATING EXCELLENT 50+**
-  **HI-VISIBILITY DAY/NIGHT**
-  **BREATHABLE FABRIC**
-  **MOISTURE MANAGEMENT**
-  **STRETCH FABRIC**
-  **REGULAR FIT**



-  **WOMEN'S SPECIFIC FIT**
-  **UPF RATING EXCELLENT 50+**
-  **HI-VISIBILITY DAY**
-  **BREATHABLE FABRIC**
-  **MOISTURE MANAGEMENT**
-  **STRETCH FABRIC**
-  **REGULAR FIT**



## Y08604 WOMEN'S CORE HI VIS LONG SLEEVE SPLICED SEGMENTED TAPED POLO

SIZE 6-24

COLOUR Yellow/Navy (YNA), Orange/Navy (ONA)

- 100% Polyester Pique Knit, 170gsm, UPF50+
- Regular fit
- Contoured Women's Specific fit
- Hi vis day night compliant with AS 4602.1:2011
- 50mm segmented reflective tape
- Moisture management with wicking
- Breathable soft hand feel
- Single chest pocket with pen partition
- Knitted rib sleeve cuffs and collar with placket
- UPF 50+ Rating

## Y08603 WOMEN'S CORE HI VIS LONG SLEEVE SPLICED POLO

SIZE 6-24

COLOUR Yellow/Navy (YNA), Orange/Navy (ONA)

- 100% Polyester Pique Knit, 170gsm, UPF50+
- Regular fit
- Contoured Women's Specific fit
- Hi vis day compliant with AS 4602.1:2011
- Moisture management with wicking
- Breathable soft hand feel
- Single chest pocket with pen partition
- Knitted rib collar with placket
- UPF 50+ Rating

# CORE POLOS

-  **UPF RATING EXCELLENT 50+**
-  **HI-VISIBILITY DAY/NIGHT**
-  **BREATHABLE FABRIC**
-  **MOISTURE MANAGEMENT**
-  **STRETCH FABRIC**
-  **REGULAR FIT**



## Y19618 CORE HI VIS SHORT SLEEVE SPLICED SEGMENTED TAPED POLO

SIZE S-5XL

**COLOUR** Yellow/Navy (YNA), Orange/Navy (ONA)

- 100% Polyester Pique Knit, 170gsm, UPF50+
- Regular fit
- Hi vis day night compliant with AS 4602.1:2011
- 50mm segmented reflective tape
- Moisture management with wicking
- Breathable soft hand feel
- Single chest pocket with pen partition
- Knitted rib collar with placket
- UPF 50+ Rating

-  **UPF RATING EXCELLENT 50+**
-  **HI-VISIBILITY DAY**
-  **BREATHABLE FABRIC**
-  **MOISTURE MANAGEMENT**
-  **STRETCH FABRIC**
-  **REGULAR FIT**



## Y19616 CORE HI VIS SHORT SLEEVE SPLICED POLO

SIZE S-5XL

**COLOUR** Yellow/Navy (YNA), Orange/Navy (ONA)

- 100% Polyester Pique Knit, 170gsm, UPF50+
- Regular fit
- Hi vis day compliant with AS 4602.1:2011
- Moisture management with wicking
- Breathable soft hand feel
- Single chest pocket with pen partition
- Knitted rib collar with placket
- UPF 50+ Rating

-  **WOMEN'S SPECIFIC FIT**
-  **UPF RATING EXCELLENT 50+**
-  **HI-VISIBILITY DAY/NIGHT**
-  **BREATHABLE FABRIC**
-  **MOISTURE MANAGEMENT**
-  **STRETCH FABRIC**
-  **REGULAR FIT**



## Y08602 WOMEN'S CORE HI VIS SHORT SLEEVE SPLICED SEGMENTED TAPED POLO

SIZE 6-24

**COLOUR** Yellow/Navy (YNA), Orange/Navy (ONA)

- 100% Polyester Pique Knit, 170gsm, UPF50+
- Regular fit
- Contoured Women's Specific fit
- Hi vis day night compliant with AS 4602.1:2011
- 50mm segmented reflective tape
- Moisture management with wicking
- Breathable soft hand feel
- Single chest pocket with pen partition
- Knitted rib collar with placket
- UPF 50+ Rating

-  **WOMEN'S SPECIFIC FIT**
-  **UPF RATING EXCELLENT 50+**
-  **HI-VISIBILITY DAY**
-  **BREATHABLE FABRIC**
-  **MOISTURE MANAGEMENT**
-  **STRETCH FABRIC**
-  **REGULAR FIT**



## Y08601 WOMEN'S CORE HI VIS SHORT SLEEVE SPLICED POLO

SIZE 6-24

**COLOUR** Yellow/Navy (YNA), Orange/Navy (ONA)

- 100% Polyester Pique Knit, 170gsm, UPF50+
- Regular fit
- Contoured Women's Specific fit
- Hi vis day compliant with AS 4602.1:2011
- Moisture management with wicking
- Breathable soft hand feel
- Single chest pocket with pen partition
- Knitted rib collar with placket
- UPF 50+ Rating

# CORE POLOS



UPF RATING  
EXCELLENT  
50+



COOLFLOW



MOISTURE  
MANAGEMENT



HI-VISIBILITY  
DAY/NIGHT



REFLECTEC



RELAXED FIT



## Y11379 CORE HI VIS LONG SLEEVE SPLICED SEGMENTED TAPED VENTED POLO

SIZE XS-5XL

COLOUR Orange/ Dark Navy (ODN), Lemon/Dark Navy (LDN)

- 185gsm, 55% cotton/45% polyester micromesh
- 100% polyester grid knit mesh for venting with antimicrobial finish
- Regular fit through body with raglan seams for comfort and movement
- Main body fabric is soft, light and naturally breathable
- Mesh inserts for venting on high heat zones – side body, back, underarms and back collar
- Segmented ReflecTec 50mm reflective tape allows for stretch and movement while keeping you safe and visible
- Secure chest pocket with mesh lining to aid venting
- Extended placket opening for extra venting



RELAXED FIT



## Y11307 CORE LONG SLEEVE POLO

SIZE XS-5XL

COLOUR Navy (NAV)

- 190gsm, 65% polyester/35% cotton pique
- Regular fit through body
- Button front placket
- Chest pocket with pen partition
- Splits at side of shirt for ease of movement
- Polo is longer at back for extra coverage
- Rib collar
- Bar tacks on stress points



UPF RATING  
EXCELLENT  
50+



COOLFLOW



MOISTURE  
MANAGEMENT



HI-VISIBILITY  
DAY



RELAXED FIT

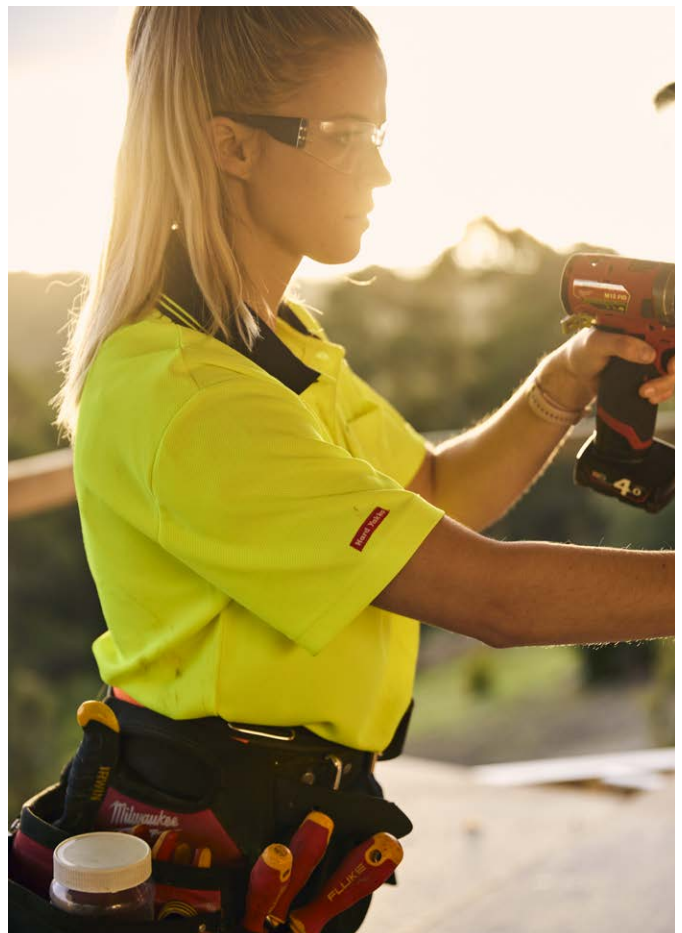


## Y11389 CORE HI VIS LONG SLEEVE SPLICED VENTED POLO

SIZE XS-5XL

COLOUR Lemon/Dark Navy (LDN)

- 185gsm, 55% cotton/45% polyester micromesh
- 100% polyester grid knit mesh for venting with antimicrobial finish
- Regular fit through body with raglan seams for comfort and movement
- Main body fabric is soft, light and naturally breathable
- Mesh inserts for venting on high heat zones – side body, back, underarms and back collar
- Secure chest pocket with mesh lining to aid venting
- Extended placket opening for extra venting



# CORE POLOS

-  **UPF RATING EXCELLENT 50+**
-  **COOLFLOW**
-  **HI-VISIBILITY DAY/NIGHT**
-  **MOISTURE MANAGEMENT**
-  **REFLECTEC**
-  **RELAXED FIT**



## Y11383 CORE HI VIS SHORT SLEEVE SPLICED SEGMENTED TAPED VENTED POLO

SIZE XS-5XL

COLOUR Lemon/Dark Navy (LDN)

- 185gsm, 55% cotton/45% polyester micromesh
- 100% polyester grid knit mesh for venting with antimicrobial finish
- Regular fit through body with raglan seams for comfort and movement
- Main body fabric is soft, light and naturally breathable
- Mesh inserts for venting on high heat zones – side body, back, underarms and back collar
- Segmented Reflectec 50mm reflective tape allows for stretch and movement while keeping you safe and visible
- Secure chest pocket with mesh lining to aid venting
- Extended placket opening for extra venting

 **RELAXED FIT**




## Y11306 CORE SHORT SLEEVE POLO

SIZE XS-5XL

COLOUR Navy (NAV), Black (BLA)

- 190gsm, 65% polyester/35% cotton pique
- Regular fit through body
- Button front placket
- Chest pocket with pen partition
- Splits at side of shirt for ease of movement
- Polo is longer at back for extra coverage
- Rib collar
- Bar tacks on stress points

-  **UPF RATING EXCELLENT 50+**
-  **COOLFLOW**
-  **HI-VISIBILITY DAY**
-  **MOISTURE MANAGEMENT**
-  **RELAXED FIT**



## Y11396 CORE HI VIS SHORT SLEEVE SPLICED VENTED POLO

SIZE XS-5XL

COLOUR Lemon/Dark Navy (LDN)

- 185gsm, 55% cotton/45% polyester micromesh
- 100% polyester grid knit mesh for venting with antimicrobial finish
- Regular fit through body with raglan seams for comfort and movement
- Main body fabric is soft, light and naturally breathable
- Mesh inserts for venting on high heat zones – side body, back, underarms and back collar
- Secure chest pocket with mesh lining to aid venting
- Extended placket opening for extra venting



# TEES





# TEES



UPF RATING  
EXCELLENT  
50+



QUICK DRY



REGULAR FIT



## Y19559 3056 X-RANGE PERFORMANCE TEE

SIZE S-2XL

COLOUR Grey Marle (GMA), Desert (DST)

- 100% Polyester
- Regular fit
- Quick dry, moisture wicking
- Light weight
- Outer coverstitch seams for inner body comfort



WOMEN'S  
SPECIFIC  
FIT



MOISTURE  
MANAGEMENT



STRETCH  
FABRIC



RECYCLED  
MATERIALS



REGULAR FIT



## Y08060 3056 WOMEN'S X-RANGE CROP TOP

SIZE 8-16

COLOUR Black (BLA)

- Main: 81% Nylon, 19% Elastane, 240gsm;  
Contrast fabric: 85% Nylon, 15% Elastane Mesh 165gsm
- Made with 81% Nylon from pre-consumer waste materials, including reclaimed manufacturing waste
- Double Peached finish, soft hand feel
- Wicking with high stretch fabric properties
- Fully lined with mesh to keep it light weight and breathable
- Tear drop key-hole at back of crop, flattering fit
- Modest neckline at front
- Molded cups for modesty and support
- Low to medium support crop top

# CORE SHORT SLEEVE TEE



AUSTRALIAN  
COTTON



## Y19251 CORE SHORT SLEEVE TEE

SIZE XS-5XL

**COLOUR** White (WHI), Grey Marle (GMA), Khaki (KHA), Gardeners Green (GAG), Navy (NAV), Charcoal (CHA), Black (BLA), Orange (ORA), Yellow (YEL)

- 100% Cotton, 160gsm
- This product is made from Australian cotton, grown by Australian farmers and known for its strength and quality
- Breathable soft hand feel
- Crew neck with ribbing
- Twin needle stitching



# FLEECE





# CORE FLEECE



## Y19326 CORE FLEECE WORKWEAR HOODIE

SIZE XS–6XL

COLOUR Grey Marle (613), Charcoal (CHA), Navy (NAV), Black (BLA)

- 320gsm, 65% polyester/35% cotton brushed fleece
- Left sleeve twin pencil pocket in contrast fabric
- Two utility pockets on either side of garment
- Kangaroo pouch pockets
- Mesh hood lining
- Metal eyelets on hood to reinforce drawstring holes
- Ribbed knit fabric on waist & cuffs
- Safety drawstring feature on hood ensures drawstring stays inside garment to prevent catching



**R** REGULAR FIT



## Y19542 CORE FLEECE HOODIE WITH ZIP

SIZE XS–6XL

COLOUR Black (BLA), Navy (NAV), Gardeners Green (GAG)

- 65% Polyester, 35% Cotton Brushed Fleece, 320gsm
- Contrast: Hood Lining Mesh 100% Polyester
- Regular fit
- Full open zip front closure
- Kangaroo pouch pockets
- Two utility pockets on either side of garment
- Mesh hood lining
- Safety drawstring feature drawstring
- Metal eyelets on hood to reinforce drawstring holes
- Ribbed knit fabric on waist & cuffs

UPF RATING  
EXCELLENT  
50+



## Y19324 CORE FLEECE CREW NECK JUMPER

SIZE XS–6XL

COLOUR Navy (NAV), Black (BLA)

- 320gsm, 65% polyester/35% cotton brushed fleece
- Kangaroo pouch pockets
- Two utility pockets on either side of garment
- Left sleeve twin pencil pocket in contrast fabric
- Ribbed knit fabric on waist, collar & cuffs



## Y19325 CORE HI VIS SPLICED BRUSHED FLEECE HOODIE

SIZE XS-6XL

COLOUR Orange/Navy (ONA), Yellow/Navy (YNA)

- 320gsm, 100% polyester
- Kangaroo pouch pockets
- Two utility pockets on either side of garment
- Left sleeve twin pencil pocket in contrast fabric
- Mesh hood lining
- Safety drawstring feature on hood ensures drawstring stays inside garment to prevent catching
- Metal eyelets on hood to reinforce drawstring holes
- Ribbed knit fabric on waist & cuffs

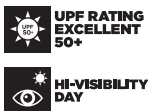


## Y19270 CORE HI VIS SPLICED 1/4 ZIP BRUSHED TAPED FLEECE JUMPER

SIZES 2XS-6XL

COLOURS Orange/Navy (ONA), Yellow/Navy (YNA)

- 320gsm, 100% Polyester brushed fleece
- Front one piece welt pocket with zip closures
- Pen pocket on left sleeve in contrast fabric
- Adjustable cord on hem for better fit
- 1/4 zip neck opening with stand up collar
- Ribbed knit fabric cuff
- 50mm reflective tape



## Y19330 CORE HI VIS SPLICED 1/4 ZIP BRUSHED FLEECE JUMPER

SIZES 2XS-6XL

COLOURS Yellow/Navy (YNA), Orange/Navy (ONA)

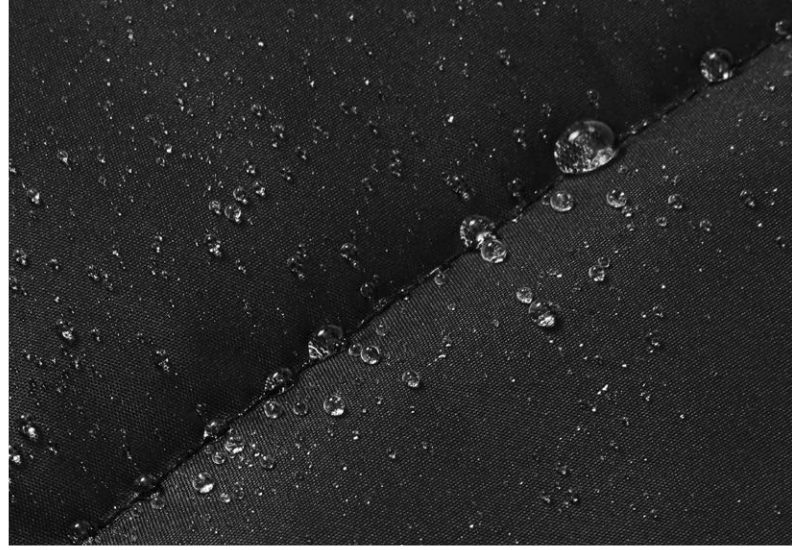
- 320gsm, 100% Polyester brushed fleece
- Front one piece welt pocket with zip closures
- Pen pocket on left sleeve in contrast fabric
- Adjustable cord on hem for better fit
- 1/4 zip neck opening with stand up collar
- Ribbed knit fabric cuff



# JACKETS







## DESCRIPTION

Stay warm on chilly days with our work wear 2.0 Puffa Jacket or Vest. Windproof, water resistant and is fitted with 3M Thinsulate Insulation to regulate body temperature in all conditions. With handy features like multipurpose zip pockets at the front chest and sides which include warm felt fabric lining this jacket will let you keep working even when the temperature drops!

### 3M THINSULATE INSULATION

Insulation made with 78% recycled polyester, from post-consumer waste materials, including recycled plastic bottles.



# PUFFA 2.0



## Y06723 3056 HOODED PUFFER JACKET

## Y21418 3056 PUFFER VEST

SIZE S-5XL

COLOUR Black (BLA)

- Outer fabric: 100% polyester 90gsm with PU coating
- Insulation made with 78% recycled polyester, from post-consumer waste materials, including recycled plastic bottles
- Durable Water Repellent fabrication finish
- Front lower and RHS chest zip closure pocket storage
- Curved back hem for weather and abrasion protection



# JACKETS



## Y06680 CORE WATERPROOF BOMBER JACKET

SIZE S-5XL

COLOUR Navy (NAV), Black (BLA)

- 135gsm, 100% polyester oxford weave with PU coating
- Waterproof and seam sealed
- Quilted lining for warmth
- Ribbed waistband, neck and cuffs for warmth
- Internal invisible zip on left side seam for client logo access
- 3 piece hood for shape and comfort
- Shoulder darts for better shape and fit
- Left sleeve pocket with additional pen pocket
- 2 welt pockets and one internal pocket
- Fabric water column rating: 10,000mm



## Y06675 CORE HI VIS SPLICED TAPED WATERPROOF BOMBER JACKET

SIZE S-5XL

COLOUR Yellow/Navy (YNA), Orange/Navy (ONA)

- 135gsm, polyester oxford weave with PU coating and taffeta lining
- Ribbed waistband, neck and cuffs for warmth
- Concealed hood
- Internal invisible zip on left side seam for client logo access
- Waterproof and seam sealed
- Quilted lining for warmth
- 50mm Reflectec tape
- Fabric water column rating: 10,000mm



**COMPLETE RANGE OF WET WEATHER JACKETS**



## Y06670 CORE HI VIS SPLICED WATERPROOF BOMBER JACKET

SIZE S-5XL

COLOUR Orange/Navy (ONA), Yellow/Navy (YNA)

- 135gsm, polyester oxford weave with PU coating and taffeta lining
- Waterproof and seam sealed
- Quilted lining for warmth
- Ribbed waistband, neck and cuffs for warmth
- Internal invisible zip on left side seam for client logo access
- 3 piece hood for shape and comfort
- Shoulder darts for better shape and fit
- Left sleeve pocket with additional pen pocket
- 2 welt pockets and one internal pocket
- Meets AS 4602.1:2011 for day use
- Fabric water column rating: 10,000mm



## Y06057 CORE HI VIS 4 IN 1 TAPED WATERPROOF JACKET SIZE 2XS-6XL

**COLOUR** Orange/Navy (ONA), Yellow/Navy (YNA)

- Outer jacket: 190gsm, polyester oxford weave with PU coating and taffeta lining; Vest: 190gsm, oxford with 280gsm, polar fleece internal
- Reversible inner vest
- 50mm reflective tape
- Waterproof and seam sealed; Fabric water column rating: 10,000mm
- Body & sleeves are 'T' shaped providing less seams and superior comfort
- Internal invisible zip for easy monogram access
- Peaked hood to prevent rain hitting the face
- Zip gusset for easy grab when zipping, chin guard & shaped storm flap for easy opening of the jacket



## Y06685 CORE HI VIS SPLICED TAPED QUILTED WATERPROOF JACKET

SIZE S-5XL

**COLOUR** Yellow/Navy (YNA), Orange/Navy (ONA)

- Outer jacket: 135gsm, 100% polyester oxford weave with PU coating
- Waterproof and seam sealed
- Quilted lining for warmth
- Internal invisible zip on left side seam for client logo access
- Shaped back hem for comfort, shorter in front for movement
- 3 piece hood for superior shape and comfort
- Hood folds into the collar for storage
- Chin guard for comfort and to avoid catching on skin
- External ID pocket
- Meets AS 4602.1:2011 for day and night use
- Fabric water column rating: 10,000mm



## Y06545 CORE HI VIS SPLICED TAPED DRILL JACKET SIZE S-4XL

**COLOUR** Orange/Navy (ONA), Yellow/Navy (YNA)

- 310gsm, 100% pre-shrunk cotton drill & cotton brushed lining
- 50mm reflective tape
- Large two way velcro flap front pockets & side mobile phone zip pockets
- Back pleats allowing movement
- Velcro closure on sleeve cuff

By choosing our cotton products, you're supporting our investment in Better Cotton's mission. These products are sourced via a system of mass balance and therefore may not contain Better Cotton.



## Y21480 CORE HI VIS H TAPED ALL WEATHER FLEECE VEST

SIZE S-6XL

**COLOUR** Yellow (YEL), Safety Orange (SOR)

- Outer: 190gsm, 100% polyester oxford with PU coating
- Inner: 280gsm, 100% polyester polar fleece
- Stand up collar
- ID pocket
- Welt pockets
- H tape configuration

# ACCESSORIES





Hard Yakko  
QUALITY GOODS / OUTER WEAR  
BRAND EST. 1980  
APPAREL DIVISION

# ACCESSORIES



## Y20110 3056 SOCK & BEANIE BUNDLE – 2 PACK

SIZE One Size

COLOUR Black (BLA), Yellow (YEL)

- Socks: 75% Cotton, 15% Polyester, 10% Elastane
- Beanie: 100% Acrylic, 76gsm, Waffle knit
- Waffle knit Beanie with Hard Yakka woven label at centre
- Soft hand feel and comfortable fit
- Crew sock with contrast heel and stripes
- Jacquard Hard Yakka logo on base of foot
- Ribbed elastic welt
- Pack is bundled with red Hard Yakka elastic band

**W** WOMEN'S SPECIFIC FIT



## Y08606 WOMEN'S 3056 COTTON RICH CREW SOCK – 3 PACK

SIZE AUS/UK 3–8

COLOUR Pink/Black Marle (PBM), Blue/Black Marle (BBZ)

- 75% Cotton / 15% Polyester / 10% Elastane
- Crew sock with contrast heel, stripes and footbase
- Jacquard Hard Yakka logo on base of foot
- Ribbed elastic welt



## Y20035 CORE PADDED COTTON RICH CREW WORK SOCK – 5 PACK

SIZE AUS/UK 7–12

COLOUR Multi (MLT), Black (BLA)

- 80% cotton / 17% polyester / 3% elastane
- Athletic design
- Padded footbed
- Seam-free toe

**W** WOMEN'S SPECIFIC FIT



## Y20120 WOMEN'S CORE COTTON RICH PADDED CREW WORK SOCK – 3 PACK

SIZE AUS/UK 3–8

COLOUR Multi (MLT)

- 75% cotton / 15% polyester / 10% elastane
- Athletic design
- Padded footbed
- Crew sock for use in boots

REPREVE



## Y22943 CORE CAMO SOCK & BEANIE BUNDLE

SIZE AUS/UK 7-12

COLOUR Multi (MLT)

- 85% Polyester / 10% Polyester / 5% Elastane
- 3 pairs of socks + 1 beanie per pack
- Camo design socks
- Military green beanie
- Made with 85% REPREVE® recycled polyester

WOMEN'S SPECIFIC FIT



## Y26455 WOMEN'S CORE BAMBOO SOCK – 3 PACK

SIZE AUS/UK 3-8

COLOUR Pink Marle (PIM), Black Pink (BPP)

- 80% Bamboo Viscose / 17% Nylon / 3% Elastane
- Made with viscose derived from bamboo
- A renewable resource
- Breathable, assisting your feet stay cool and dry
- Superior comfort and softness



STRETCH FABRIC



## Y26578 CORE STRETCH COTTON TRUNKS – 5 PACK

SIZE S-3XL

COLOUR Multi (BAC)

- Main fabric: 95% Cotton 5% Elastane 180gsm; Waistband: 70% Polyester, 30% Elastane
- Elastic waistband
- Cotton stretch fabric
- Naturally breathable
- Camo & solid colours
- Trunk design
- 5 pack

# ACCESSORIES



## Y26791 CORE STRETCH WEBBED BELT WITH BOTTLE OPENER BUCKLE

SIZE S (28-34"), M (32-38"), L (36-42"), XL (40-46")

COLOUR Black (BLA)

- Webbed woven 38mm strap
- Super Stretch – stretches up to 2 inches
- Embossed logo
- Bottle opener belt buckle



## Y22826 CORE EMBOSSED LEATHER & BRASS BUCKLE BELT

SIZE S (28-34"), M (32-38"), L (36-42"), XL (40-46")

COLOUR Black (BLA)

- 35mm width Genuine Leather strap
- Embossed logo
- Antique brass buckle plating



## Y09402 CORE LEATHER & BRASS BUCKLE BELT

SIZE BLA: 72R–127R; CHO: 72R–112R

COLOUR Black (BLA), Chocolate (CHO)

- Chocolate: Colorado oil tan leather & antique brass buckle
- Black: hand milled crazyhorse leather & satin nickel buckle
- Seven adjustable holes
- 35mm width
- Reinforced heavy duty stitching



## Y22301 3056 2 TONE MARLE BEANIE

SIZE One Size

COLOURS Aqua/Black Marle (ABM), Pink/Black Marle (PBM), Charcoal/Black Marle (BCR)

- 100% Acrylic, twisted two tone
- Beanie with Hard Yakka woven label at centre
- Soft hand feel and comfortable fit



## Y22370 CORE WORK BEANIE

SIZE One Size

COLOURS Black (BLA)

- 100% Acrylic
- Leather look embossed 3056 patch label on front
- Snug fit with relaxed top
- Wide cuff



## Y22980 CORE SHAPED EVA FOAM KNEE PADS

SIZE M (one size fits all)

COLOUR Black (BLA)

- Moulds to your knees – making it comfortable to wear
- Low density polyethylene/EVA contoured kneepads – built to last longer
- Tested to Australian standards – no damage to the knee pads after up to one million flexes
- Able to be cut down to size
- Versatile – suits Legends range of products including men's and women's



# FOOTWEAR





Hard Yakka



## Y60200 3056 130MM (5 INCH) SIDE ZIP BOOT

SIZE AU/UK 6–13 (7.5–10.5)

COLOUR Wheat

- Water Resistant Full Grain Leather Upper
- Quick Release Zipper
- Neoprene Hoodie – Zip Hold & Anti-Rub Protection
- Abrasion resistant scuff cap
- TPU Heel Stabiliser
- Durable rubber outsole, shock absorbing Phylon midsole
- Memory foam / PU footbed with ERP Pod comfort Technology
- Dri-Lex lining with Aegis® anti-microbial – Perspiration Absorption & Odour Control
- Ideal for Light Industrial, Warehousing & Logistics, Transport, Construction & General Trade
- Certified to AS 2210.3:2019



STEEL TOE CAP



300°C HEAT RESISTANT OUTSOLE



FUEL OIL & SLIP RESISTANT



CME MIDSOLE



ANTI-STATIC



MEMORY FOAM FOOTBED



WATER RESISTANT



benchmark PRODUCT CERTIFICATION



## Y60201 3056 130MM (5 INCH) SIDE ZIP BOOT

SIZE AU/UK 6–13 (7.5–10.5)

COLOUR Black

- Water Resistant Full Grain Leather Upper
- Quick Release Zipper
- Neoprene Hoodie – Zip Hold & Anti-Rub Protection
- Abrasion resistant scuff cap
- TPU Heel Stabiliser
- Durable rubber outsole, shock absorbing Phylon midsole
- Memory foam / PU footbed with ERP Pod comfort Technology
- Dri-Lex lining with Aegis® anti-microbial – Perspiration Absorption & Odour Control
- Ideal for Light Industrial, Warehousing & Logistics, Transport, Construction & General Trade
- Certified to AS 2210.3:2019



STEEL TOE CAP



300°C HEAT RESISTANT OUTSOLE



FUEL OIL & SLIP RESISTANT



CME MIDSOLE



ANTI-STATIC



MEMORY FOAM FOOTBED



WATER RESISTANT



benchmark PRODUCT CERTIFICATION



## Y60202 3056 130MM (5 INCH) SIDE ZIP BOOT

SIZE AU/UK 6–13 (full sizes only)

COLOUR Grey

- Water Resistant Full Grain Leather Upper
- Quick Release Zipper
- Neoprene Hoodie – Zip Hold & Anti-Rub Protection
- Abrasion resistant scuff cap
- TPU Heel Stabiliser
- Durable rubber outsole, shock absorbing Phylon midsole
- Memory foam / PU footbed with ERP Pod comfort Technology
- Dri-Lex lining with Aegis® anti-microbial – Perspiration Absorption & Odour Control
- Ideal for Light Industrial, Warehousing & Logistics, Transport, Construction & General Trade
- Certified to AS 2210.3:2019



STEEL TOE CAP



300°C HEAT RESISTANT OUTSOLE



FUEL OIL & SLIP RESISTANT



CME MIDSOLE



ANTI-STATIC



MEMORY FOAM FOOTBED



WATER RESISTANT



benchmark PRODUCT CERTIFICATION



## Y60203 3056 130MM (5 INCH) SIDE ZIP BOOT

SIZE AU/UK 6–13 (7.5–10.5)

COLOUR Olive

- Water Resistant Full Grain Leather Upper
- Quick Release Zipper
- Neoprene Hoodie – Zip Hold & Anti-Rub Protection
- Abrasion resistant scuff cap
- TPU Heel Stabiliser
- Durable rubber outsole, shock absorbing Phylon midsole
- Memory foam / PU footbed with ERP Pod comfort Technology
- Dri-Lex lining with Aegis® anti-microbial – Perspiration Absorption & Odour Control
- Ideal for Light Industrial, Warehousing & Logistics, Transport, Construction & General Trade
- Certified to AS 2210.3:2019



STEEL TOE CAP



300°C HEAT RESISTANT OUTSOLE



FUEL OIL & SLIP RESISTANT



CME MIDSOLE



ANTI-STATIC



MEMORY FOAM FOOTBED



WATER RESISTANT



benchmark PRODUCT CERTIFICATION



## Y60274 3056 130MM (5 INCH) SIDE ZIP BOOT

SIZE AU/UK 6–13 (full sizes only)

COLOUR Cedar

- Water Resistant Full Grain Leather Upper
- Quick Release Zipper
- Neoprene Hoodie – Zip Hold & Anti-Rub Protection
- Abrasion resistant scuff cap
- TPU Heel Stabiliser
- Durable rubber outsole, shock absorbing Phylon midsole
- Memory foam / PU footbed with ERP Pod comfort Technology
- Dri-Lex lining with Aegis® anti-microbial – Perspiration Absorption & Odour Control
- Ideal for Light Industrial, Warehousing & Logistics, Transport, Construction & General Trade
- Certified to AS 2210.3:2019



STEEL TOE CAP



300°C HEAT RESISTANT OUTSOLE



FUEL OIL & SLIP RESISTANT



CME MIDSOLE



ANTI-STATIC



MEMORY FOAM FOOTBED



WATER RESISTANT



benchmark PRODUCT CERTIFICATION







## Y60240 WOMEN'S 3056 130MM (5 INCH) SIDE ZIP BOOT

SIZE AU/US 4–11 (full sizes only)

COLOUR Wheat

- Water Resistant Full Grain Leather Upper
- Quick Release Zipper
- Neoprene Hoodie – Zip Hold & Anti-Rub Protection
- Abrasion resistant scuff cap
- TPU Heel Stabiliser
- Durable rubber outsole, shock absorbing Phylon midsole
- Memory foam / PU footbed with ERP Pod comfort Technology
- Dri-Lex lining with Aegis® anti-microbial – Perspiration Absorption & Odour Control
- Ideal for Light Industrial, Warehousing & Logistics, Transport, Construction & General Trade
- Certified to AS 2210.3:2019



WOMEN'S SPECIFIC FIT



STEEL TOE CAP



300°C HEAT RESISTANT OUTSOLE



FUEL OIL & SLIP RESISTANT



CME MIDSOLE



ANTI-STATIC



MEMORY FOAM FOOTBED



WATER RESISTANT



## Y60245 WOMEN'S 3056 130MM (5 INCH) SIDE ZIP BOOT

SIZE AU/US 4–11 (full sizes only)

COLOUR Black

- Water Resistant Full Grain Leather Upper
- Quick Release Zipper
- Neoprene Hoodie – Zip Hold & Anti-Rub Protection
- Abrasion resistant scuff cap
- TPU Heel Stabiliser
- Durable rubber outsole, shock absorbing Phylon midsole
- Memory foam / PU footbed with ERP Pod comfort Technology
- Dri-Lex lining with Aegis® anti-microbial – Perspiration Absorption & Odour Control
- Ideal for Light Industrial, Warehousing & Logistics, Transport, Construction & General Trade
- Certified to AS 2210.3:2019



WOMEN'S SPECIFIC FIT



STEEL TOE CAP



300°C HEAT RESISTANT OUTSOLE



FUEL OIL & SLIP RESISTANT



CME MIDSOLE



ANTI-STATIC



MEMORY FOAM FOOTBED



WATER RESISTANT



## Y60250 WOMEN'S 3056 130MM (5 INCH) SIDE ZIP BOOT

SIZE AU/US 4–11 (full sizes only)

COLOUR Shiraz

- Water Resistant Full Grain Leather Upper
- Quick Release Zipper
- Neoprene Hoodie – Zip Hold & Anti-Rub Protection
- Abrasion resistant scuff cap
- TPU Heel Stabiliser
- Durable rubber outsole, shock absorbing Phylon midsole
- Memory foam / PU footbed with ERP Pod comfort Technology
- Dri-Lex lining with Aegis® anti-microbial – Perspiration Absorption & Odour Control
- Ideal for Light Industrial, Warehousing & Logistics, Transport, Construction & General Trade
- Certified to AS 2210.3:2019



WOMEN'S SPECIFIC FIT



STEEL TOE CAP



300°C HEAT RESISTANT OUTSOLE



FUEL OIL & SLIP RESISTANT



CME MIDSOLE



ANTI-STATIC



MEMORY FOAM FOOTBED



WATER RESISTANT





## Y60120 UTILITY 130MM (5 INCH) SIDE ZIP BOOT

SIZE AU/UK 4–14 (7.5–10.5)

COLOUR Wheat

- Water Resistant Leather & Breathable Nylon Upper
- Quick Release Zipper
- Additional under foot Phylon Interlayer
- Nylon (Non-Metallic) Shank
- TPU Outsole, PU Midsole
- Dual Layer Memory foam / PU footbed
- Ideal for Light Industrial, Construction & General Trade
- Certified to AS 2210.3:2019



STEEL TOE CAP



TOE BUMPER



130°C HEAT RESISTANT OUTSOLE



FUEL OIL & SLIP RESISTANT



ANTI-STATIC



MEMORY FOAM FOOTBED



WATER RESISTANT



benchmark  
PRODUCT CERTIFICATION



## Y60125 UTILITY 130MM (5 INCH) SIDE ZIP BOOT

SIZE AU/UK 4–14 (7.5–10.5)

COLOUR Black

- Water Resistant Leather & Breathable Nylon Upper
- Quick Release Zipper
- Additional under foot Phylon Interlayer
- Nylon (Non-Metallic) Shank
- TPU Outsole, PU Midsole
- Dual Layer Memory foam / PU footbed
- Ideal for Light Industrial, Construction & General Trade
- Certified to AS 2210.3:2019



STEEL TOE CAP



TOE BUMPER



130°C HEAT RESISTANT OUTSOLE



FUEL OIL & SLIP RESISTANT



ANTI-STATIC



MEMORY FOAM FOOTBED



WATER RESISTANT



benchmark  
PRODUCT CERTIFICATION



## Y60235 NITE VISION SIDE ZIP BOOT

SIZE AU/UK 4–14 (7.5–10.5)

COLOUR Black

- Beacon Mesh Reflective Technology for Enhanced Visibility
- Water Resistant Leather & Breathable Nylon Upper
- Quick Release Zipper
- Dual Layer Memory foam / PU footbed
- Additional under foot Phylon Interlayer
- Nylon (Non-Metallic) Shank
- TPU Outsole, PU Midsole
- Ideal for Construction, General Purpose, Transport & Logistics
- Certified to AS.2210.3:2019



STEEL TOE CAP



TOE BUMPER



130°C HEAT RESISTANT OUTSOLE



SAFETY REFLECTIVE MESH UPPER



FUEL OIL & SLIP RESISTANT



ANTI-STATIC



MEMORY FOAM FOOTBED



benchmark  
PRODUCT CERTIFICATION



## Y60359 TOUGHMAXX 6Z BOOT

SIZE AU/UK 7 - 12 (Full sizes only)

COLOUR Wheat

- Water resistant full grain leather
- Wide profile steel toe cap
- Quick release side zipper
- Breathable mesh lining treated with anti-microbial protection for odour control
- PU / Memory foam footbed that molds to the individual foot
- PU outsole, PU midsole
- Anti-Static
- Ideal for Light Industrial, Construction & General Trade
- Certified to AS 2210.3:2019



STEEL TOE CAP



ANTI-STATIC



MEMORY FOAM FOOTBED



130°C HEAT RESISTANT OUTSOLE



## Y60360 TOUGHMAXX 6Z BOOT

SIZE AU/UK 7 - 12 (Full sizes only)

COLOUR Black

- Water resistant full grain leather
- Wide profile steel toe cap
- Quick release side zipper
- Breathable mesh lining treated with anti-microbial protection for odour control
- PU / Memory foam footbed that molds to the individual foot
- PU outsole, PU midsole
- Anti-Static
- Ideal for Light Industrial, Construction & General Trade
- Certified to AS 2210.3:2019



STEEL TOE CAP



ANTI-STATIC



MEMORY FOAM FOOTBED



130°C HEAT RESISTANT OUTSOLE





## Y60363 X-RANGE MID 130MM BOOT

SIZE Black

COLOUR AU/UK 6–14 (Full Sizes Only)

- Ripstop upper for extreme durability
- TPU upper protection guard
- REPREVE® lining
- Memory Foam footbed with enery rebound heel pods
- EVA super comfort & rebound midsole using the latest design technology in sports footwear
- Dual layer breathable mesh padded collar
- SRC superior slip resistant outsole also rated to 300°C
- Super light weight, perfect for warehousing and logistics
- Quick Release Zipper
- Certified to AS 2210.3:2019



## Y60280 ATOMIC 130MM (5 INCH) HYBRID SIDE ZIP BOOT

SIZE AU/UK 4–14 (full sizes only)

COLOUR Wheat

- Water Resistant Leather & Breathable Nylon Upper
- Hybrid Safety Hiker construction
- Quick Release Zipper
- Beacon Mesh Reflective Technology for enhanced visibility
- Lightweight, 655 grams
- Durable rubber outsole, CME midsole for energy rebound
- SRC rated for max slip resistance
- Memory foam / PU footbed with ERP Pod comfort Technology
- 100% metal free
- Ideal for Light Industrial, Warehousing & Logistics, Transport, Construction & General Trade
- Certified to AS 2210.3:2019



## Y60285 ATOMIC 130MM (5 INCH) HYBRID SIDE ZIP BOOT

SIZE AU/UK 4–14 (full sizes only)

COLOUR Black

- Water Resistant Leather & Breathable Nylon Upper
- Hybrid Safety Hiker construction
- Quick Release Zipper
- Beacon Mesh Reflective Technology for enhanced visibility
- Lightweight, 655 grams
- Durable rubber outsole, CME midsole for energy rebound
- SRC rated for max slip resistance
- Memory foam / PU footbed with ERP Pod comfort Technology
- 100% metal free
- Ideal for Light Industrial, Warehousing & Logistics, Transport, Construction & General Trade
- Certified to AS 2210.3:2019





## Y60364 X-RANGE LOW SHOE

SIZE Black

COLOUR AU/UK 6–14 (Full Sizes Only)

- Ripstop upper for extreme durability & breathability
- Added support of a Kintetic PU exo shell
- Lining made with REPREVE® recycled polyester, from post-consumer waste materials, including recycled PET bottles
- Memory Foam footbed with energy rebound heel pods
- Internal lace pocket to secure lace ends
- EVA super comfort & rebound midsole using the latest design technology in sports footwear
- SRC superior slip resistant outsole also rated to 300°C
- Super light weight, perfect for warehousing and logistics
- Certified to AS 2210.3:2019



COMPOSITE TOE CAP



300°C HEAT RESISTANT OUTSOLE



ANTI-STATIC



SRC MAX SLIP RESISTANT



MEMORY FOAM FOOTBED



LIGHT WEIGHT



REPREVE



benchmark PRODUCT CERTIFICATION



## Y60190 ICON LACE UP SPORT SAFETY

SIZE AU/UK 6–14 (full sizes only)

COLOUR Black

- Synthetic Knit Upper
- Beacon Mesh Reflective Technology for enhanced visibility
- Lightweight, 530 grams
- Durable rubber outsole, CME midsole for energy rebound
- SRC rated for max slip resistance
- Memory foam / PU footbed with ERP Pod comfort Technology
- Ideal for Warehousing & Logistics, Transport & General Trade
- Certified to AS 2210.3:2019



COMPOSITE TOE CAP



TOE BUMPER



300°C HEAT RESISTANT OUTSOLE



SAFETY REFLECTIVE MESH UPPER



CME MIDSOLE



ANTI-STATIC



SRC MAX SLIP RESISTANT



FUEL OIL & SLIP RESISTANT



MEMORY FOAM FOOTBED



benchmark PRODUCT CERTIFICATION





## Y60174 OUTBACK GUSSET PR

SIZE AU/UK 6–13 (7.5–10.5)

COLOUR Wheat

- Steel toe cap protection
- Premium Nubuck Leather
- REPREEVE® inner linings with premium 1.8mm-2mm leather counter
- Extra-long pull loops
- PU / Memory foam footbed that molds to the individual foot
- PU Midsole
- TPU outsole
- SRC rated slip resistant outsole
- Non-metallic puncture resistant plate
- Anti-Static
- Ideal for Building & Construction, Landscaping, Gardening & DIY, Farming & Agriculture
- Certified to AS 2210.3:2019, EN ISO 20345:2022, ASTM F2413-18



## Y60175 OUTBACK GUSSET PR

SIZE AU/UK 6–13 (7.5–10.5)

COLOUR Black

- Steel toe cap protection
- Premium Full Grain Leather
- REPREEVE® inner linings with premium 1.8mm-2mm leather counter
- Extra-long pull loops
- PU / Memory foam footbed that molds to the individual foot
- PU Midsole
- TPU outsole
- SRC rated slip resistant outsole
- Non-metallic puncture resistant plate
- Anti-Static
- Ideal for Building & Construction, Landscaping, Gardening & DIY, Farming & Agriculture
- Certified to AS 2210.3:2019, EN ISO 20345:2022, ASTM F2413-18



## Y60177 OUTBACK GUSSET PR

SIZE AU/UK 6–13 (7.5–10.5)

COLOUR Brown

- Steel toe cap protection
- Premium Waxy Full Grain Leather
- REPREEVE® inner linings with premium 1.8mm-2mm leather counter
- Extra-long pull loops
- PU / Memory foam footbed that molds to the individual foot
- PU Midsole
- TPU outsole
- SRC rated slip resistant outsole
- Non-metallic puncture resistant plate
- Anti-Static
- Ideal for Building & Construction, Landscaping, Gardening & DIY, Farming & Agriculture
- Certified to AS 2210.3:2019, EN ISO 20345:2022, ASTM F2413-18







## Y60087 GRIT ELASTIC GUSSET

SIZE AU/UK 6–13 (full sizes only)

COLOUR Sand

- Genuine Suede Upper
- Quality elastic gore
- Nylon (Non-Metallic) Shank
- PU Outsole, PU Midsole
- Dual Layer Memory foam / PU footbed
- Ideal for Light Industrial, General Trade & DIY
- Certified to AS 2210.3:2019



STEEL TOE CAP



130°C HEAT RESISTANT OUTSOLE



TOE BUMPER



FUEL OIL & SLIP RESISTANT



ANTI-STATIC



MEMORY FOAM FOOTBED



WATER RESISTANT



benchmark  
PRODUCT CERTIFICATION



## Y60088 GRIT ELASTIC GUSSET

SIZE AU/UK 6–13 (full sizes only)

COLOUR Black

- Water Resistant Leather Upper
- Quality elastic gore
- Nylon (Non-Metallic) Shank
- PU Outsole, PU Midsole
- Dual Layer Memory foam / PU footbed
- Ideal for Light Industrial, General Trade & DIY
- Certified to AS 2210.3:2019



STEEL TOE CAP



130°C HEAT RESISTANT OUTSOLE



TOE BUMPER



FUEL OIL & SLIP RESISTANT



ANTI-STATIC



MEMORY FOAM FOOTBED



WATER RESISTANT



benchmark  
PRODUCT CERTIFICATION



## Y60085 GRAVEL 150MM (6 INCH) LACE BOOT

SIZE U/UK 5–13 (full sizes only)

COLOUR Sand

- Genuine Suede Upper
- Padded collar for extra comfort
- Nylon (Non-Metallic) Shank
- PU Outsole, PU Midsole
- Dual Layer Memory foam / PU footbed
- Ideal for Light Industrial, General Trade & DIY
- Certified to AS 2210.3:2019



STEEL TOE CAP



130°C HEAT RESISTANT OUTSOLE



TOE BUMPER



FUEL OIL & SLIP RESISTANT



ANTI-STATIC



MEMORY FOAM FOOTBED



WATER RESISTANT



benchmark PRODUCT CERTIFICATION



## Y60086 GRAVEL 150MM (6 INCH) LACE BOOT

SIZE AU/UK 3–15 (7.5–10.5)

COLOUR Black

- Water Resistant Leather Upper
- Padded collar for extra comfort
- Nylon (Non-Metallic) Shank
- PU Outsole, PU Midsole
- Dual Layer Memory foam / PU footbed
- Ideal for Light Industrial, General Trade & DIY
- Certified to AS 2210.3:2019



STEEL TOE CAP



130°C HEAT RESISTANT OUTSOLE



TOE BUMPER



FUEL OIL & SLIP RESISTANT



ANTI-STATIC



MEMORY FOAM FOOTBED



WATER RESISTANT



benchmark PRODUCT CERTIFICATION



## Y60178 E.R.P. FOOTBED

SIZE AU/UK 4–5, 6–8, 9–11, 12–14

COLOUR Black

- Energy Rebound Pods (ERP) cushioning provides the perfect amount of softness with added energy return for all-day cushioning comfort
- Memory foam instantly molds to the foot to offer personalised comfort
- Anatomically contoured insole cradles the foot to provide maximum comfort and support
- The dynamic design adapts to all foot shapes for maximum support and comfort
- Insoles are trim to fit, fit and trim again as required



ENERGY REBOUND PODS



LIGHT WEIGHT



MEMORY FOAM FOOTBED





**Hard Yakka**

**NOTHING'S TOUGHER**

# FITTING GUIDE

## MEN'S

MEN'S PANT/SHORT – REGULAR	67R	72R	77R	82R	87R	92R	97R	102R	107R	112R	117R	122R		
MEN'S PANT – STOUT					87S	92S	97S	102S	107S	112S	117S	122S	127S	132S
FITS WAIST (CM)	67	72	77	82	87	92	97	102	107	112	117	122	127	132
FITS WAIST (IN)	26	28	30	32	34	36	38	40	42	44	46	48	50	52
PANT IN LEG SEAM – REGULAR	83	83	83	83	83	83	83	83	83	83	83	83		
PANT IN LEG SEAM – STOUT					78	78	78	78	78	78	78	78	78	78

MEN'S PANT – LONG	74L	79L	84L	89L	94L									
FITS WAIST (CM)	74	79	84	89	94									
FITS WAIST (IN)	29	31	33	35	37									
PANT IN LEG SEAM – LONG	88	88	88	88	88									

MEN'S COVERALL – REGULAR	67R	72R	77R	82R	87R	92R	97R	102R	107R	112R	117R	122R		
MEN'S COVERALL – STOUT					87S	92S	97S	102S	107S	112S	117S	122S	127S	132S
FITS WAIST (CM)	67	72	77	82	87	92	97	102	107	112	117	122	127	132
FITS WAIST (IN)	26	28	30	32	34	36	38	40	42	44	46	48	50	52
FITS CHEST – REGULAR (CM)	77	82	87	92	97	102	107	112	117	122	127	132		
FITS CHEST – STOUT (CM)					97	102	107	112	117	122	127	132	137	142
IN LEG SEAM – REGULAR	70	73	76	79	81	84	85	86	87	88	88	88	88	89
IN LEG SEAM – STOUT					71	74	76	79	81	82	83	85	86	86

MEN'S COVERALL – LONG	74L	79L	84L	89L	94L									
FITS WAIST (CM)	74	79	84	89	94									
FITS WAIST (IN)	29	31	33	35	37									
FITS CHEST (CM)	87	92	97	102	107									
IN LEG SEAM – LONG	81	83	85	88	90									

MEN'S SHIRT/POLO/TEE/FLEECE/JACKET	XXS	XS	S	M	L	XL	2XL	3XL	4XL	5XL	6XL		
FITS CHEST (CM)	82	87	92	97	102	110	118	126	134	142	150		

## WOMEN'S

WOMEN'S PANT/SHORT	6	8	10	12	14	16	18	20	22	24		
FITS NATURAL WAIST (CM)	62	67	72	77	82	87	95	103	108	113		
FITS HIP	88	93	98	103	108	113	121	129	134	139		

WOMEN'S POLO/TEE/FLEECE	2XS	XS	S	M	L	XL	2XL	3XL	4XL	5XL		
FITS BUST	80	85	90	98	106	114	122	130	138	146		

WOMEN'S SHIRT	6	8	10	12	14	16	18	20	22	24		
FITS BUST	80	85	90	96	102	108	116	124	130	136		

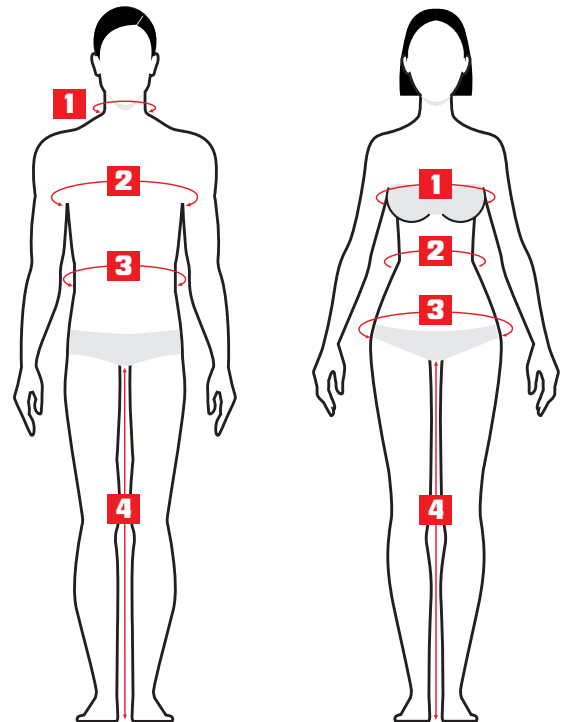
# FITTING GUIDE

## MEASURING GUIDELINES

Each tailor and patternmaker has his or her way of measuring. This fitting guide will help to ensure a consistency of approach.

- Do not take your measurements yourself
- Ask a professional dressmaker or tailor to take your measurements for more accuracy
- Wear light clothing as thicker garments like jumpers and jeans will add to measurements
- Remove items from pockets such as wallets in the back hip pocket
- Measure with the tape flat against the body
- Do not hold the tape too loose or too tight
- Do not put fingers under the tape

- 1. CHEST/BUST** CM Measure around the body across the fullest part of the chest, keeping the tape level and straight.
- 2. WAIST** CM Women: Measure around the natural waistline, keeping the tape level and straight. Men: Measure the waist where they wear their pants.
- 3. HIP/SEAT** CM Women only: Measure at the widest point (approximately 20–23cm) below the waist. At this position the tape should slide easily up, down and over the bottom.
- 4. NECK/COLLAR** CM Men only: Measure the circumference at the base of the neck, where a shirt collar would sit or using a well fitting shirt, lay flat on table, measure from centre of button to centre of button hole.
- 5. IN-LEG LENGTH** CM Measure from crotch to floor without shoes.



## FIT GUIDE



### SLIM

Close fit, Slim through the hip, thigh and leg.



### STRAIGHT

Modern, easy fit, accommodating a wide range of movement for all day comfort.



### RELAXED

Generous fit with plenty of room to move.



### REGULAR

Cut for a comfortable and functional fit for athletic body types. Only for tops.

## CONTACT US

The Workwear Group offers flexible electronic ordering solutions for our customers.

Workwear Online offers you 24 hour access to manage your account. It is a quick and simple way to order your workwear online. Our e-trading solutions are security enabled, offer flexible payment methods, track and trace, available stock visibility, order status and history, invoice and credit copy downloads, catalogue downloads, customisation of ranges/favourites and more.

For online ordering, simply request secure access to [www.workweargrouponline.com.au](http://www.workweargrouponline.com.au) via your Account Manager / Sales Representative.

### PLACING ORDERS

1. Log in to [www.workweargrouponline.com.au](http://www.workweargrouponline.com.au)
2. Browse products by selecting the Hard Yakka catalogue or by entering the style name/product number in the "Product Search" field.

3. Select the product by clicking on the name or image of your choice.
4. Enter the quantity in the desired size/colour box.
5. Add the selected products to your shopping cart by clicking "Add to Cart" at the bottom right corner of the screen.
6. To add more products, repeat steps 1-5.
7. When you have finished filling your Shopping Cart, place the order with Hard Yakka by following 3 quick steps:
  - a. Go to Cart/Checkout
  - b. Review your items and click on "Checkout" where your own order reference number can be added at this stage
  - c. Click "Place Order" (an email will be sent to your registered email address as confirmation of your order)

Please note printed stock availability dates in this catalogue are an indication only and may be subject to change.

For further assistance, please contact your Sales Representative or contact our Customer Service on 1800 720 544.

# HI-VIS STANDARDS



## HI-VIS DAY

Y07730 - Core Hi-Vis  
Long Sleeve Shirt



## HI-VIS NIGHT

Y07227 - Hi-Vis Cotton Drill  
Long Sleeve Shirt With Tape



## HI-VIS DAY/NIGHT

Y07740 - Core Hi-Vis  
Long Sleeve Shirt With Tape

## HARD YAKKA HIGH VISIBILITY WORKWEAR MEETS OR EXCEEDS AUSTRALIAN STANDARDS AS/NZS 1906.4 & AS 4602.1\*

According to the Australian Standards, materials classified as high visibility for daytime use must be manufactured from a durable fabric of woven or knitted cotton or equivalent man-made fibre that contains a fluorescent pigment or other high visibility dye. These materials are subjected to the following tests and must meet or exceed specified minimum requirements for:

- Daylight colour and luminance factor
- Colour fastness to light
- Colour fastness to washing
- Colour fastness to perspiration

In some cases, for safety reasons, a garment must be made from a natural fibre incapable of retaining a fluorescent colour. In these instances, the material is tested for luminance for non-fluorescent materials.

Alternatively, man-made fibres are generally capable of retaining a fluorescent colour and are therefore tested for luminance for fluorescent materials. The fabrics used in the manufacture of Hard Yakka high visibility workwear are tested and must meet or exceed specified minimum requirements for:

- Chromaticity
- Luminance for fluorescent materials or
- Luminance for non-fluorescent materials

Things to know about high visibility standards:

- Class D means the garments meets AS 4602.1 for daytime use only.
- Class N means the garments meets AS 4602.1 for night time use only.
- Class D/N means the garments meets AS 4602.1 for day or night time use.
- Bottoms (pants and shorts) are not part of the high visibility standards and therefore do not comply with AS 4602.1.

### IMPORTANT: LIMITATIONS OF USE.

Under no circumstances should Class D garments be worn for visibility purposes at night. Any markings, attachments, screen prints or other alterations, accessories or coverings not incorporated into the original product may not only void the garment compliance with the appropriate standard, they may also put the user at risk by reducing the high visibility area of the garment. The high visibility properties offered by Hard Yakka high visibility may be lessened due to normal wear over time. Hard Yakka high visibility garments using natural fibres have been tested and comply to Australian Standards AS/NZS 1906.4 in dry conditions. Wet conditions may alter the compliance of these fabrics to the standard and appropriate care should be taken.

# UPF RATINGS

**HARD YAKKA KNOWS A THING OR TWO ABOUT AUSTRALIA'S UNIQUE WORK CONDITIONS. THAT'S WHY MOST HARD YAKKA WORKWEAR IS RATED UPF 50+ FOR EXCELLENT PROTECTION AGAINST THE HARSH AUSTRALIAN SUN.**

Garments are classified based on the ultraviolet protection factor (UPF).

The UV protection of fabric depends on the content, fabric construction and colour. UPF rates how effectively a piece of clothing shields against the sun.

It is based on the content, weight, colour of the fabric and indicates how much UV can penetrate the fabric. For instance, a shirt with a UPF of 50 allows just 1/50th of the sun's UV radiation to reach your skin.

The UPF rating is for the fabric and does not address the amount of protection which is afforded by the design of the article. Articles which have been designed to cover the maximum area of the body are recommended.

The protection offered by garments may be lessened:

1. if the fabric is stretched;
2. if the fabric is wet; and
3. with time, due to the effects of normal wear. Fabric has been rated in accordance to AS/NZS 4399:2020.



# INDUSTRY GUIDE



## WHITE

- Painters ■ Plasterers
- Hospitals

Most painters wear white because it doesn't contrast or highlight white paint drops. White workwear is also easy to bleach and remove paint from. Key Items: Y02500 Foundations Drill Cargo Pant, Y05500 Foundations Drill Cargo Short, Y07500 Foundations Cotton Drill Shirt L/SL, Y01555 Foundations Tradesman Cotton Drill Action Back Overall



## BLACK

- All Trades

Black workwear hides grease and generally most dirt, allowing the wearer to maintain a professional appearance, no matter what the task at hand involves. Key Items: Y02202 Legends Pant, Y11306 Foundations Pique S/SL Polo



## LIGHT BLUE

- Mechanics

Mechanics need to ensure that their workwear is comfortable and lightweight yet protective. Buttons and studs should be covered to ensure they do not catch or scratch car or motorcycle paint work. Key Item: Y00015 Foundations Poly Cotton Coverall Light Blue



## KHAKI

- Carpenters ■ Landscapers
- Construction

Khaki coloured workwear is generally worn by those who work with wood or earth as dirt and wood shavings are well disguised. Key Items: Y02501 Foundations Drill Pant, Y01010 Foundations Bib & Brace Cotton Drill Overall, Y07393 Legends Ripstop S/SL Shirt



## NAVY

- Plumbers ■ Electricians
- Mechanics

Navy workwear hides dirt, grease and grime, allowing the wearer to maintain a professional appearance even in the dirtiest of working conditions. Key Items: Y07510 Foundations Cotton Drill S/SL Shirt, Y11363 Foundations Crew Neck S/SL T-Shirt, Y05038 Legends 3D Stretch Short



## GREEN

- Agriculture ■ Councils

Green is a natural colour traditionally associated with those who work outdoors in agriculture. Councils also use this colour to distinguish their workforce. Key Item: Y01555 Foundations Tradesman Cotton Drill Action Back Overall Green



# STYLE INDEX

STYLE	PAGE	STYLE	PAGE	STYLE	PAGE
<b>Y00010</b> CORE COTTON DRILL COVERALLS	75	<b>Y02960</b> CORE LIGHTWEIGHT CARGO COTTON DRILL PANTS	45	<b>Y05545</b> CORE ELASTIC COTTON DRILL SHORTS	54
<b>Y00015</b> CORE LIGHTWEIGHT POLY-COTTON COVERALLS	76	<b>Y02965</b> CORE LIGHTWEIGHT CARGO COTTON DRILL TAPED PANTS	45	<b>Y05620</b> CORE RELAXED FIT COTTON CARGO DRILL SHORTS	54
<b>Y00030</b> CORE LIGHTWEIGHT COTTON DRILL COVERALLS	76	<b>Y03041</b> LEGENDS HEAVY DUTY COTTON CARGO JEANS (WITH KNEE PAD OPTION)	40	<b>Y06057</b> CORE HI VIS 4 IN 1 TAPED WATERPROOF JACKET	97
<b>Y00262</b> CORE HI VIS SPLICED H TAPED COTTON DRILL COVERALLS	74	<b>Y03105</b> HERITAGE SLIM FIT WORK JEANS	40	<b>Y06545</b> CORE HI VIS SPLICED TAPED DRILL JACKET	97
<b>Y00270</b> CORE HI VIS SPLICED H TAPED COTTON DRILL COVERALLS	74	<b>Y03400</b> 3056 DYNEEMA® SLIM FIT HEAVY DUTY WORK JEANS	36	<b>Y06670</b> CORE HI VIS SPLICED WATERPROOF BOMBER JACKET	96
<b>Y01010</b> CORE BIB & BRACE CROSS BACK COTTON DRILL OVERALLS	75	<b>Y03513</b> CORE ENZYME WASHED STRAIGHT LEG TAPED JEANS	46	<b>Y06675</b> CORE HI VIS SPLICED TAPED WATERPROOF BOMBER JACKET	96
<b>Y01055</b> CORE HI VIS SPLICED ACTION BACK TAPED COTTON DRILL OVERALLS	74	<b>Y03514</b> CORE HEAVY DUTY WASHED JEANS	47	<b>Y06680</b> CORE WATERPROOF BOMBER JACKET	96
<b>Y01526</b> CORE HI VIS SPLICED ACTION BACK COTTON DRILL OVERALLS	74	<b>Y03875</b> CORE MOLESKIN HEAVY DUTY WORK JEANS	47	<b>Y06685</b> CORE HI VIS SPLICED TAPED QUILTED WATERPROOF JACKET	97
<b>Y01555</b> CORE ACTION BACK COTTON DRILL OVERALLS	75	<b>Y03876</b> CORE MOLESKIN PLAIN FRONT WORK JEANS	47	<b>Y06723</b> 3056 HOODED PUFFER JACKET	95
<b>Y02202</b> LEGENDS HEAVY DUTY COTTON CARGO PANTS	39	<b>Y04006</b> CORE LONG SLEEVE CLOSED FRONT CHECK FLANNEL SHIRT	59	<b>Y07227</b> CORE HI VIS LONG SLEEVE HEAVYWEIGHT TAPED DRILL SHIRT	66
<b>Y02204</b> 3056 TOUGHMAXX WORK PANTS	34	<b>Y04265</b> CORE HI VIS LONG SLEEVE LIGHTWEIGHT BIOMOTION VIC RAIL SHIRT	67	<b>Y07295</b> LEGENDS LONG SLEEVE CHECK FLANNEL SHIRT	59
<b>Y02205</b> 3056 X-RANGE PANTS	34	<b>Y04275</b> CORE HI VIS LONG SLEEVE LIGHTWEIGHT BIOMOTION X BACK TAPED SHIRT	67	<b>Y07500</b> CORE LONG SLEEVE HEAVYWEIGHT COTTON DRILL SHIRT	68
<b>Y02210</b> LEGENDS XTREME HEAVY DUTY COTTON CARGO PANTS	39	<b>Y04605</b> CORE HI VIS LONG SLEEVE HEAVYWEIGHT COTTON DRILL SHIRT	62	<b>Y07510</b> CORE SHORT SLEEVE HEAVYWEIGHT COTTON DRILL SHIRT	68
<b>Y02255</b> 3056 RIPSTOP UTILITY COTTON CARGO PANTS	38	<b>Y04610</b> CORE HI VIS LONG SLEEVE HEAVYWEIGHT SPLICED TAPED COTTON DRILL SHIRT	62	<b>Y07530</b> CORE LONG SLEEVE CLOSED FRONT HEAVYWEIGHT DRILL SHIRT	68
<b>Y02300</b> CORE VENTED COTTON CARGO PANTS	43	<b>Y04615</b> CORE HI VIS LONG SLEEVE CLOSED FRONT HEAVYWEIGHT TAPED COTTON DRILL SHIRT	62	<b>Y07540</b> CORE SHORT SLEEVE CLOSED FRONT HEAVYWEIGHT DRILL SHIRT	68
<b>Y02340</b> 3056 RIPSTOP UTILITY CUFFED COTTON CARGO PANTS	38	<b>Y04620</b> CORE HI VIS SHORT SLEEVE LIGHTWEIGHT SPLICED VENTED DRILL SHIRT	63	<b>Y07558</b> CORE HI VIS LONG SLEEVE LIGHTWEIGHT SPLICED VENTED DRILL SHIRT (SOLID BACK)	64
<b>Y02411</b> CORE STRETCH CUFFED CARGO TAPED PANTS	46	<b>Y04625</b> CORE SHORT SLEEVE LIGHTWEIGHT VENTED DRILL SHIRT	69	<b>Y07559</b> CORE HI VIS SHORT SLEEVE LIGHTWEIGHT SPLICED VENTED DRILL SHIRT (SOLID BACK)	65
<b>Y02441</b> 3056 RAPTOR ACTIVE PANTS	34	<b>Y04630</b> CORE LONG SLEEVE LIGHTWEIGHT VENTED DRILL SHIRT	69	<b>Y07590</b> CORE LONG SLEEVE PERMANENT PRESS SHIRT	70
<b>Y02500</b> CORE HEAVYWEIGHT CARGO COTTON DRILL PANTS	43	<b>Y05066</b> LEGENDS HEAVY DUTY COTTON CARGO SHORTS	53	<b>Y07591</b> CORE SHORT SLEEVE PERMANENT PRESS SHIRT	70
<b>Y02501</b> CORE PLEATED FRONT HEAVYWEIGHT COTTON DRILL PANTS	43	<b>Y05067</b> CORE STRETCH CARGO SHORTS	55	<b>Y07691</b> CORE SHORT SLEEVE PERMANENT PRESS SHIRT WITH EPAULETTES	70
<b>Y02530</b> CORE PLEATED FRONT COTTON DRILL PANTS	44	<b>Y05100</b> 3056 RIPSTOP UTILITY CARGO SHORTS	53	<b>Y07735</b> CORE HI VIS SHORT SLEEVE LIGHTWEIGHT SPLICED TAPED VENTED DRILL SHIRT	64
<b>Y02540</b> CORE COTTON DRILL TAPED PANTS	42	<b>Y05115</b> 3056 RIPSTOP UTILITY SHORT SHORTS	53	<b>Y07752</b> CORE LONG SLEEVE CHECK FLANNEL SHIRT	58
<b>Y02552</b> 3056 ACTIVE FLEECE CUFFED JOGGER	37	<b>Y05160</b> 3056 RAPTOR ACTIVE MID LENGTH SHORTS	52	<b>Y07754</b> CORE HI VIS SHORT SLEEVE LIGHTWEIGHT SPLICED TAPED VENTED DRILL SHIRT	65
<b>Y02570</b> CORE CARGO COTTON DRILL PANTS	44	<b>Y05161</b> 3056 RAPTOR ACTIVE SHORT SHORTS	52	<b>Y07899</b> CORE HI VIS LONG SLEEVE CLOSED FRONT HEAVYWEIGHT TAPED COTTON DRILL SHIRT	66
<b>Y02575</b> CORE CARGO COTTON DRILL TAPED PANTS	42	<b>Y05164</b> 3056 TOUGHMAXX WORK SHORT SHORTS	51	<b>Y07910</b> CORE LONG SLEEVE LIGHTWEIGHT SPLICED TAPED VENTED DRILL SHIRT	60
<b>Y02586</b> 3056 RAPTOR ACTIVE CUFFED TAPED PANTS	35	<b>Y05165</b> 3056 TOUGHMAXX WORK MID LENGTH SHORTS	51	<b>Y07940</b> CORE HI VIS LONG SLEEVE LIGHTWEIGHT SPLICED TAPED VENTED DRILL SHIRT	63
<b>Y02594</b> CORE PERMANENT PRESS PANT	46	<b>Y05166</b> 3056 X-RANGE SHORT SHORTS	50	<b>Y07950</b> CORE HI VIS LONG SLEEVE LIGHTWEIGHT SPLICED VENTED DRILL SHIRT	64
<b>Y02596</b> CORE STRETCH PANTS	45	<b>Y05167</b> 3056 X-RANGE MID LENGTH SHORTS	50	<b>Y07978</b> CORE HI VIS LONG SLEEVE LIGHTWEIGHT SPLICED TAPED VENTED DRILL SHIRT (SOLID BACK)	65
<b>Y02597</b> CORE STRETCH CARGO PANTS	45	<b>Y05190</b> 3056 CANVAS CARGO SHORTS	53	<b>Y07984</b> CORE HI VIS LONG SLEEVE CLOSED FRONT HEAVYWEIGHT SPLICED GUSSET SLEEVE DRILL SHIRT (SOLID BACK)	63
<b>Y02615</b> CORE BIOMOTION TAPED COTTON DRILL PANTS	42	<b>Y05340</b> CORE RELAXED COTTON DRILL SHORT WITH SIDE TABS	54		
<b>Y02717</b> 3056 RAPTOR ACTIVE CUFFED PANTS	35	<b>Y05350</b> CORE RELAXED COTTON DRILL SHORTS WITH BELT LOOPS	54		
<b>Y02740</b> LEGENDS SLIM STRETCH PANTS	39	<b>Y05500</b> CORE COTTON CARGO DRILL SHORTS	55		
<b>Y02855</b> 3056 STRETCH CANVAS TAPED CARGO PANTS	37				
<b>Y02880</b> 3056 CANVAS CARGO PANTS	37				
<b>Y02906</b> LEGENDS LIGHTWEIGHT COTTON CARGO PANTS	38				

STYLE	PAGE
<b>Y07990</b> CORE HI VIS LONG SLEEVE HEAVYWEIGHT SPLICED TAPED DRILL SHIRT	62
<b>Y07996</b> CORE HI VIS LONG SLEEVE LIGHTWEIGHT TAPED VENTED DRILL SHIRT	66
<b>Y08060</b> 3056 WOMEN'S X-RANGE CROP TOP	86
<b>Y08061</b> WOMEN'S 3056 X-RANGE LEGGINGS	34
<b>Y08079</b> WOMEN'S LEGENDS HEAVY DUTY CARGO PANTS	39
<b>Y08225</b> WOMEN'S CORE HI VIS LONG SLEEVE LIGHTWEIGHT SPLICED VENTED DRILL SHIRT	65
<b>Y08227</b> WOMEN'S 3056 DENIM JEGGINGS	36
<b>Y08228</b> WOMEN'S 3056 RAPTOR ACTIVE MID LENGTH SHORTS	52
<b>Y08302</b> WOMEN'S 3056 TAPED DENIM JEGGINGS	36
<b>Y08380</b> WOMEN'S CORE BIOMOTION TAPED CARGO DRILL PANTS	42
<b>Y08381</b> WOMEN'S CORE CARGO DRILL PANTS	44
<b>Y08382</b> WOMEN'S 3056 RAPTOR ACTIVE CUFFED PANTS	35
<b>Y08411</b> WOMEN'S 3056 RAPTOR ACTIVE CUFFED TAPED PANTS	35
<b>Y08420</b> WOMEN'S CORE HI VIS LONG SLEEVE LIGHTWEIGHT BIOMOTION X BACK TAPED SHIRT	67
<b>Y08421</b> WOMEN'S CORE HI VIS LONG SLEEVE LIGHTWEIGHT BIOMOTION VIC RAIL SHIRT	67
<b>Y08423</b> WOMEN'S CORE HI VIS LONG SLEEVE LIGHTWEIGHT SPLICED VENTED DRILL SHIRT	64
<b>Y08497</b> WOMEN'S 3056 RAPTOR ACTIVE SHORT SHORTS	52
<b>Y08601</b> WOMEN'S CORE HI VIS SHORT SLEEVE SPLICED POLO	81
<b>Y08602</b> WOMEN'S CORE HI VIS SHORT SLEEVE SPLICED SEGMENTED TAPED POLO	81
<b>Y08603</b> WOMEN'S CORE HI VIS LONG SLEEVE SPLICED POLO	80
<b>Y08604</b> WOMEN'S CORE HI VIS LONG SLEEVE SPLICED SEGMENTED TAPED POLO	80
<b>Y08606</b> WOMEN'S 3056 COTTON RICH CREW SOCK – 3 PACK	100
<b>Y08744</b> WOMEN'S LEGENDS LONG SLEEVE CHECK FLANNEL SHIRT	59
<b>Y08805</b> WOMEN'S CORE HI VIS LONG SLEEVE LIGHTWEIGHT SPLICED TAPED VENTED DRILL SHIRT	63
<b>Y08806</b> WOMEN'S CORE HI-VIS LONG SLEEVE LIGHTWEIGHT SPLICED TAPED VENTED DRILL SHIRT	60
<b>Y08812</b> WOMEN'S 3056 GLADIATOR DENIM JEGGINGS	36
<b>Y08840</b> WOMEN'S CORE COTTON DRILL PANTS	44
<b>Y08850</b> WOMEN'S CORE HEAVYWEIGHT COTTON CARGO DRILL PANTS	43
<b>Y08930</b> WOMEN'S 3056 RIPSTOP SLIM FIT CARGO PANTS	38

STYLE	PAGE
<b>Y09402</b> CORE LEATHER & BRASS BUCKLE BELT	102
<b>Y11306</b> CORE SHORT SLEEVE POLO	83
<b>Y11307</b> CORE LONG SLEEVE POLO	82
<b>Y11379</b> CORE HI VIS LONG SLEEVE SPLICED SEGMENTED TAPED VENTED POLO	82
<b>Y11383</b> CORE HI VIS SHORT SLEEVE SPLICED SEGMENTED TAPED VENTED POLO	83
<b>Y11389</b> CORE HI VIS LONG SLEEVE SPLICED VENTED POLO	82
<b>Y11396</b> CORE HI VIS SHORT SLEEVE SPLICED VENTED POLO	83
<b>Y19251</b> CORE SHORT SLEEVE TEE	87
<b>Y19270</b> CORE HI VIS SPLICED 1/4 ZIP BRUSHED TAPED FLEECE JUMPER	91
<b>Y19324</b> CORE FLEECE CREW NECK JUMPER	90
<b>Y19325</b> CORE HI VIS SPLICED BRUSHED FLEECE HOODIE	91
<b>Y19326</b> CORE FLEECE WORKWEAR HOODIE	90
<b>Y19330</b> CORE HI VIS SPLICED 1/4 ZIP BRUSHED FLEECE JUMPER	91
<b>Y19542</b> CORE FLEECE HOODIE WITH ZIP	90
<b>Y19559</b> 3056 X-RANGE PERFORMANCE TEE	86
<b>Y19616</b> CORE HI VIS SHORT SLEEVE SPLICED POLO	81
<b>Y19617</b> CORE HI VIS LONG SLEEVE SPLICED POLO	80
<b>Y19618</b> CORE HI VIS SHORT SLEEVE SPLICED SEGMENTED TAPED POLO	81
<b>Y19619</b> CORE HI VIS LONG SLEEVE SPLICED SEGMENTED TAPED POLO	80
<b>Y20035</b> CORE PADDED COTTON RICH CREW WORK SOCK – 5 PACK	100
<b>Y20110</b> 3056 SOCK & BEANIE BUNDLE – 2 PACK	100
<b>Y20120</b> WOMEN'S CORE COTTON RICH PADDED CREW WORK SOCK – 3 PACK	100
<b>Y21418</b> 3056 PUFFER VEST	95
<b>Y21480</b> CORE HI VIS H TAPED ALL WEATHER FLEECE VEST	97
<b>Y22301</b> 3056 2 TONE MARLE BEANIE	103
<b>Y22370</b> CORE WORK BEANIE	103
<b>Y22826</b> CORE EMBOSSED LEATHER & BRASS BUCKLE BELT	102
<b>Y22943</b> CORE CAMO SOCK & BEANIE BUNDLE	101
<b>Y22980</b> CORE SHAPED EVA FOAM KNEE PADS	103
<b>Y26455</b> WOMEN'S CORE BAMBOO SOCK – 3 PACK	101
<b>Y26578</b> CORE STRETCH COTTON TRUNKS – 5 PACK	101
<b>Y26791</b> CORE STRETCH WEBBED BELT WITH BOTTLE OPENER BUCKLE	102
<b>Y43245</b> MUSTANG REGULAR FIT STRETCH WORK JEANS - STONEWASH	41
<b>Y43246</b> MUSTANG REGULAR FIT STRETCH WORK JEANS - BLACK	41

STYLE	PAGE
<b>Y43247</b> MUSTANG REGULAR FIT STRETCH WORK JEANS - INDIGO	41
<b>Y43434</b> MUSTANG REGULAR FIT STRETCH WORK JEANS - BLUE/BLACK	41
<b>Y44610</b> CORE STRAIGHT LEG STRETCH JEANS	47
<b>Y60085</b> GRAVEL 150MM (6 INCH) LACE BOOT	117
<b>Y60086</b> GRAVEL 150MM (6 INCH) LACE BOOT	117
<b>Y60087</b> GRIT ELASTIC GUSSET	116
<b>Y60088</b> GRIT ELASTIC GUSSET	116
<b>Y60120</b> UTILITY 130MM (5 INCH) SIDE ZIP BOOT	110
<b>Y60125</b> UTILITY 130MM (5 INCH) SIDE ZIP BOOT	110
<b>Y60174</b> OUTBACK GUSSET PR	114
<b>Y60175</b> OUTBACK GUSSET PR	114
<b>Y60177</b> OUTBACK GUSSET PR	114
<b>Y60178</b> ERP FOOTBED	117
<b>Y60190</b> ICON LACE UP SPORT SAFETY	113
<b>Y60200</b> 3056 130MM (5 INCH) SIDE ZIP BOOT	106
<b>Y60201</b> 3056 130MM (5 INCH) SIDE ZIP BOOT	106
<b>Y60202</b> 3056 130MM (5 INCH) SIDE ZIP BOOT	106
<b>Y60203</b> 3056 130MM (5 INCH) SIDE ZIP BOOT	107
<b>Y60235</b> NITE VISION SIDE ZIP BOOT	110
<b>Y60240</b> WOMEN'S 3056 130MM (5 INCH) SIDE ZIP BOOT	109
<b>Y60245</b> WOMEN'S 3056 130MM (5 INCH) SIDE ZIP BOOT	109
<b>Y60250</b> WOMEN'S 3056 130MM (5 INCH) SIDE ZIP BOOT	109
<b>Y60274</b> 3056 130MM (5 INCH) SIDE ZIP BOOT	107
<b>Y60280</b> ATOMIC 130MM (5 INCH) HYBRID SIDE ZIP BOOT	112
<b>Y60285</b> ATOMIC 130MM (5 INCH) HYBRID SIDE ZIP BOOT	112
<b>Y60359</b> TOUGHMAXX 6Z BOOT	111
<b>Y60360</b> TOUGHMAXX 6Z BOOT	111
<b>Y60363</b> X MID BOOT 130MM HEIGHT	112
<b>Y60364</b> X LOW SHOE	113





**Hard Yakka**

**NOTHING'S TOUGHER**



**Hard Yakka**  
NOTHING'S TOUGHER

**WORKWEAR GROUP**

Level 1, 187 Todd Road, Port Melbourne VIC 3207

ABN 82 004 055 387

Customer Service 1800 720 544

[hardyakka.com.au](http://hardyakka.com.au)

© Hard Yakka 2025 YAK0815