



KingGee

***XTREME* GUARD**



FOOTWEAR RANGE





TABLE OF CONTENTS

2	Introducing XtremeGuard
4	Industries We Serve
6	Innovation In Safety
8	Range Plan
10	Technology
12	APodA
14	ONYX Range
26	BENNU Range
34	Size Guide
35	Compliance



INTRODUCING:



KingGee

XTREME GUARD

The KingGee XtremeGuard Footwear Range is expertly engineered by leading workwear specialists to thrive in the most demanding worksites and environments. This innovative new range sets the benchmark in performance industrial footwear. Featuring 8 styles of boots, each incorporating market-leading technologies and features designed to support dynamic movement, enhance comfort, ensure safety, and mitigate heat.

Advanced Technologies

Each boot is equipped with cutting-edge safety, comfort, and heat mitigation technologies to tackle tough challenges with ease.

Designed for Durability

Built to withstand the harshest terrains and the longest shifts, ensuring peak performance in every task.

Comprehensive Offering

The range offers depth in style, functionality, and includes gender-specific designs to cater to all needs.

Industry Endorsement

Proudly endorsed by the Australian Podiatry Association, making them a trusted choice in the Commercial/Industrial sector.





INDUSTRIES WE SERVE

KingGee's XtremeGuard Range is engineered for a wide spectrum of light and heavy industrial industries, including:

Heavy Industrial:

Aerospace
Shipbuilding
Mining
Electrical, Oil & Gas
Steel Production
Machine Tool Building

Light Industrial:

Construction
Engineering
Light Rail
Manufacturing
Logistics
Agriculture
Forestry &
Landscaping

INNOVATION IN SAFETY

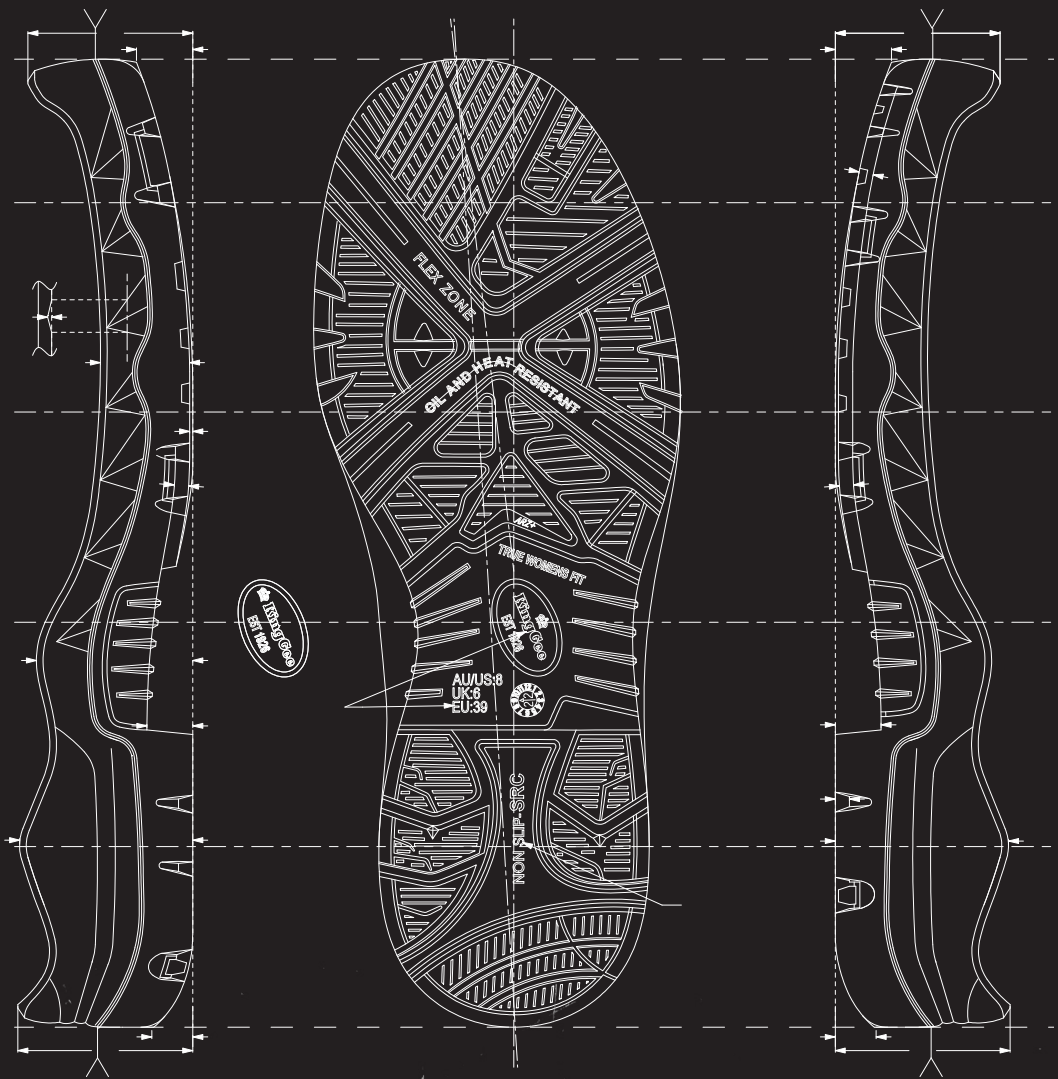
Unparalleled Design and Real Innovation with KingGee XtremeGuard Range: Australia's Most Technically Advanced Industrial Safety Boot Range

At KingGee, our commitment to genuine innovation sets us apart. The KingGee XtremeGuard Footwear Range is the result of meticulous design and cutting-edge engineering, crafted to meet the highest standards of safety and performance. Our in-house team, with a wealth of experience in the industrial footwear sector, begins the design process with a deep understanding of the needs of professionals across both light and heavy industrial sectors. By engaging with industry experts and end-users, we gather insights that drive our innovation, ensuring every boot is built to thrive in the most demanding environments.

The KingGee XtremeGuard Footwear Range incorporates state-of-the-art technologies that set new benchmarks in industrial safety footwear. Each boot features advanced safety components, such as reinforced toe caps, anti-slip soles, and heat-resistant materials, alongside ergonomic designs and breathable fabrics for unparalleled comfort during long shifts. This commitment to integrating advanced technologies results in boots that not only meet but exceed industry standards, delivering exceptional performance under the toughest conditions. The range also includes designs specifically engineered to fit the unique shape of a woman's foot, ensuring unmatched comfort and support.

Innovation at KingGee is not just about following trends; it's about setting them. Our XtremeGuard Footwear Range embodies this philosophy with its pioneering features and unmatched durability. We invest heavily in research and development to bring true innovation to the market, ensuring that our boots provide real, measurable benefits. Proudly endorsed by the Australian Podiatry Association, the XtremeGuard Footwear Range is a trusted choice for professionals seeking the best in industrial safety footwear. With KingGee, you experience true innovation that makes a tangible difference in your daily work life.





FEATURES

MEN'S STYLES



Bennu Pro 9

Bennu Pro 6

Onyx 8Z MET PR

Onyx 6Z PR

Onyx 6CZ EH

	Bennu Pro 9	Bennu Pro 6	Onyx 8Z MET PR	Onyx 6Z PR	Onyx 6CZ EH
Safety Toe	Steel	Steel	Steel	Steel	Composite
Colourways	Black, Wheat	Black, Wheat, Stone	Black, Wheat	Black, Wheat	Black, Wheat
Wellmax® Puncture Protection			✓	✓	
ATX-Grip Outsole	✓	✓	✓	✓	✓
FLEX-TEC Ankle Flex Mechanism	✓	✓	✓	✓	✓
Kevlar® RKT Reflective Thread	✓	✓	✓	✓	✓
D30® Superior Impact Protection	✓	✓	✓	✓	✓
XTKicker Heel Kicker Reinforcement	✓		✓	✓	✓
300°C Rubber Outsole	✓	✓	✓	✓	✓
Anti-Static	✓	✓	✓	✓	
SRC	✓	✓	✓	✓	✓
Poron® XRD™ MetGuard			✓		
Certified to AS 2210.3:2019	✓	✓	✓	✓	✓
International: ASTM F2413-18 EN ISO 20345:2022			✓	✓	
Electrical Hazard Protection (ASTM F2414-18 (EH))					✓
Cordura®	✓	✓	✓	✓	✓
YKK® Zipper	✓	✓	✓	✓	✓

INDUSTRY-LEADING TECHNOLOGY

Built on industry-leading technologies, the KingGee XtremeGuard Range showcases the pinnacle of safety, durability, and comfort in industrial footwear. Designed to excel in the most demanding environments, these boots incorporate cutting-edge features and advanced materials to ensure peak performance and protection. With 8 distinct styles, including gender-specific designs, the XtremeGuard Range is the trusted choice for professionals in mining, construction, and beyond. Explore the entire range and see why KingGee stands at the forefront of industrial safety footwear.

WOMEN'S STYLES



Bennu Pro 6



Onyx 6Z PR



Onyx 6CZ EH

Safety Toe	Steel	Steel	Composite
Colourways	Black, Wheat, Stone	Black, Wheat	Black, Wheat
Wellmax® Puncture Protection		✓	
ATX-Grip Outsole	✓	✓	✓
FLEX-TEC Ankle Flex Mechanism	✓	✓	✓
Kevlar® RKT Reflective Tread	✓	✓	✓
D30® Superior Impact Protection	✓	✓	✓
XTKicker Heel Kicker Reinforcement		✓	✓
300°C Rubber Outsole	✓	✓	✓
Anti-Static	✓	✓	
SRC	✓	✓	✓
Poron® XRD™ MetGuard			
Certified to AS 2210.3:2019	✓	✓	✓
International: ASTM F2413-18 EN ISO 20345:2022		✓	
Electrical Hazard Protection (ASTM F2414-18 (EH))			✓
Cordura®	✓	✓	✓
YKK® Zipper	✓	✓	✓



KINGGEE WOMEN'S BOOTS

Designed and engineered specifically to fit the unique shape of a woman's foot, our KingGee women's last ensures unmatched comfort and support. Unlike many women's shoes that prioritise style over functional fit, our boots are meticulously crafted to address the distinct physiological differences between male and female feet. Women's feet tend to be wider at the forefoot and narrower at the heel, with a higher arch and a more pronounced Q angle, which can lead to overpronation.

The Q angle, or quadriceps angle, refers to the angle at which the quadriceps muscle meets the patella (kneecap). This angle is typically larger in women due to wider hips, influencing the alignment and biomechanics of the lower body, including the feet. Our design accommodates these differences by providing a secure fit that prevents heel slippage, pinched toes, and arch pain.

KingGee boots are crafted to support the biomechanics of the female foot, reducing foot fatigue and ensuring all-day wearability. With a focus on eliminating common issues like heel slippage, pinched toes, arch pain, and foot fatigue, the result is a shoe that fits like it was made just for you – because it essentially was.

TECHNOLOGY

XtremeGuard is our most technical boot to date. Packed with the latest technology in safety and compliance, this range is built on industry-leading advancements to meet the rigorous demands of today's toughest environments. From enhanced comfort to superior durability, each boot in the XtremeGuard Range is meticulously designed to provide unparalleled support and protection.

CORDURA
BRAND
F A B R I C

Comfort Collar

D3O

Lateral Impact Protection



FLEX-TEC

FLEX-TEC ankle flex mechanism

XTKicker

XTKicker heel reinforcement
[Bennu Pro 9, Onyx 8Z MET PR, 6Z PR, 6CZ EH]



Anatomical Rebound Zone heel cushioning system



TriTec innersole foot comfort system



ShockGuard Pro shock dispersion & energy rebound



Puncture Protection
[Onyx 8Z MET PR, 6Z PR]

ATX-GRIP

All Terrain Grip & Traction

DuPont™
KEVLAR
FIBRE RKT

Kevlar Fibre
Reflective Thread



Metatarsal Guard Technology
[Onyx 8Z MET PR]



K-Shield Composite Toe [Onyx 6CZ EH] and K-Guard Steel Toe [Bennu Pro 9, Pro 6, Onyx 8Z MET PR, 6Z PR]





K-Guard

Steel Toe Cap – this is designed to withstand an impact force of 200 joules from a 20kg striker drop and compression force of 15kN (1.5 tons). Tested under the AS 2210.3:2019 standard.



K-Shield

Composite Safety Cap – this provides the same level of protection as steel caps, tested under the AS 2210.3:2019 standard for 200 joules impact and 1.5-ton compression. They are non-conductive and up to 30% lighter than steel caps.



FLEX-TEC

This unique biomechanical mechanism allows extra flexion at the ankle, improving fit, comfort, and support.



TriTec

Innersole Foot Comfort System, comprising a PU supportive shell, memory foam interior, and a Poron® heel pod for long-lasting comfort.



ShockGuard Pro

Shock dispersion and energy rebound PU midsole. Ensures your foot is protected, stable, and comfortable.



ATX-Grip

All-terrain rubber outsole providing traction and 300°C heat resistance. Tested to the highest SRC AS 2210.3:2019 outsole slip rating.



ARZ+®

Anatomical Rebound Zone (ARZ+) with an expandable polymer in the midsole, providing excellent cushioning and rebound. Particularly effective at the heel strike, the soft, contouring material dissipates force upon impact.



XTKicker

This unique heel lever innovation provides reinforcement to high-abrasion areas and assists in easily removing boots.



D30®

D30® construction provides world class shock absorbing impact lateral & medial ankle protection.



Kevlar® RKT

DuPont™ Kevlar® aramid fibre is used due it being lightweight, heat resistant and extraordinarily strong, with 5 times the strength of steel on an equal-weight basis. It is about 2.5 times stronger than nylon and polyester, has almost no stretch, does not melt, and decomposes at 800°F.



Cordura®

Cordura® Fabric to help provide extra protection and durability where it's needed most – resisting abrasion, tear and stress to give support and strength while still being breathable.



Wellmax®

WELLMAX® anti-penetration is a non-metallic, flexible plate Tested and compliant with EN ISO 20345, EN12568 and CSA Z195-02 Standards. The high tech ceramic coated fibres offer greater comfort, lightness, thermal insulating properties and flexibility compared to steel plates.

APODA

APODA STANDS FOR THE AUSTRALIAN PODIATRY ASSOCIATION.

APodA Exclusively Endorses KingGee Safety Footwear

The Australian Podiatry Association (APodA) is the largest and oldest peak body representing podiatry and promoting foot health in Australia. As the leading provider of quality continuing education for podiatrists, APodA supports ongoing professional development while maintaining and upholding industry standards. In partnership with KingGee, APodA is committed to advancing podiatry and improving foot health in the community.

Seeing A Podiatrist

Podiatric care positively impacts the lives of one in five Australians suffering from foot pain. Podiatrists, as foot health experts, understand the structure and movement of your feet and lower limbs. They can assess, diagnose, and treat pain in the foot, ankle, knee, leg, or hip. Given that your feet house a quarter of the bones in your body, podiatrists are best placed to help you stay active and pain-free.

What Does It Take To Get Endorsed By The APodA?

To receive APodA endorsement, KingGee safety footwear undergoes a rigorous product assessment process and must meet strict requirements. The footwear is evaluated by a panel of six independent AHPRA-registered podiatrists who have a minimum of five years' clinical practice experience. Endorsed products must:

- Promote foot health
- Fulfil their stated claims
- Serve a beneficial purpose for the podiatry profession

By endorsing KingGee safety footwear, APodA supports podiatrists in providing high-quality foot care to their patients.

Orthotics

All of our safety KingGee footwear styles include removable footbeds. These can be removed to fit some orthotics, but due to strict safety standards, they must be comparable in thickness to the KingGee footbed found in the boot. Please consult your local podiatrist for further fitting advice.







N

8Z MET PR



Y



6Z PR

**WOMEN'S
AVAILABLE**



X



6CZ EH

**WOMEN'S
AVAILABLE**





ONYX 8Z MET PR



BLACK - K27996

AU/UK 3-16 (HALF SIZES 7.5-11.5)



WHEAT - K27997

AU/UK 3-16 (HALF SIZES 7.5-11.5)

Experience superior protection and comfort with the ONYX 8Z MET PR Work Boot. Featuring a FLEX-TEC ankle flex mechanism and top-rated slip resistance, it's perfect for heavy industry, mining, electrical, oil and gas. The Poron®XRD™ Metatarsal Guard shields your foot from falling hazards, while WELLMAX® Puncture Protection ensures safety from sharp objects. The anatomical rebound zone enhances comfort during long shifts.

Standards:

Certified to AS 2210.3:2019
International: ASTM F2413-18
EN ISO 20345:2022



CORDURA
BRAND
F A B R I C

D3O



ONYX 8Z MET PR

FEATURES:

- K-Guard - Steel Toe Protection
- Poron®XRD™ Metatarsal Guard Technology
- Kevlar® RKT - Reflective Kevlar Thread
- FLEX-TEC - Ankle Flex Mechanism
- YKK® 10 Gauge Zipper
- CORDURA® Comfort Collar
- D3O® Lateral Impact Protection
- XTKicker - Heel Kicker Reinforcement
- TriTec - Innersole Foot Comfort System
- ShockGuard Pro - Shock Dispersion and Energy Rebound PU Midsole
- WELLMAX® Puncture Protection
- ATX-Grip - 300° HRO All Terrain Grip and Traction SRC Rubber Outsole



ONYX 6Z PR



BLACK - K27998

AU/UK 3-16 (HALF SIZES 7.5-11.5)



WHEAT - K27999

AU/UK 3-16 (HALF SIZES 7.5-11.5)

Designed for ultimate safety, the ONYX 6Z PR Work Boot features a FLEX-TEC mechanism and Kevlar reflective thread for night-time visibility. Perfect for heavy industry, construction, mining, and oil work, it also includes WELLMAX® Puncture Protection for added protection against sharps. Additionally, the XTKicker ensures added durability and easy on/off functionality.

Standards:

Certified to AS 2210.3:2019
International: ASTM F2413-18
EN ISO 20345:2022



CORDURA
BRAND
F A B R I C

D3O





FEATURES:

- K-Guard - Steel Toe Protection
- Kevlar® RKT - Reflective Kevlar Thread
- FLEX-TEC - Ankle Flex Mechanism
- YKK® 10 Gauge Zipper
- CORDURA® Comfort Collar
- D3O® Lateral Impact Protection
- XTKicker - Heel Kicker Reinforcement
- TriTec - Innersole Foot Comfort System
- ShockGuard Pro - Shock Dispersion and Energy Rebound PU Midsole
- WELLMAX® Puncture Protection
- ATX-Grip - 300° HRO All Terrain Grip and Traction SRC Rubber Outsole



ONYX 6CZ EH



BLACK - K28000

AU/UK 3-16 (HALF SIZES 7.5-11.5)



WHEAT - K28001

AU/UK 3-16 (HALF SIZES 7.5-11.5)

The ONYX 6CZ EH Work Boot offers superior safety with its FLEX-TEC mechanism, slip-resistant outsole, and Kevlar® reflective thread for night-time visibility. Perfect for heavy industry, mining, electrical, oil and gas sectors, this boot is engineered for maximum comfort and protection. Designed with an Anatomical Rebound Zone (ARZ+) for enhanced long-term comfort.

Standards:

Certified to AS 2210.3:2019
ASTM F2414-18 (EH)



CORDURA
BRAND
F A B R I C

D30



FEATURES:

- K-Shield - Composite Toe Protection
- Kevlar® RKT - Reflective Kevlar Thread
- FLEX-TEC - Ankle Flex Mechanism
- YKK® 10 Gauge Zipper
- CORDURA® Comfort Collar
- D3O® Lateral Impact Protection
- XTKicker - Heel Kicker Reinforcement
- TriTec - Innersole Foot Comfort System
- ShockGuard Pro - Shock Dispersion and Energy Rebound PU Midsole
- ATX-Grip - 300° HRO All Terrain Grip and Traction SRC Rubber Outsole



ONYX 6Z PR WOMEN'S



BLACK - K28002

AU/US 4-11 (HALF SIZES 5.5-10.5)



WHEAT - K28003

AU/US 4-11 (HALF SIZES 5.5-10.5)

Designed for the female foot, the ONYX 6Z PR Work Boot combines safety and comfort with its unique womens specific midsole and FLEX-TEC mechanism. Perfect for heavy industrial, construction, and mining jobs, it features WELLMAX® Puncture Protection to ensure safety from sharp objects on-site. This boot also features an Anatomical Rebound Zone (ARZ+) for enhanced comfort during long shifts.

Standards:

Certified to AS 2210.3:2019
International: ASTM F2413-18
EN ISO 20345:2022



CORDURA
BRAND
F A B R I C

D3O



ONYX 6Z PR WOMEN'S

FEATURES:

- Women's specific construction & mold for superior fit, design and sizing
- K-Guard - Steel Toe Protection
- Kevlar® RKT - Reflective Kevlar Thread
- FLEX-TEC - Ankle Flex Mechanism
- YKK® 10 Gauge Zipper
- CORDURA® Comfort Collar
- D3O® Lateral Impact Protection
- XTKicker - Heel Kicker Reinforcement
- TriTec - Innersole Foot Comfort System
- ShockGuard Pro - Shock Dispersion and Energy Rebound PU Midsole
- WELLMAX® Puncture Protection
- ATX-Grip - 300° HRO All Terrain Grip and Traction SRC Rubber Outsole



ONYX 6CZ EH WOMEN'S



BLACK - K28004

AU/US 4-11 (HALF SIZES 5.5-10.5)



WHEAT - K28005

AU/US 4-11 (HALF SIZES 5.5-10.5)

Step into the womens specific ONYX 6CZ EH Work Boot for tailored comfort and safety. With its unique women's midsole design, it's perfect for heavy industry, construction, and mining. The FLEX-TEC Ankle Flex Mechanism ensures optimal movement, while the heat-resistant and highest slip rating outsole provides additional safety. Enhanced with an anatomical rebound zone for long-lasting comfort during extended shifts.

Standards:

Certified to AS 2210.3:2019
ASTM F2414-18 (EH)



CORDURA
BRAND
F A B R I C

D30

benchmark
PRODUCT CERTIFICATION

ONYX 6CZ EH WOMEN'S



FEATURES:

- Women's specific construction & mold for superior fit, design and sizing
- K-Shield - Composite Toe Protection
- Kevlar® RKT - Reflective Kevlar Thread
- FLEX-TEC - Ankle Flex Mechanism
- YKK® 10 Gauge Zipper
- CORDURA® Comfort Collar
- D3O® Lateral Impact Protection
- XTKicker - Heel Kicker Reinforcement
- TriTec - Innersole Foot Comfort System
- ShockGuard Pro - Shock Dispersion and Energy Rebound PU Midsole
- ATX-Grip - 300° HRO All Terrain Grip and Traction SRC Rubber Outsole

BEN



PRO 9

NU



PRO 6

**WOMEN'S
AVAILABLE**





BENNU PRO 9



BLACK - K28006

AU/UK 3-16 (HALF SIZES 7.5-11.5)



WHEAT - K28007

AU/UK 3-16 (HALF SIZES 7.5-11.5)

The BENNU PRO 9 Work Boot combines advanced safety features with unmatched comfort, ensuring it lives up to the PRO name. Ideal for heavy industrial and mining environments, it offers a biomechanically engineered FLEX-TEC mechanism and the ATX-Grip, the highest slip rating and heat-resistant outsole. The PRO designation highlights the XTKicker Heel Kicker Reinforcement for durability in high-wear areas.

Standards:
Certified to AS 2210.3:2019



CORDURA
F A B R I C

D30

benchmark
PRODUCT CERTIFICATION



FEATURES:

- K-Guard - Steel Toe Protection
- Kevlar® RKT - Reflective Kevlar Thread
- Hinged lace pocket compartment for keeping lace ends secure
- FLEX-TEC - Ankle Flex Mechanism
- YKK® 10 Gauge Zipper
- CORDURA® Comfort Collar
- D3O® Lateral Impact Protection
- XTKicker - Heel Kicker Reinforcement
- TriTec - Innersole Foot Comfort System
- ShockGuard Pro - Shock Dispersion and Energy Rebound PU Midsole
- ATX-Grip - 300° HRO All Terrain Grip and Traction SRC Rubber Outsole



BENNU PRO 6



BLACK - K28008

AU/UK 3-16 (HALF SIZES 7.5-11.5)



WHEAT - K28009

AU/UK 3-16 (HALF SIZES 7.5-11.5)



STONE - K28010

AU/UK 3-16 (HALF SIZES 7.5-11.5)



CORDURA
BRAND
F A B R I C

D30





The BENNU PRO 6 Work Boot offers top-notch protection and flexibility with its advanced FLEX-TEC ankle flex mechanism. Perfect for heavy industrial and construction jobs, it ensures safety and comfort. The PRO-grade hinged lace pocket compartment keeps lace ends secure and out of the way. Additionally, the unique magnet zip stay ensures the zip self-locks, eliminating the need for velcro.

Standards:

Certified to AS 2210.3:2019

FEATURES:

- K-Guard - Steel Toe Protection
- Kevlar® RKT - Reflective Kevlar Thread
- Hinged lace pocket compartment for keeping lace ends secure
- FLEX-TEC - Ankle Flex Mechanism
- YKK® 10 Gauge Zipper
- Magnet Zip Lock: a self-locking zip stay that eliminates the need of velcro
- CORDURA® Comfort Collar
- D3O® Lateral Impact Protection
- TriTec - Innersole Foot Comfort System
- ShockGuard Pro - Shock Dispersion and Energy Rebound PU Midsole
- ATX-Grip - 300° HRO All Terrain Grip and Traction SRC Rubber Outsole



BENNU PRO 6 WOMEN'S



BLACK - K28011
AU/US 4-11 (HALF SIZES 5.5-10.5)



WHEAT - K28012
AU/US 4-11 (HALF SIZES 5.5-10.5)



STONE - K28013
AU/US 4-11 (HALF SIZES 5.5-10.5)



CORDURA
BRAND
F A B R I C

D30



BENNU PRO 6 WOMEN'S

The BENNU PRO 6 Work Boot provides a women-specific fit and unique midsole design for superior safety and comfort, living up to its PRO designation. Ideal for heavy industrial and construction work. The PRO-level hinged lace pocket compartment keeps lace ends secure and out of the way. Additionally, the unique magnet zip stay ensures the zip self-locks, eliminating the need for velcro.

Standards:

Certified to AS 2210.3:2019

FEATURES:

- Women's specific construction & mold for superior fit, design and sizing
- K-Guard - Steel Toe Protection
- Kevlar® RKT - Reflective Kevlar Thread
- Hinged lace pocket compartment for keeping lace ends secure
- FLEX-TEC - Ankle Flex Mechanism
- YKK® 10 Gauge Zipper
- CORDURA® Comfort Collar
- D3O® Lateral Impact Protection
- TriTec - Innersole Foot Comfort System
- ShockGuard Pro - Shock Dispersion and Energy Rebound PU Midsole
- ATX-Grip - 300° HRO All Terrain Grip and Traction SRC Rubber Outsole

SIZE GUIDE

HOW TO WORK OUT YOUR SHOE SIZE

MEN'S EEE fit

AUS/UK	3	4	5	5.5	6	6.5	7	7.5	8	8.5	9	9.5	10	10.5	11	11.5	12	13	14	15	16
USA	4	5	6	6.5	7	7.5	8	8.5	9	9.5	10	10.5	11	11.5	12	12.5	13	14	15	16	17
European	37	38	39	39.5	40	40.5	41	41.5	42	42.5	43	43.5	44	44.5	45	45.5	46	47	48	49	50

WOMEN'S

AUS/USA	4	5	5.5	6	6.5	7	7.5	8	8.5	9	9.5	10	10.5	11
UK	2	3	3.5	4	4.6	5	5.5	6	6.5	7	7.5	8	8.5	9
European	35	36	36.5	37	37.5	38	38.5	39	39.5	40	40.5	41	41.5	42



COMPLIANCE

BOOT SAFETY STANDARDS

Australian Safety Standard AS 2210.3:2019

Every safety boot sold in Australia has to pass the latest Australia Standards for protective footwear (currently AS 2210.3:2019).

Each style must be tested by an independent and authorised laboratory and then certified by a worldwide recognised organisation where each component of the boot is tested (fabric, sole, thread, lining, etc).

Bonding Test

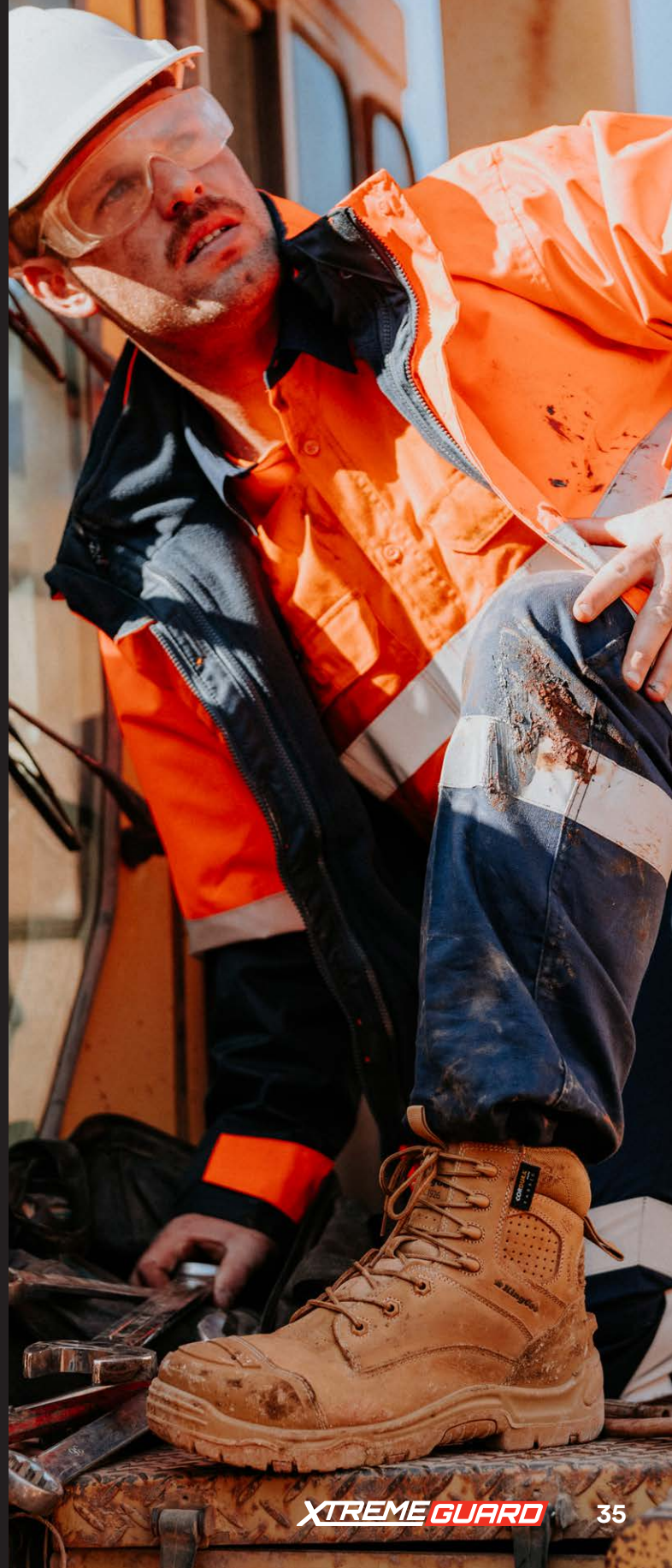
Measures the force required to separate the upper from the sole unit or to separate different layers within the sole unit, i.e. separate midsole from outsole. Material tearing is part of the assessment when the force required to tear the material itself apart is lower than the bonding strength between two different materials and also lower than the bonding requirement then material failure will occur.

Compression Test

This test measures the resistance of a toe cap being compressed by an upper plate with a pressing force 15kN = 1.5ton. The clearance between the toes and the toe cap must be over 12.5mm or 15mm depending on sizes.

Impact Test

Each toe cap has to pass the impact resistance test explained in the standard AS 2210.3:2019. After the drop of a 20kg striker with a force of 200J, the clearance between your toes and the toe cap must be between 12.5mm to 15mm depending on sizes.









KingGee

Workwear Group

Level 1, 187 Todd Road
Port Melbourne VIC 3207

ABN 82 004 055 387

Customer Service 1800 720 544

KingGee.com.au

© KingGee 2024 KG0696