

**NEW**  
mod*RIDE*  
**MIDSOLE**  
**TECHNOLOGY**

**MACK<sup>®</sup>**  
**TORQUE**  
**RANGE**



# COMFORT & SUPPORT IN ALL THE RIGHT PLACES

The range performs well on **BOTH ROUGH AND FLAT TERRAINS** and the fitting profile also suits those with wider feet.



The **TORQUE** range is designed for workers requiring comfort and versatility in their safety footwear. The boots combine a unique PU cushioned midsole, TPU outsole, premium full grain leather and an integrated ScuffCAP for durability.

Premium grade full grain leather upper for softness and durability

Integrated bumper cap for longevity & ensures site compliance for longer



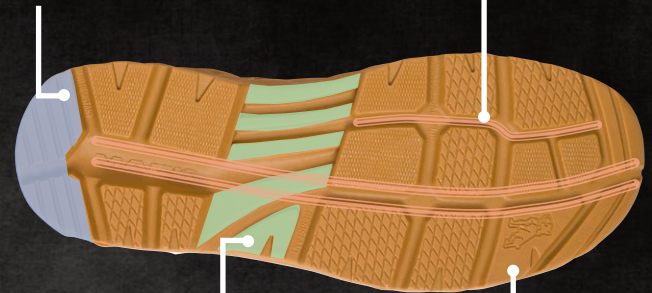
STEEL Toecap (except Mack Cruise)

Soft, yet structured ankle collar provides more comfort and support

New technology modRIDE midsole modulates cushioning & stability

asymBEVEL heel to match natural heel strike while walking to provide a smoother ride

decoupleGROOVE provides flexibility and improves rough terrain adaptation



ADAPTruss design provides midfoot support & stability

Slip resistant sole

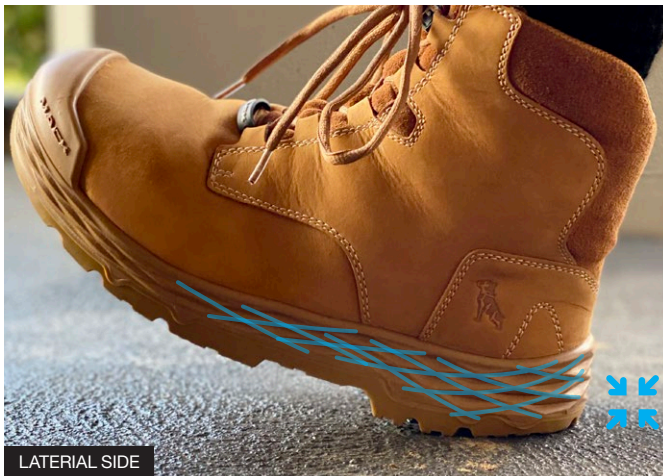
## FEATURES GUIDE

### NEW modRIDE MIDSOLE TECHNOLOGY

The unique midsole technology platform of the modRIDE is designed to provide a modulated ride from heel strike to toe off. The sole geometry is engineered to provide reduced resistance to compression in zones that need cushioning and increased resistance in zones where additional stability is desired.

**BASED ON RUNNING SHOE TECHNOLOGY**  
For all day comfort, durability and fatigue reduction

**NEW**  
modRIDE  
MIDSOLE  
TECHNOLOGY



Compression waffle zone for cushioning at heel strike.

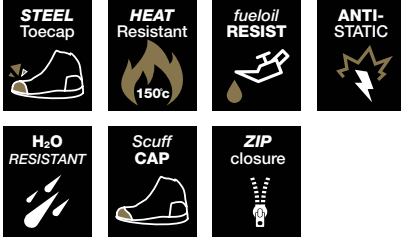


Stability waffle zone, added stiffness for a supportive walking gate.

## FORCE ZIP

The easy access ZIP closure of the FORCE ZIP makes it ideal for workers exposed to sparks, working around water or required to remove their boots multiple times a day. The ScuffCAP improves durability to ensure that the boots comply with standards for as long as possible.

### SAFETY FEATURES



### MKOFORCEZ

**SIZES**  
4-13  
1/2 SIZES 6.5-10.5  
**HEIGHT**  
162<sup>mm</sup>  
**WEIGHT**  
815<sup>g</sup>

### COLOURS



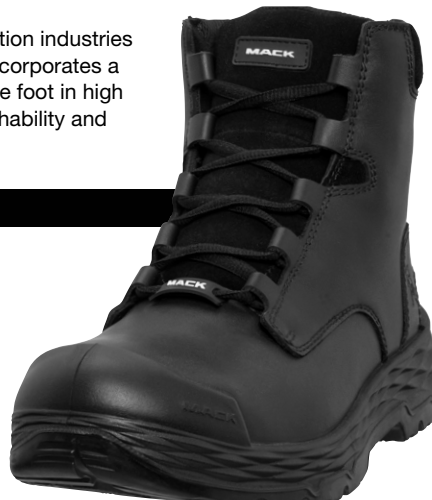
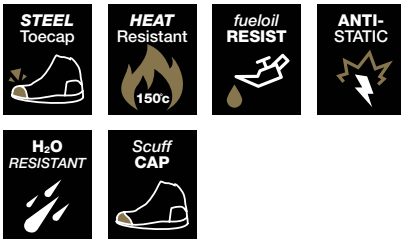
**OUTSOLE:** TPU **TOECAP:** Steel **UPPER:** Premium Full Grain Leather (Black), Premium Nubuck Leather (Honey)

**APPROVED STANDARDS** • AS/NZS 2210.3 (Class I S1 SRA) • EN - ISO 20345: 2011 (S1 SRA) • ASTM F2413 - 18 (M/I/75/C/75/SD)

## FORCE

Ideal for workers in the resources and construction industries that spend all day in their boots. The FORCE incorporates a cushioned PU midsole and insole and wraps the foot in high grade full grain leather upper for comfort, breathability and durability. The ScuffCAP improves durability.

### SAFETY FEATURES



### MK00FORCE

**SIZES**  
4-13  
1/2 SIZES 6.5-10.5  
**HEIGHT**  
162<sup>mm</sup>  
**WEIGHT**  
775<sup>g</sup>

### COLOURS



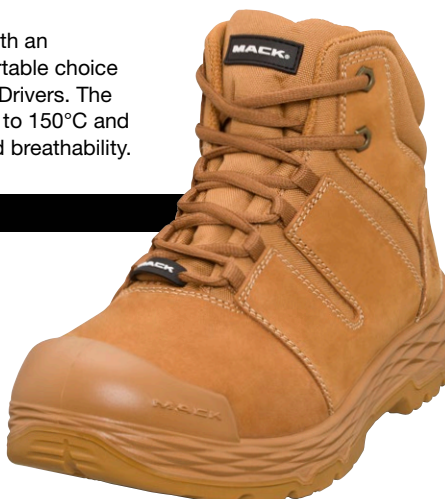
**OUTSOLE:** TPU **TOECAP:** Steel **UPPER:** Premium Full Grain Leather (Black), Premium Nubuck Leather (Honey)

**APPROVED STANDARDS** • AS/NZS 2210.3 (Class I S1 SRA) • EN - ISO 20345: 2011 (S1 SRA) • ASTM F2413 - 18 (M/I/75/C/75/SD)

## SHIFT ZIP

SHIFT ZIP is a low-cut hiker style ankle boot with an industrial grade zipper. A popular 100% comfortable choice for Warehouse Staff, Construction and Courier Drivers. The boot also features a heat resistant TPU outsole to 150°C and features ballistic nylon in the upper for improved breathability.

### SAFETY FEATURES



### MKOSHIFTZ

**SIZES**  
4-13  
1/2 SIZES 6.5-10.5  
**HEIGHT**  
145<sup>mm</sup>  
**WEIGHT**  
635<sup>g</sup>

### COLOURS



**OUTSOLE:** TPU **TOECAP:** Steel **UPPER:** Premium Nubuck Leather (Honey) / Ballistic Nylon

**APPROVED STANDARDS** • AS/NZS 2210.3 (Class I S1 SRA) • EN - ISO 20345: 2011 (S1 SRA) • ASTM F2413 - 18 (M/I/75/C/75/SD)

# HUB

Classic slip-on double gusseted boot with a ScuffCAP to improve durability, making the HUB ideal for workers that have to kneel as part of their work routine. Suitable for plumbers, electricians, mechanics and workers that complete work in hard to reach places.

## SAFETY FEATURES

<b>STEEL Toecap</b> 	<b>HEAT Resistant</b> 150c 	<b>fuel/oil RESIST</b> 	<b>ANTI-STATIC</b> 
<b>H<sub>2</sub>O RESISTANT</b> 	<b>Scuff CAP</b> 		



MK0000HUB

**SIZES**  
4-13  
1/2 SIZES 6.5-10.5  
**HEIGHT**  
132<sup>mm</sup>  
**WEIGHT**  
623<sup>g</sup>

**COLOURS**

CLARET



**OUTSOLE:** TPU **TOECAP:** Steel **UPPER:** Premium Full Grain Leather (Claret)

**APPROVED STANDARDS** • AS/NZS 2210.3 (Class I S1 SRA) • EN - ISO 20345: 2011 (S1 SRA) • ASTM F2413 - 18 (M/I/75/C/75/SD)

# CRUISE

A stylish, comfortable slip-on double gusset boot that is ideal for work on the farm, garden or other non-safety work environments.

NON SAFETY BOOT

## SAFETY FEATURES

<b>HEAT Resistant</b> 150c 	<b>fuel/oil RESIST</b> 	<b>ANTI-STATIC</b> 
<b>H<sub>2</sub>O RESISTANT</b> 	<b>Scuff CAP</b> 	<b>PUMidsole</b>
		<b>PUInnersole</b>



MK0CRUISE

**SIZES**  
4-13  
1/2 SIZES 6.5-10.5  
**HEIGHT**  
150<sup>mm</sup>  
**WEIGHT**  
590<sup>g</sup>

**COLOURS**

CLARET



**OUTSOLE:** TPU **UPPER:** Premium Full Grain Leather (Claret)

**APPROVED STANDARDS** • AS/NZS 2210.3 (Class I O1 SRA) • EN - ISO 20347: 2012 (O1 SRA) • ASTM F2913 - 18 (SD)

**DESIGNED  
TO ENDURE.  
MADE TO  
MOVE.  
WORN TO  
PERFORM.**



**MACKBOOTS.COM.AU | 1300 350 216**

Distributed by

Mack Footwear is sold under licence from Mack Trucks, Inc. All rights reserved. \*Weight disclaimer: Footwear weights are based on a men's UK8 for a single shoe or boot and a ladies USA10 for ladies shoes. Due to the nature of manufacturing there will be subtle variation between pairs. Disclaimer: Every reasonable effort has been made to ensure the accuracy of the product information in this document. This document must not be regarded as an infallible guide. Mack Boots™ accepts no responsibility in this regard. As product details may change from time to time please contact Mack Boots™ to gain the latest information.